

Policy Briefing

Neighbourhood deprivation in 2009 (November 2009)

The Administration Services Central Research Unit has been given the remit of reviewing and scanning the environment that the council operates within. As part of this process, the Unit produces Policy Briefings on issues relating to the interests of the council and the social, economic and policy environment in which it operates.

These reports may also be incorporated into the wider community planning process in South Lanarkshire.

They are not intended to be for information only, but are intended to provide background information on a topic of relevance to the Council with a focus on analysing and, where relevant, identifying issues arising from this work.

Their aim is to: -

- Promote consideration of issues arising out of an analysis of key statistics and trends;
- Reflect on the issues and direction of emerging UK Government and Scottish Government policies; and
- Deepen the council's understanding and knowledge of issues.

This particular Policy Briefing looks at the results from Scottish Government research into Deprivation in Scotland at both council and Datazone level.

Poverty is now more often defined as individuals, families or groups not having enough financial resources to meet their needs, whilst **Deprivation** refers to unmet demand, which is caused by a lack of resources of all kinds, not just financial (diet, social conditions, etc.) At the area level, it is very difficult to measure the proportion of the population experiencing deprivation of more than one kind. It is easier to look at a single form of deprivation at an area level and this has been the approach adopted by the Scottish Government, analysing deprivation in a number of "domains" or dimensions of deprivation. Multiple deprivation is measured by combining the scores an area has on individual domains to generate an aggregate Index of Multiple Deprivation.

The Scottish Government has recently published the results of the exercise undertaken to produce a **Scottish Index of Multiple Deprivation (SIMD)** for 2009. This seeks to measure relative deprivation at a Datazone and council level and identifies areas of multiple deprivation as well as those with specific forms of deprivation (Income, Employment, Health & Disability, Education, Skills & Training, Housing, Access to Services and Crime). This revises and updates the work undertaken to produce a SIMD for 2004 and for 2006.

The Index is used in the development of the long term strategy to tackle deprivation and inform the fight against poverty. The Scottish Government recognises that the datazones identified by this SIMD as being the most deprived need the most help and will target expenditure to these areas.

Most of the indicators used in the report come from administrative sources, which means that they can be affected by both changes in the way schemes are

administered as well as the impacts of campaigns – such as welfare rights campaigns on benefit take up. There are 38 indicators used in the SIMD 2009. For Employment, Income and Access deprivation, the indicator data is mainly for 2008, for Crime 2007-08, for Health and Education two or three year averages up to 2007 or 2008. The indicators in the Housing domain are from the 2001 Census and have remained the same for each SIMD produced to date. What this does mean is that much of the data predates the full impact of the recession that South Lanarkshire is now experiencing. Appendix 1 shows all the individual indicators under each domain and the date of the data used to compile the SIMD2009.

To derive the Overall deprivation ranking, the results under each of the domains are weighted – Income and Employment deprivation each account for 28% of the overall “score”, Health and Education for 14% respectively, Access to services for 9%, Crime for 5% and Housing for 2%.

Datazones

With the 2004 Scottish Index of Multiple Deprivation a new geographical unit was created – the Datazone.

Datazones are aggregations of 2001 Census Output Areas and have an average population of around 750 people. The Datazones aim to be relatively homogeneous in terms of their socio-economic characteristics and to be relatively compact geographical areas in terms of their shape. Datazones have also been constrained so that they do not cross council boundaries but ‘nest’ within them.

In Scotland as a whole 6,505 Datazones have been identified - with 398 of them (6.1%) being in South Lanarkshire. The largest number of datazones is in Hamilton – 131 or nearly a third of the South Lanarkshire total. East Kilbride has 116 zones, 29% of the South Lanarkshire total and Clydesdale has 80 – just over a fifth of the total. The smallest number of datazones is in Rutherglen-Cambuslang, with 71 - 18% of the South Lanarkshire total.

For further information on this subject contact: -

| | | |
|-------------|-----------|--|
| Alex Morton | ext. 3829 | alex.morton@southlanarkshire.gov.uk |
| Helen Rae | ext. 3831 | helen.rae@southlanarkshire.gov.uk |

SUMMARY

The SIMD 2009 – with the most recent information in it relating to 2008 – shows that of the 398 datazones in South Lanarkshire, 52 datazones in the most deprived datazones in Scotland – 5.3% of the Scottish total and representing 13.1% of all South Lanarkshire datazones. South Lanarkshire had the 5th largest number of areas in the worst 15% in Scotland. At 13.1% of its datazones in the most deprived 15%, South Lanarkshire had the 10th largest proportion of all Scottish council areas.

There were 11 datazones in the most deprived 5% areas in Scotland – 3.4% of the Scottish total. This means that 2.8% of South Lanarkshire's datazones are in the most deprived 5% of areas in Scotland. South Lanarkshire had the 7th largest number of all the datazones in the worst 5% in Scotland.

Across the seven domains, the largest number of South Lanarkshire datazones in the worst 15% in Scotland were in the Education, Skills & Training domain, with 63. There were 57 datazones in the worst 15% in Scotland for Employment deprivation and 50 in the most deprived 15% for both income deprivation and Health deprivation. South Lanarkshire had only 29 of its datazones in the most deprived 15% in Scotland for Housing deprivation.

In the SIMD2009, South Lanarkshire had 26 datazones in the most deprived 5% of areas in Scotland for Education, Skills & Training deprivation and 13 for Crime deprivation but only one for Housing deprivation.

In relation to Employment deprivation, a total of 24,435 people of working age were identified as being Employment deprived in South Lanarkshire – the 5th largest number of all Scottish council areas and accounting for 6.2% of the Scottish total. Overall, 13% of the working age population in South Lanarkshire were identified as being Employment deprived – above the Scottish average of 12% and the 9th highest rate in Scotland.

The SIMD2009 also identified 51,950 people who were Income deprived – 5.9% of the Scottish total and the 5th largest number in all Scottish council areas. Overall, 16.8% of the total population of South Lanarkshire were identified as being income deprived, just below the Scottish average of 17.1% and the 10th highest Income deprivation rate in Scotland.

In respect of Employment deprivation it is possible to compare the results from the SIMD2009 with those for the SIMD2006. This shows a decline of 1,835 in South Lanarkshire, or 7%. This was a greater percentage decline than in Scotland as a whole of 5% and was the 9th largest decline. Only four council areas experienced an increase.

An analysis has been undertaken to update these figures to take account of the effect of the recession. This indicates that since the SIMD2009 was produced, Employment deprivation has risen by 11% compared to a 7% rise in Scotland as a whole.

The analysis shows that 267 of 398 datazones in South Lanarkshire saw their ranking worsen and South Lanarkshire has 5 more datazones in the 5% most employment deprived areas and 4 more in the worst 15% of areas in Scotland. It also shows 8 less in the 15% least deprived areas in Scotland.

Out of the 6,505 datazones in Scotland in the SIMD2009, the most deprived area of South Lanarkshire was Whitlawburn North. It was ranked the 46th most deprived area in Scotland. The next most deprived areas were Rutherglen West (89th most deprived area in Scotland), Whitlawburn South (139th worst), High Blantyre North East (187th worst) and Fairhill North East at 189th worst.

The least deprived datazone in South Lanarkshire was Cambuslang North, ranked 104th "least deprived" in Scotland. Next came Strathaven East, ranked 125th least deprived, followed by, Uddingston West 128th least deprived in Scotland, Lanark West 173rd and Strathaven North East, 181st least deprived in Scotland.

Comparing the SIMD2009 with the SIMD2006 shows that one datazone – West Mains Central in East Kilbride – has seen no change in its ranking in Scotland (the 3,823rd most deprived datazone in Scotland). Of the remaining South Lanarkshire datazones, 172 datazones have seen their rankings get worse and 225 have seen their rankings improve.

South Lanarkshire now has 11 areas in the 5% most deprived areas in Scotland. In the SIMD2006 it had 13 areas. One area has moved in – Wellhall North – the 300th most deprived area in Scotland – and three have moved out of the most deprived 5% of areas in Scotland, although they remain in the most deprived 15% – Fernhill Central, Whitehill North and Burnbank South.

Four South Lanarkshire areas have entered the worst 15% in Scotland – Smyllum Park and Kirkmuirhill South – which were both in the most deprived 15% of areas in the SIMD2004 – and two areas "new" to the most deprived 15% of areas – Douglas Central and Eddlewood North.

Ten South Lanarkshire areas have fallen out of the most deprived 15% of areas in Scotland between the SIMD2006 and SIMD2009. Of these ten areas, all but three had been ranked in the most deprived 15% of areas in Scotland in both the SIMD2004 and SIMD2006. Forth North, Blantyre Central and Meikle Earnock West had been outwith the most deprived 15% of areas in the SIMD2004.

Thirteen South Lanarkshire datazones rose up the list of most deprived areas by over 500 places and 106 by over 100 to 499 places. At the other end, one datazone improved its ranking by over 1,000 places. This was Torheads where a significant amount of new housing has been built since the SIMD2006 was produced. A further 22 improved their rankings by over 500 to 999 places and 156 by between 100-499 places.

Council Level deprivation

The Scottish Government acknowledges that council areas vary in population size and are likely to include pockets of both deprivation and affluence. Similarly, in some council areas deprivation may be more evenly spread than in others, where it may be more concentrated.

In terms of the overall analysis of the results of the 2009 Scottish Index of Multiple Deprivation, South Lanarkshire had 11 zones in the worst 5%, 32 in the worst 10%, 52 in the worst 15% and 77 zones in the worst 20% of zones in Scotland. It also had 50 datazones in the least deprived 15% in Scotland and 8 in the least deprived 5% in Scotland.

Table 1 shows the number of zones in each category and South Lanarkshire's share of the total number of zones in that category.

Table 1: South Lanarkshire Zones in Scottish context - 2009

| Level of Multiple Deprivation | Number of Zones in 2009 | % of Scottish zones |
|-------------------------------|-------------------------|---------------------|
| Worst 5% of zones | 11 | 3.4% |
| Worst 10% of zones | 32 | 4.9% |
| Worst 15% of zones | 52 | 5.3% |
| Worst 20% of zones | 77 | 5.9% |
| Rest | 251 | 9.6% |
| Least deprived 20% of zones | 70 | 5.4% |
| Least deprived 15% of zones | 50 | 5.1% |
| Least deprived 5% of zones | 8 | 2.5% |
| TOTAL | 398 | 6.1% |

The Scottish Government has decided that for policy and funding allocations it will focus on the datazones within the worst 15% in Scotland.

Table 2 shows the number of datazones in each council area in Scotland that were in the worst 15%, their share of the Scottish total and the proportion of each council area's datazones that were in the worst 15%.

As this table shows, South Lanarkshire has 52 datazones in the worst 15% in Scotland. It accounted for 5.3% of all the datazones in the worst 15% in Scotland. Glasgow had the most datazones in Scotland in the worst 15% - 299 (30.6% of the total). Next came North Lanarkshire with 90 (9.2%) and Edinburgh with 58 (5.9%). South Lanarkshire had the 5th largest number in the worst 15%.

In relation to the proportion of a council's zones in the worst 15%, of South Lanarkshire's 398 datazones, 13.1% were in the worst 15% in Scotland. On this basis, Glasgow was the worst – with 43.1% of their datazones being in the worst 15%. Next came Inverclyde with 39.1% in the worst 15%, followed by Dundee (30.7%), West Dunbartonshire (26.3%) and North Ayrshire (25.1%). On this basis, South Lanarkshire had the 10th highest proportion of its datazones in the worst 15%.

There were three council areas with no datazones in the worst 15% in Scotland, the island authorities of Orkney, Shetland and Eilean Siar.

Table 2: Datazones in worst 15% in SIMD 2009 by council

| Council area | 2009 | | |
|--------------------------|----------------------------|---------------|-----------------------|
| | No. datazones in worst 15% | % of Scotland | % of area's datazones |
| Aberdeen City | 27 | 2.8 | 10.1 |
| Aberdeenshire | 4 | 0.4 | 1.3 |
| Angus | 6 | 0.6 | 4.2 |
| Argyll and Bute | 10 | 1.0 | 8.2 |
| Clackmannanshire | 13 | 1.3 | 20.3 |
| Dumfries and Galloway | 9 | 0.9 | 4.7 |
| Dundee City | 55 | 5.6 | 30.7 |
| East Ayrshire | 30 | 3.1 | 19.5 |
| East Dumbartonshire | 4 | 0.4 | 3.1 |
| East Lothian | 3 | 0.3 | 2.5 |
| East Renfrewshire | 5 | 0.5 | 4.2 |
| Edinburgh City | 58 | 5.9 | 10.6 |
| Eilean Siar | 0 | 0.0 | 0.0 |
| Falkirk | 20 | 2.0 | 10.2 |
| Fife | 55 | 5.6 | 12.1 |
| Glasgow City | 299 | 30.6 | 43.1 |
| Highland | 16 | 1.6 | 5.5 |
| Inverclyde | 43 | 4.4 | 39.1 |
| Midlothian | 4 | 0.4 | 3.6 |
| Moray | 1 | 0.1 | 0.9 |
| North Ayrshire | 45 | 4.6 | 25.1 |
| North Lanarkshire | 90 | 9.2 | 21.5 |
| Orkney | 0 | 0.0 | 0.0 |
| Perth and Kinross | 7 | 0.7 | 4.0 |
| Renfrewshire | 41 | 4.2 | 19.2 |
| Scottish Borders | 5 | 0.5 | 3.8 |
| Shetland | 0 | 0.0 | 0.0 |
| South Ayrshire | 19 | 1.9 | 12.9 |
| South Lanarkshire | 52 | 5.3 | 13.1 |
| Stirling | 7 | 0.7 | 6.4 |
| West Dunbartonshire | 31 | 3.2 | 26.3 |
| West Lothian | 17 | 1.7 | 8.1 |
| SCOTLAND | 976 | 100.0% | 15.0% |

Table 3 shows the same information but for the most deprived 5% of areas in Scotland.

Table 3: Datazones in worst 5% in SIMD 2009 by council

| Council area | 2009 | | |
|--------------------------|---------------------------|---------------|-----------------------|
| | Nos datazones in worst 5% | % of Scotland | % of area's datazones |
| Aberdeen City | 7 | 2.2 | 2.6 |
| Aberdeenshire | 0 | 0.0 | 0.0 |
| Angus | 0 | 0.0 | 0.0 |
| Argyll and Bute | 1 | 0.3 | 0.8 |
| Clackmannanshire | 2 | 0.6 | 3.1 |
| Dumfries and Galloway | 3 | 0.9 | 1.6 |
| Dundee City | 10 | 5.8 | 10.6 |
| East Ayrshire | 11 | 3.4 | 7.1 |
| East Dunbartonshire | 1 | 0.3 | 0.8 |
| East Lothian | 0 | 0.0 | 0.0 |
| East Renfrewshire | 1 | 0.3 | 0.0 |
| Edinburgh City | 24 | 7.4 | 4.4 |
| Eilean Siar | 0 | 0.0 | 0.0 |
| Falkirk | 2 | 0.6 | 1.0 |
| Fife | 8 | 2.5 | 1.8 |
| Glasgow City | 147 | 45.2 | 21.2 |
| Highland | 4 | 1.2 | 1.4 |
| Inverclyde | 17 | 5.2 | 15.5 |
| Midlothian | 0 | 0.0 | 0.0 |
| Moray | 0 | 0.0 | 0.0 |
| North Ayrshire | 11 | 3.4 | 6.1 |
| North Lanarkshire | 22 | 6.8 | 5.3 |
| Orkney | 0 | 0.0 | 0.0 |
| Perth and Kinross | 2 | 0.6 | 1.1 |
| Renfrewshire | 13 | 4.0 | 6.1 |
| Scottish Borders | 1 | 0.3 | 0.8 |
| Shetland | 0 | 0.0 | 0.0 |
| South Ayrshire | 6 | 1.8 | 4.1 |
| South Lanarkshire | 11 | 3.4 | 2.8 |
| Stirling | 4 | 1.2 | 3.6 |
| West Dunbartonshire | 8 | 2.5 | 6.8 |
| West Lothian | 0 | 0.0 | 0.0 |
| SCOTLAND | 325 | 100.0% | 5.0% |

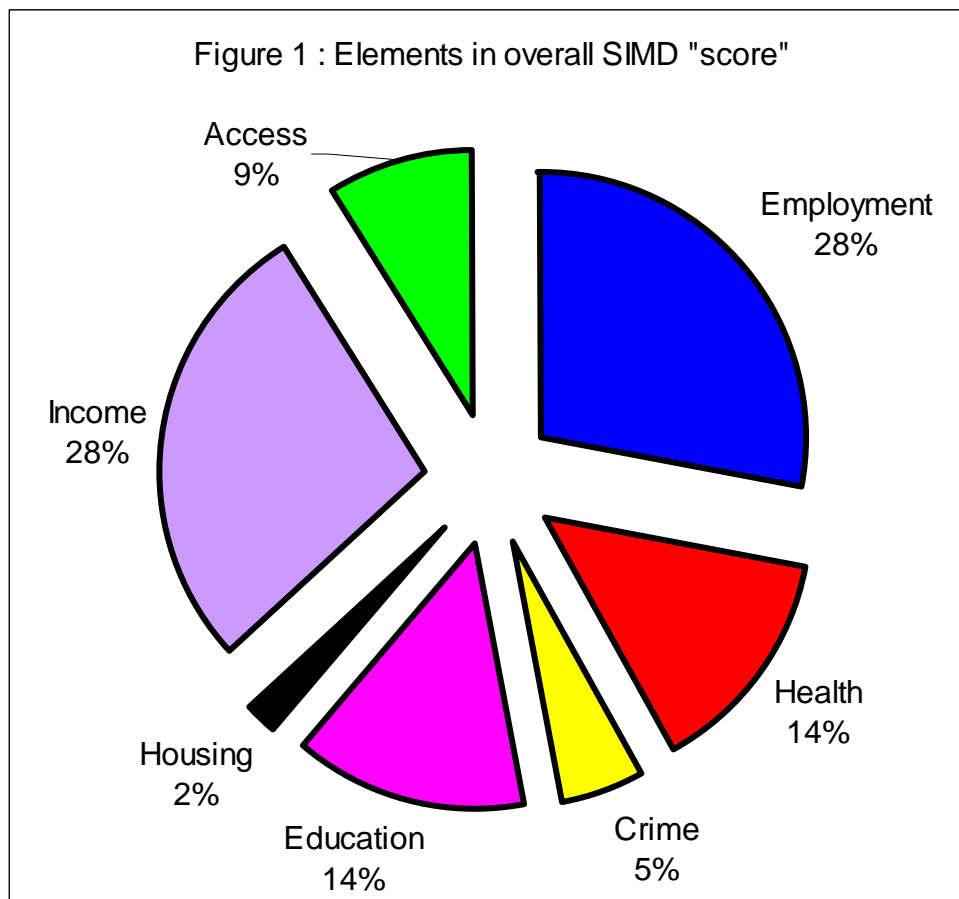
Glasgow had 45.2% of all Scottish datazones in the worst 5% in Scotland, Edinburgh had 7.4%, North Lanarkshire accounted for 6.8%, Dundee for 5.8%, Inverclyde with 5.2%, Renfrewshire for 4% and then North Ayrshire, East Ayrshire and South Lanarkshire – all at 3.4%.

Just over a fifth – 21.2% - of Glasgow datazones were in the worst 5% in Scotland. In Inverclyde, 15.5% of all its datazones were in the worst 5% and 10.6% of Dundee's datazones were in the worst 5%. South Lanarkshire's figure – of 2.8% - was the 13th highest in Scotland.

There were 8 council areas with no datazones in the worst 5% in Scotland.

The SIMD 2009 was calculated using 38 indicators across each of 7 domains. Each datazone was ranked in relation to the scores derived from the indicators under each domain and then these ranks were combined on a weighted basis to produce an overall score and ranking.

Figure 1 shows the weighting attached to each domain that fed into the overall SIMD2009 deprivation score for a datazone.



Employment Deprived at a Council level

The 2009 SIMD identified 24,435 working age residents of South Lanarkshire who were Employment deprived. This was 6.2% of all the employment deprived in Scotland and the 5th largest number in Scotland. Glasgow accounted for 18% of Scotland's employment deprived, North Lanarkshire for 7.9%, Edinburgh for 7.3% and Fife at 6.9%.

As a proportion of the working age population, the number of Employment deprived in South Lanarkshire amounted to 13% of the working population. This compares with the Scottish average of 12%. The highest Employment Deprivation rates in Scotland were in Glasgow and Inverclyde at 18%. Next came West Dunbartonshire at 17%, then North Ayrshire and Dundee at 16%, East Ayrshire and North Lanarkshire at 15% and Clackmannanshire at 14%. South Lanarkshire had the equal 9th highest rate – alongside Renfrewshire and South Ayrshire.

The lowest Employment deprived rates were of 7% in Aberdeenshire, East Renfrewshire, Shetland and Orkney.

Between the SIMD2006 and SIMD2009 the number of Employment deprived people in South Lanarkshire fell by 1,835 or 7%. Overall, the Scottish figure fell by 4.7%, down 19,238.

South Lanarkshire experienced the 9th largest percentage fall over the period. The Shetland islands had the largest percentage fall, of 11.4%, followed by Aberdeen, down 9.2% and Eilean Siar, down 8.7%. Glasgow and North Lanarkshire both experienced larger percentage declines over this period than South Lanarkshire, both down 7.6%.

Four council areas showed an increase, with the largest percentage increases being in Scottish Borders, up 5.5%, West Lothian (+3.2%), East Lothian (+1.8%) and Dumfries & Galloway (+0.2%). Midlothian had the smallest percentage decline, down 1.2%.

Table 4 shows the number of Employment deprived in SIMD 2009 by council area, its share of Scotland, its Employment deprived rate and the percentage change in the numbers of employment deprived between the SIMD2006 and the SIMD2009.

Table 4: Employment deprived in SIMD 2009 by council

| Council area | Employment deprived 2009 | % Scotland in 2009 | Employment deprived rate 2009 | Change in employment deprived 2006-2009 |
|--------------------------|--------------------------|--------------------|-------------------------------|---|
| Aberdeen City | 12,380 | 3.2% | 9% | -9.2% |
| Aberdeenshire | 9,570 | 2.4% | 7% | -7.4% |
| Angus | 6,430 | 1.6% | 10% | -4.3% |
| Argyll & Bute | 5,410 | 1.4% | 10% | -2.2% |
| Clackmannanshire | 4,475 | 1.1% | 14% | -4.2% |
| Dumfries & Galloway | 9,905 | 2.5% | 12% | 0.2% |
| Dundee City | 14,555 | 3.7% | 16% | -2.4% |
| East Ayrshire | 10,820 | 2.8% | 15% | -4.2% |
| East Dunbartonshire | 4,950 | 1.3% | 8% | -5.6% |
| East Lothian | 5,275 | 1.3% | 9% | 1.8% |
| East Renfrewshire | 3,925 | 1.0% | 7% | -7.8% |
| Edinburgh, City of | 28,720 | 7.3% | 9% | -2.0% |
| Eilean Siar | 1,670 | 0.4% | 11% | -8.7% |
| Falkirk | 11,415 | 2.9% | 12% | -3.7% |
| Fife | 27,166 | 6.9% | 12% | -3.8% |
| Glasgow City | 70,435 | 18.0% | 18% | -7.6% |
| Highland | 12,870 | 3.3% | 10% | -5.1% |
| Inverclyde | 8,945 | 2.3% | 18% | -6.2% |
| Midlothian | 5,150 | 1.3% | 11% | -1.2% |
| Moray | 4,655 | 1.2% | 9% | -2.7% |
| North Ayrshire | 12,780 | 3.3% | 16% | -2.7% |
| North Lanarkshire | 30,965 | 7.9% | 15% | -7.6% |
| Orkney Islands | 835 | 0.2% | 7% | -7.2% |
| Perth & Kinross | 6,800 | 1.7% | 8% | -1.4% |
| Renfrewshire | 14,045 | 3.6% | 13% | -4.8% |
| Scottish Borders | 5,865 | 1.5% | 9% | 5.5% |
| Shetland Islands | 895 | 0.2% | 7% | -11.4% |
| South Ayrshire | 8,270 | 2.1% | 13% | -3.3% |
| South Lanarkshire | 24,435 | 6.2% | 13% | -7.0% |
| Stirling | 5,175 | 1.3% | 10% | -2.5% |
| West Dunbartonshire | 9,450 | 2.4% | 17% | -3.3% |
| West Lothian | 12,430 | 3.2% | 12% | 3.2% |
| Scotland | 390,669 | 100% | 12% | -4.7% |

Income Deprived at a Council level

The 2009 SIMD identified 51,950 people in South Lanarkshire – adults and children - who were Income deprived. This was 5.9% of all the Income deprived people in Scotland and the 5th largest number in Scotland.

Glasgow accounted for 18.9% of Scotland's Income deprived, with North Lanarkshire accounting for 7.7%, Edinburgh for 7.2% and Fife for 6.7%.

Overall, 16.8% of South Lanarkshire's population were identified as Income deprived in the SIMD 2009. This was just below the Scottish average of 17.1%. Glasgow had 28.6% of its population being Income deprived, followed by West Dunbartonshire with 24%, Inverclyde with 23.7% and Dundee with 23%. South Lanarkshire had the 10th highest rate of Income deprivation.

Table 5 shows the number of Income deprived residents in each council area, its share of the Scottish total and the proportion of its population who were Income deprived.

The Scottish Government has changed the way that the Income deprived estimates are calculated and, as a result, it is not possible to compare the SIMD2009 figures with the SIMD2006.

Table 5: Income deprived in SIMD 2009 by council

| Council area | Count | % Scotland | % Total Population |
|--------------------------|----------------|-------------|--------------------|
| Aberdeen City | 25,575 | 2.9% | 12.2% |
| Aberdeenshire | 21,735 | 2.5% | 9.1% |
| Angus | 15,660 | 1.8% | 14.2% |
| Argyll & Bute | 12,240 | 1.4% | 13.4% |
| Clackmannanshire | 9,520 | 1.1% | 19.0% |
| Dumfries & Galloway | 23,640 | 2.7% | 16.0% |
| Dundee City | 32,795 | 3.7% | 23.0% |
| East Ayrshire | 25,150 | 2.9% | 21.1% |
| East Dunbartonshire | 9,775 | 1.1% | 9.3% |
| East Lothian | 11,990 | 1.4% | 12.7% |
| East Renfrewshire | 8,740 | 1.0% | 9.8% |
| Edinburgh, City of | 63,200 | 7.2% | 13.5% |
| Eilean Siar | 4,355 | 0.5% | 16.5% |
| Falkirk | 23,715 | 2.7% | 15.7% |
| Fife | 59,035 | 6.7% | 16.4% |
| Glasgow City | 166,630 | 18.9% | 28.6% |
| Highland | 30,235 | 3.4% | 13.9% |
| Inverclyde | 19,210 | 2.2% | 23.7% |
| Midlothian | 11,420 | 1.3% | 14.4% |
| Moray | 11,015 | 1.2% | 12.7% |
| North Ayrshire | 30,090 | 3.4% | 22.1% |
| North Lanarkshire | 87,450 | 7.7% | 20.8% |
| Orkney Islands | 2,300 | 0.3% | 11.5% |
| Perth & Kinross | 16,105 | 1.8% | 11.3% |
| Renfrewshire | 30,650 | 3.5% | 18.1% |
| Scottish Borders | 14,070 | 1.6% | 12.6% |
| Shetland Islands | 2,310 | 0.3% | 10.5% |
| South Ayrshire | 18,215 | 2.1 | 16.3% |
| South Lanarkshire | 51,950 | 5.9% | 16.8% |
| Stirling | 11,130 | 1.3% | 12.6% |
| West Dunbartonshire | 21,680 | 2.5% | 24.0% |
| West Lothian | 27,375 | 3.1% | 16.3% |
| Scotland | 879,199 | 100% | 17.1% |

South Lanarkshire worst & least deprived datazones by domain

Table 6 shows, for South Lanarkshire, the number of datazones it had in the worst 5%, 10% and 15% in Scotland – and the number in the least deprived 5% and 15% - by domain. It also shows what percentage of all datazones in Scotland in each category were accounted for by South Lanarkshire.

Table 6: South Lanarkshire datazones by domain in SIMD 2009

| Domain | Worst 5% | Worst 10% | Worst 15% | Least 15% | Least 5% |
|-------------------------------------|-------------|-------------|-------------|-------------|-------------|
| Employment | 8 | 37 | 57 | 39 | 4 |
| Income | 7 | 27 | 50 | 54 | 14 |
| Health | 8 | 29 | 50 | 39 | 3 |
| Education | 26 | 43 | 63 | 52 | 9 |
| Access | 9 | 22 | 40 | 59 | 7 |
| Crime | 13 | 33 | 46 | 49 | 21 |
| Housing | 1 | 6 | 29 | 60 | 21 |
| OVERALL | 11 | 37 | 52 | 50 | 8 |
| Percentage of Scottish total | | | | | |
| Employment | 2.5% | 5.7% | 5.8% | 4.0% | 1.2% |
| Income | 2.1% | 4.1% | 5.1% | 5.5% | 4.3% |
| Health | 2.5% | 4.5% | 5.1% | 4.0% | 0.9% |
| Education | 8.0% | 6.6% | 6.4% | 5.3% | 2.8% |
| Access | 2.8% | 3.4% | 4.1% | 6.1% | 2.1% |
| Crime | 4.0% | 5.1% | 4.7% | 5.0% | 6.5% |
| Housing | 0.3% | 0.9% | 3.0% | 6.1% | 6.5% |
| OVERALL | 3.4% | 5.7% | 5.3% | 5.1% | 2.5% |

As this table shows, South Lanarkshire had 26 datazones in the Education domain worst 5% in Scotland (8% of the Scottish total) and 13 datazones in the worst 5% for Crime (4% of the Scottish total). It had 7 datazones in the worst 5% in Scotland for Income deprivation (2.1%) and 8 each for Employment and Health deprivation – 2.5% of the Scottish total. It only had one datazone in the worst 5% for Housing – though this domain still only uses data from the 2001 Census of Population.

South Lanarkshire had 63 datazones in the worst 15% in Scotland for Education deprivation (6.4% of the Scottish total), 57 in the most deprived 15% of Scottish datazones for Employment deprivation (5.8%) and 50 (5.1% each) in the 15% most deprived datazones for both Income deprivation and Health deprivation.

In the SIMD2009, South Lanarkshire had 21 datazones in the least deprived 5% of Scottish datazones for both Crime and Housing - 6.5% of the Scottish total. It also had 14 datazones in the least deprived 5% of Scottish datazones for Income deprivation (4.3% of the Scottish total).

It had only 3 datazones in the least deprived 5% for Health deprivation and only 4 in the least deprived 5% in Scotland in relation to Employment deprivation.

In terms of the least deprived 15% of datazones in Scotland, it had 60 datazones amongst the 15% least deprived in Scotland for Housing (6.1% of the Scottish total) – though it must be remembered that the data in this domain remains based on the 2001 Census of Population. It had 59 datazones in the least deprived 15% in

Scotland in relation to Geographic Access to Services (6.1% of the Scottish total) and 54 (5.5%) of the datazones in Scotland in the least deprived 15% for Income deprivation.

Overall deprivation – Individual datazones

In the SIMD2009 the most deprived area of South Lanarkshire was Whitlawburn North. It was ranked the 46th most deprived area in Scotland. The next most deprived areas were Rutherglen West (89th most deprived area in Scotland), Whitlawburn South (139th worst), High Blantyre North East (187th worst) and Fairhill North East at 189th worst.

Table 7 shows the 52 South Lanarkshire datazones in the 15% most deprived areas in Scotland. The datazones highlighted in Yellow are those in the worst 5% in Scotland and those in the most deprived 10% highlighted in Green, with the four “new” entrants to the most deprived 15% of areas in Scotland marked in Pink.

Appendix 2 shows, for the most deprived 15% datazones in South Lanarkshire, their ranking in Scotland under each domain. The colours show whether they are in the worst 5%, 6-10%, 11-15%, 16-20%, 21-80%, 81-85%, 86-90%, 91-95%, and least deprived 5% in Scotland under the SIMD2009.

Table 8 shows the 50 datazones in South Lanarkshire which were in the least deprived 15% of datazones in Scotland in the SIMD2009. There were 8 zones in the least deprived 5% of areas. The least deprived datazone in South Lanarkshire was Cambuslang North, ranked 104th least deprived in Scotland. Next came Strathaven East, ranked 125th least deprived, followed by Uddingston West at 128th least deprived in Scotland, Lanark West, 173rd, and Strathaven North East, 181st least deprived in Scotland.

Table 7: South Lanarkshire datazones in the worst 15% in Scotland

| Datazone | SIMD 2009 Overall Rank in Scotland |
|---------------------------|------------------------------------|
| Whitlawburn North | 46 |
| Rutherglen West | 89 |
| Whitlawburn South | 139 |
| High Blantyre North East | 187 |
| Fairhill North East | 189 |
| Rutherglen Central | 203 |
| Hillhouse East | 237 |
| Springhall West | 274 |
| Wellhall North | 300 |
| Westburn | 305 |
| Whitehill West | 313 |
| Strutherhill West | 338 |
| Fernhill Central | 366 |
| High Burnside North | 386 |
| Strutherhill North West | 402 |
| Laighstonehall North East | 419 |
| Burnhill | 433 |
| Strutherhill North East | 440 |
| Fairhill North West | 451 |
| Hillhouse South West | 459 |
| Drumreoch | 462 |
| Whitehill South | 463 |
| Rigside - Douglas Water | 505 |
| Udston North East | 506 |
| Udston Central | 528 |
| Hareleeshill Central | 533 |
| Lesmahagow South | 579 |
| Whitehill North | 597 |
| Hareleeshill East | 607 |
| Blantyre East | 619 |
| Strutherhill South West | 634 |
| Fernhill North | 653 |
| Auchinraith North | 682 |
| Rutherglen North | 692 |
| Burnbank South | 706 |
| Bent South | 713 |
| Arden | 764 |
| Halfway South | 772 |
| Hillhouse Central | 779 |
| Cathkin South | 804 |
| Cambuslang Centre | 809 |
| Cadzow North | 811 |
| High Blantyre South | 817 |
| Strutherhill East | 832 |
| Clydeford East | 835 |
| Fernhill South | 838 |
| Wellside West | 884 |
| Douglas Central | 908 |
| Eddlewood North | 930 |
| Cathkin North | 933 |
| Smyllum Park | 954 |
| Kirkmuirhill South | 976 |

Table 8: South Lanarkshire datazones in least deprived 10% in Scotland

| Datzone | SIMD 2009 Overall Rank in Scotland |
|--------------------------|---|
| Bothwell East | 5,531 |
| Burnside | 5,544 |
| Arrotshole | 5,546 |
| Larkhall Central | 5,552 |
| Larkhall East | 5,563 |
| Stewartfield North | 5,598 |
| Silvertonhill South East | 5,602 |
| Silverbank East | 5,605 |
| Earnock Central | 5,610 |
| Bothwell Park | 5,630 |
| Bothwell Castle | 5,633 |
| Eddlewood East | 5,700 |
| Kittoch | 5,720 |
| Calderglen | 5,728 |
| Drybrough | 5,737 |
| Burnside East | 5,741 |
| Mossneuk West | 5,745 |
| Gardenhall - Jackton | 5,747 |
| Stewartfield Central | 5,753 |
| Newlandsmuir West | 5,773 |
| Mossneuk North | 5,784 |
| St Leonards South West | 5,796 |
| Strathaven West | 5,818 |
| Merryton North | 5,828 |
| Chantinghall East | 5,830 |
| Kittochside West | 5,860 |
| Wellhall West | 5,882 |
| Holmhills East | 5,899 |
| Strathaven South West | 5,906 |
| St Leonards North East | 5,907 |
| Wellhall East | 5,915 |
| Burgh East | 5,919 |
| Hairmyres West | 5,937 |
| Biggar Central | 5,991 |
| Kirkland South | 6,047 |
| Earnock East | 6,054 |
| High Crosshill | 6,056 |
| Mossneuk North East | 6,096 |
| Crosshill | 6,109 |
| Barncluith East | 6,116 |
| Ferniegair | 6,134 |
| Mossneuk South West | 6,137 |
| Lindsayfield South | 6,191 |
| Meikle Earnock East | 6,231 |
| Uddingston North West | 6,268 |
| Strathaven North East | 6,324 |
| Lanark West | 6,332 |
| Uddingston West | 6,377 |
| Strathaven East | 6,380 |
| Cambuslang North | 6,401 |

Comparison of SIMD2006 and SIMD2009 rankings

Comparing the SIMD2009 with the SIMD2006 shows that one datazone – West Mains Central in East Kilbride – has seen no change in its ranking in Scotland (it remains the 3,823rd most deprived datazone in Scotland). Of the remaining datazones, 172 have seen their ranking get worse and 225 have seen their ranking improve.

South Lanarkshire now has 11 areas in the 5% most deprived areas in Scotland. In the SIMD2006 it had 13 areas in this category. One area has moved in – Wellhall North – the 300th most deprived area in Scotland – and three have moved out the most deprived 5% of areas in Scotland, although they remain in the most deprived 15% – Fernhill Central, Whitehill North and Burnbank South.

Four South Lanarkshire areas have entered the worst 15% in Scotland – Smyllum Park and Kirkmuirhill South – which were both in the most deprived 15% of areas in the SIMD2004 – and two areas “new” to the most deprived 15% of areas – Douglas Central and Eddlewood North.

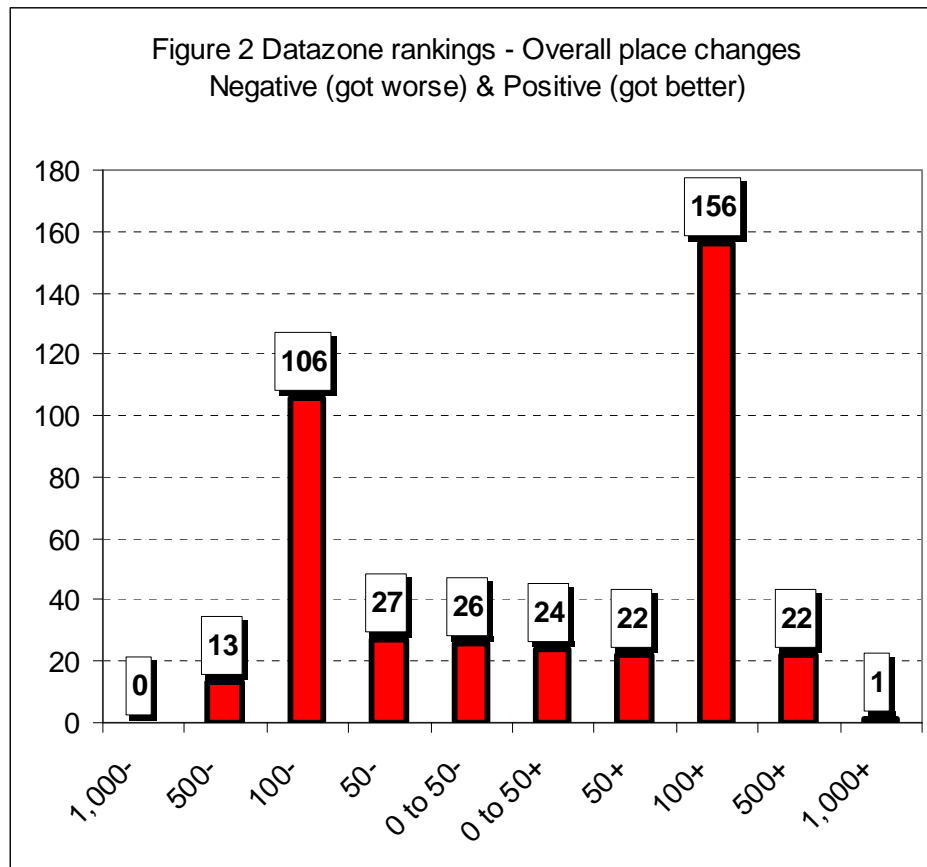
Ten South Lanarkshire areas have fallen out of the most deprived 15% of areas in Scotland between the SIMD2006 and SIMD2009. Of these ten areas, all but three had been ranked in the most deprived 15% of areas in Scotland in both the SIMD2004 and SIMD2006. Forth North, Blantyre Central and Meikle Earnock West had been outwith the most deprived 15% of areas in the SIMD2004.

Table 9 shows the datazones that left the worst 15% in the SIMD2009. Those shaded in blue had been in the worst 15% Table 10 shows the datazones in South Lanarkshire now in the worst 15% - those shaded in yellow were in the worst 5% and those in green are “new entries”.

Table 10: South Lanarkshire datazones leaving worst 15% in SIMD2006

| Datzone | 2004 | 2006 | 2009 |
|---------------------|-------------|-------------|-------------|
| Drumlaw | 672 | 749 | 1156 |
| Spittal West | 544 | 759 | 981 |
| Stonefield West | 900 | 785 | 1000 |
| Forth North | 1247 | 786 | 1037 |
| Clydesmill South | 789 | 838 | 1104 |
| Blantyre Central | 1120 | 891 | 1026 |
| Eddlewood South | 966 | 955 | 1325 |
| Meikle Earnock West | 1242 | 968 | 1306 |

Figure 2 shows the number of datazones whose ranking had moved by various places between the SIMD2006 and SIMD2009.



As this figure shows, no datazone rose by over 1,000 places, but 13 rose up the list of most deprived areas by over 500 places and 106 by over 100 to 499 places. At the other end, one datazone improved its ranking by over 1,000 places. This was Torheads, where a significant amount of new housing has been built since the SIMD2006 was produced. A further 22 improved their rankings by over 500 to 999 places and 156 by between 100-499 places.

Table 9: South Lanarkshire datazones in worst 15% in SIMD 2009

| Datzone | 2004 | 2006 | 2009 |
|---------------------------|-------------|-------------|-------------|
| Whitlawburn North | 194 | 71 | 46 |
| Rutherglen West | 103 | 47 | 89 |
| Whitlawburn South | 168 | 33 | 139 |
| High Blantyre North East | 241 | 235 | 187 |
| Fairhill North East | 340 | 187 | 189 |
| Rutherglen Central | 267 | 150 | 203 |
| Hillhouse East | 355 | 207 | 237 |
| Springhall West | 351 | 215 | 274 |
| Wellhall North | 388 | 411 | 300 |
| Westburn | 405 | 297 | 305 |
| Whitehill West | 364 | 282 | 313 |
| Strutherhill West | 390 | 350 | 338 |
| Fernhill Central | 236 | 218 | 366 |
| High Burnside North | 725 | 678 | 386 |
| Strutherhill North West | 410 | 357 | 402 |
| Laighstonehall North East | 448 | 413 | 419 |
| Burnhill | 578 | 390 | 433 |
| Strutherhill North East | 895 | 709 | 440 |
| Fairhill North West | 455 | 367 | 451 |
| Hillhouse South West | 621 | 437 | 459 |
| Drumreoch | 354 | 537 | 462 |
| Whitehill South | 386 | 441 | 463 |
| Rigside - Douglas Water | 603 | 457 | 505 |
| Udston North East | 495 | 417 | 506 |
| Udston Central | 411 | 627 | 528 |
| Hareleeshill Central | 695 | 634 | 533 |
| Lesmahagow South | 653 | 677 | 579 |
| Whitehill North | 426 | 242 | 597 |
| Hareleeshill East | 473 | 699 | 607 |
| Blantyre East | 381 | 409 | 619 |
| Strutherhill South West | 445 | 806 | 634 |
| Fernhill North | 540 | 580 | 653 |
| Auchinraith North | 612 | 567 | 682 |
| Rutherglen North | 504 | 652 | 692 |
| Burnbank South | 308 | 153 | 706 |
| Bent South | 706 | 732 | 713 |
| Arden | 569 | 609 | 764 |
| Halfway South | 682 | 630 | 772 |
| Hillhouse Central | 1092 | 645 | 779 |
| Cathkin South | 574 | 840 | 804 |
| Cambuslang Centre | 942 | 867 | 809 |
| Cadzow North | 678 | 661 | 811 |
| High Blantyre South | 278 | 602 | 817 |
| Strutherhill East | 600 | 490 | 832 |
| Clydeford East | 492 | 339 | 835 |
| Fernhill South | 605 | 629 | 838 |
| Wellside West | 452 | 646 | 884 |
| Douglas Central | 1090 | 1100 | 908 |
| Eddlewood North | 1487 | 1014 | 930 |
| Cathkin North | 580 | 775 | 933 |
| Smyllum Park | 816 | 1102 | 954 |
| Kirkmuirhill South | 903 | 1407 | 976 |

DATAZONE - EMPLOYMENT DEPRIVATION

The lowest rate was in Kittinghside West, at 1%, followed by Mossneuk South West and Hairmyres West, all with employment deprivation rates of 2%.

In relation to the Employment Deprivation domain in the Scottish Index of Multiple Deprivation, four indicators were used:-

- Working age 12-month average of Job Seekers Allowance claimants in 2008.
- Working age recipients of Incapacity Benefit - August 2008
- Working age recipients of Severe Disablement Allowance – August 2008
- Compulsory New Deal participants not included in unemployment claimant counts - August 2008

South Lanarkshire had 8 datazones in the 5% most Employment deprived areas in Scotland and 57 in the 15% most Employment deprived areas in Scotland in the SIMD2009. South Lanarkshire accounted for 6.1% of all datazones in Scotland but 5.8% of all those in the worst 15% in terms of Employment deprivation.

It had only 4 datazones in the 5% least Employment deprived areas in Scotland and 39 in the 15% of Scottish datazones which were the least Employment deprived in Scotland – 4% of the Scottish total. These were the lowest number of datazones for any domain for South Lanarkshire.

High Blantyre Central was the 86th most deprived area in Scotland in terms of Employment deprivation. The next most deprived areas were Rutherglen Central, 124th worst, Springhall West, 141st worst, and Whitlawburn North, 159th worst.

In terms of Employment deprivation rates, the overall South Lanarkshire rate was 12.1%. The rate in High Blantyre North East was 35%, 33% in both Rutherglen Central and Springhall West, 32% in Whitlawburn North, and 30% in Whitlawburn South.

Table 11 shows the number of datazones in South Lanarkshire in the most deprived 15% of areas in Scotland in the SIMD2009 in terms of employment deprivation. The rate of Employment deprivation amongst the working age population of these areas is also shown. The ones highlighted in Yellow were within the 5% most Employment deprived areas in Scotland and the ones in Green in the 10% most deprived areas.

Table 11: South Lanarkshire datazones in the worst 15% for Employment deprivation

| Datzone | Employment domain rank 2009 | Employment deprivation rate 2009 |
|---------------------------|------------------------------------|---|
| High Blantyre North East | 86 | 35.0 |
| Rutherglen Central | 124 | 33.0 |
| Springhall West | 141 | 33.0 |
| Whitlawburn North | 159 | 32.0 |
| Whitlawburn South | 229 | 30.0 |
| Hillhouse East | 249 | 29.0 |
| High Burnside North | 289 | 28.0 |
| Strutherhill South West | 319 | 29.0 |
| Rutherglen West | 344 | 29.0 |
| Drumreoch | 364 | 27.0 |
| Burnhill | 378 | 28.0 |
| Fernhill Central | 412 | 26.0 |
| Arden | 414 | 27.0 |
| Laighstonehall North East | 425 | 27.0 |
| Wellhall North | 435 | 26.0 |
| Whitehill West | 441 | 26.0 |
| Udston North East | 444 | 26.0 |
| Bent South | 462 | 26.0 |
| Strutherhill North West | 477 | 25.0 |
| Udston Central | 488 | 26.0 |
| Cathkin North | 516 | 24.0 |
| Rigside - Douglas Water | 517 | 25.0 |
| Strutherhill North East | 526 | 24.0 |
| Westburn | 527 | 24.0 |
| Wheatlands North | 531 | 25.0 |
| Gallowflat North | 543 | 25.0 |
| Whitehill South | 554 | 25.0 |
| Fairhill North East | 565 | 25.0 |
| Cadzow North | 566 | 24.0 |
| Spittal West | 575 | 24.0 |
| Cambuslang Centre | 587 | 24.0 |
| High Blantyre North | 588 | 24.0 |
| Strutherhill West | 606 | 24.0 |
| Newbigging | 614 | 24.0 |
| Calderwood North West | 615 | 24.0 |
| Fairhill North West | 618 | 24.0 |
| Halfway South | 620 | 24.0 |
| Blantyre East | 657 | 24.0 |
| Hareleeshill Central | 665 | 23.0 |
| Hillhouse South West | 670 | 23.0 |
| Fernhill North | 699 | 22.0 |
| Hillhouse Central | 709 | 23.0 |
| Burnbank South | 761 | 23.0 |
| Carluke East | 779 | 22.0 |
| Lanark Central | 787 | 23.0 |
| Hareleeshill East | 805 | 23.0 |
| Clydesmill South | 809 | 23.0 |
| Wellside West | 811 | 22.0 |
| Rutherglen North | 825 | 22.0 |
| Muirhead East | 850 | 21.0 |
| Cathkin South | 883 | 22.0 |
| Wellside East | 888 | 21.0 |
| Lesmahagow South | 892 | 21.0 |
| Blantyre Central | 896 | 22.0 |
| Stonefield West | 907 | 21.0 |
| Smyllum Park | 909 | 21.0 |
| Clincarthill North | 969 | 20.0 |

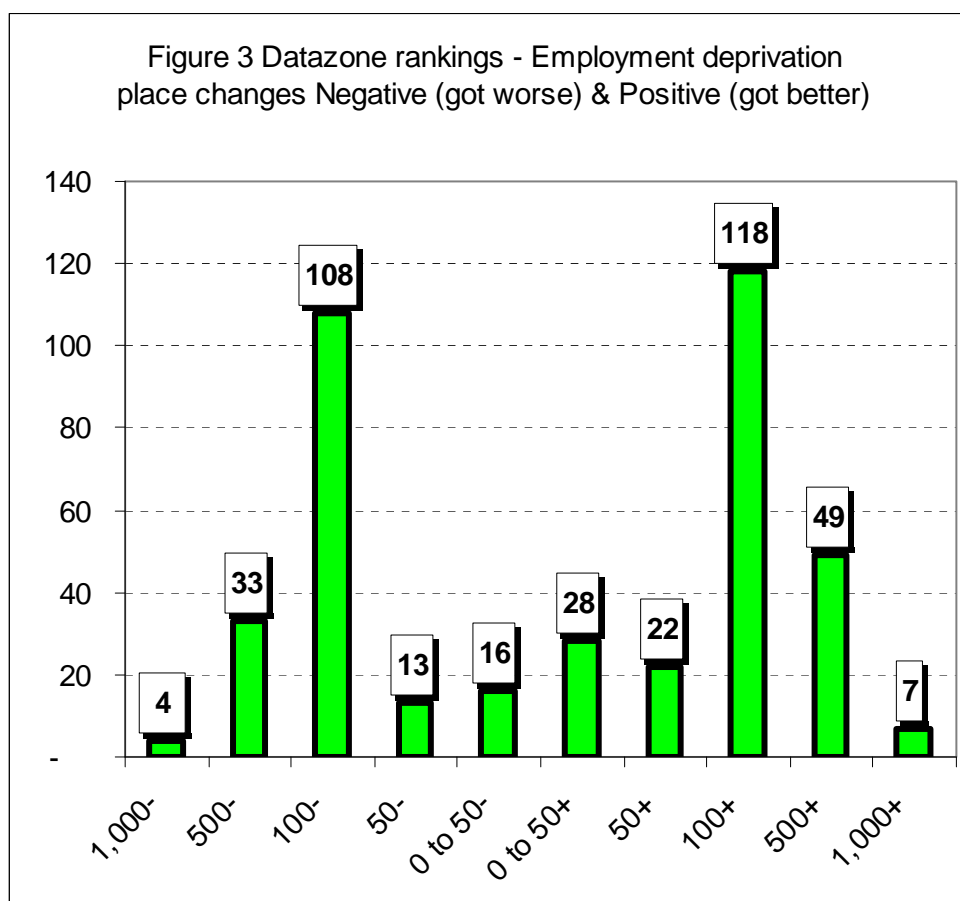
Between the SIMD2006 and SIMD2009, 174 of South Lanarkshire's datazones moved up the Scottish rankings in terms of Employment deprivation (that is, showed relative worsening) with the remaining 224 moving down (that is, showed a relative improvement).

Figure 3 shows the number of datazones whose ranking had moved by various places between the SIMD2006 and SIMD2009 in relation to Employment deprivation.

As this figure shows, 4 datazones saw their ranking worsen by over 1,000 places and 33 by between 500 and 999 places, with 108 seeing their ranking worsen by between 100 and 499 places. On the other hand, 7 saw their ranking improve by over 1,000 places, 49 by between 500 and 1,000 places and 118 by between 100 and 499 places.

The four datazones whose ranking worsened by more than 1,000 places were Belstane, Auldtoun-West Toun, Carluke South West and Law South West.

The seven which saw their rankings improve by over 1,000 places were Torheads, Newton, Millheugh, Hairmyres, Libberton-Thankerton, Gardenhall-Jackton and Stewartfield Central.



In South Lanarkshire, the numbers fell of Employment deprived individuals fell by 1,816 or 6.9% - down from 26,271 in the SIMD2006 to 24,455 in the SIMD 2009. At a datazone level in South Lanarkshire, the number of Employed deprived residents fell in 115 out of 398 datazones, remained constant in 16 and fell in 267. In 59 datazones, the numbers increased or fell by less than the South Lanarkshire average.

Table 12 shows the ten with the greatest percentage change – both up and down – in South Lanarkshire between the SIMD2006 and SIMD 2009 and the actual numbers involved.

Table 12: Datazones with greatest % changes in employment deprived

| Datazone Name | Number of Employment Deprived 2006 | Number of Employment Deprived 2009 | Nos change | % change |
|--------------------------|---|---|-------------------|-----------------|
| Lanark Moor | 30 | 50 | 20 | 66.7% |
| Auldtoun-West Toun | 51 | 75 | 24 | 47.1% |
| Meikle Earnock East | 17 | 25 | 8 | 47.1% |
| The Murray East | 25 | 35 | 10 | 40.0% |
| Thorntonhall | 11 | 15 | 4 | 36.4% |
| Torheads | 74 | 100 | 26 | 35.1% |
| Rogerton - Nerston | 26 | 35 | 9 | 34.6% |
| Belstane | 30 | 40 | 10 | 33.3% |
| Strathaven West Central | 15 | 20 | 5 | 33.3% |
| Birkwood-Dalquandy | 34 | 45 | 11 | 32.4% |
| <hr/> | | | | |
| St Leonards Centre North | 46 | 30 | -16 | -34.8% |
| Mossneuk West | 31 | 20 | -11 | -35.5% |
| Calderglen | 24 | 15 | -9 | -37.5% |
| Stewartfield South | 24 | 15 | -9 | -37.5% |
| Bothwell Castle | 33 | 20 | -13 | -39.4% |
| Drumclog | 25 | 15 | -10 | -40.0% |
| Millheugh | 43 | 25 | -18 | -41.9% |
| Mossneuk North East | 19 | 10 | -9 | -47.4% |
| Gardenhall - Jackton | 31 | 15 | -16 | -51.6% |
| Kittochside West | 12 | 5 | -7 | -58.3% |

Of the ten areas that experienced the largest percentage increases in the number of Employment deprived people between the SIMD2006 and SIMD2009, the largest increases were in Lanark Moor, up 66.7%, Auldtoun-West Toun and Meikle Earnock East, both up 47.1% and The Murray East, which experienced a 40% rise.

Kittochside West had the largest percentage decline in the number of Employment deprived people between the SIMD2006 and SIMD2009 – down 58.3%. Next came Gardenhall-Jackton, down 51.6%, Mossneuk North East, down 57.4%. Millheugh, down 41.9% and Drumclog, down 40%.

DATAZONE – EMPLOYMENT DEPRIVATION UPDATE

As stated earlier the information in the Employment deprivation domain relates to 2008 but the impact of the current economic recession in relation to employment deprivation has been more apparent since then. An analysis has been undertaken updating the indicators to the average claimant count of the period from January to September 2009 and the information on Incapacity Benefit and Severe Disablement Allowance from August 2008 to February 2009. The information on New Deal participation was not capable of being updated.

Looking purely at these three indicators, the updated analysis shows that there were 25,999 employment deprived people in South Lanarkshire, up 11% from the SIMD2009 figure. This compares to a 7% rise in Scotland as a whole and so South Lanarkshire's share of Scottish employment deprived rises from 6.2% to 6.5%.

At a datazone level, the general result has been for South Lanarkshire datazones to shift upwards in terms of Employment deprivation. In the SIMD2009 there were 8 datazones in South Lanarkshire in the worst 5% but now there are 13, with the numbers in the worst 10% of datazones rising from 36 to 45 and the number in the worst 15% from 60 to 64.

In the SIMD2009, 13% of the South Lanarkshire datazones in the worst 15% in Scotland were in the worst 5% but the updated figures show that now a fifth of the South Lanarkshire datazones were in the worst 5% in Scotland. Similarly, the numbers in the least deprived categories have fallen, from 7 in the least deprived 5% of datazones to 5, and in the least deprived 15% from 35 to 27.

Overall, of the 398 datazones in South Lanarkshire, 267 –nearly two-thirds of the total – saw their Scottish ranking worsen. Over the period considered, the number of employment deprived fell in 48 datazones (12% of South Lanarkshire datazones), remained constant in one, and rose in 349 (88% of datazones). For 92 datazones – over 22% of datazones – the numbers of employment deprived rose by over a fifth, and in 61 by over a quarter.

Table 13 shows the number of South Lanarkshire datazones in the most deprived 5%, 10%, 15% and 20% and those in the least deprived 5%,10%, 15% and 20% in both the SIMD2009 and the Updated version.

Table 13: South Lanarkshire Employment deprivation SIMD2009 and updated position

| Datatypes | SIMD 2009 | Update | change |
|-----------------------|------------------|---------------|---------------|
| Worst 5% | 8 | 13 | +5 |
| Worst 10% | 36 | 45 | +9 |
| Worst 15% | 60 | 64 | +4 |
| Worst 20% | 81 | 88 | +7 |
| Least deprived | | | |
| Least deprived 20% | 54 | 47 | -7 |
| Least deprived 15% | 35 | 27 | -8 |
| Least deprived 10% | 21 | 17 | -4 |
| Least deprived 5% | 7 | 5 | -2 |

DATAZONE - INCOME DEPRIVATION

The Income Deprivation domain in the Scottish Index of Multiple Deprivation in 2009 was compiled from six indicators. These were:-

- Number of Working age adults receiving Income Support – August 2008
- 60 plus aged residents receiving Guaranteed Pension Credit – August 2008
- Children (under 15) dependent on a recipient of Income Support – August 2007
- Adults receiving Job Seekers Allowance – April 2008
- Children (under 15) dependent on a recipient of Job Seekers Allowance – August 2007.
- Number of adults & children in Tax Credit Families on low incomes – August 2006

In terms of Income deprivation, South Lanarkshire had 7 datazones in the most deprived 5% in Scotland and 27 in the most deprived 15% in the SIMD2006. South Lanarkshire accounted for 6.1% of all datazones in Scotland but only 5.1% of all those in the worst 15% in Scotland in terms of Income deprivation.

It also had 14 datazones in the 5% least Income deprived datazones in Scotland and 54 in the 15% of datazones which were the least income deprived in Scotland – 5.5% of the Scottish total.

Table 14 shows the number of Income deprived datazones in the worst 15% in Scotland in the SIMD2009, along with the rate of Income deprivation amongst the resident population in each area. The ones highlighted in Yellow were within the 5% most income deprived areas in Scotland and the ones in Green in the 10% most deprived areas.

Whitlawburn North was the 35th most deprived area in Scotland in terms of Income deprivation in the SIMD2009. Rutherglen West was ranked 102nd worst, Whitlawburn South 108th worst, Fairhill North East 182nd worst, and Westburn 189th worst.

Cambuslang North was ranked the 29th least Income deprived area of Scotland under the SIMD2009, with Gardenhall-Jackton being ranked 122nd least Income deprived, followed by Strathaven North East (136th), and Meikle Earnock East as the 157th least Income deprived area in Scotland.

Overall, the Income deprivation rate for South Lanarkshire was 16.8%. In the case of Whitlawburn North, the rate was 65%, followed by Rutherglen West and Whitlawburn South, both with rates of 55%, and then Fairhill North East with a rate of 50%. There were 134 datazones with over a fifth of their population being income deprived.

The lowest rate of Income deprivation was in Cambuslang North, at 1%, followed by Gardenhall-Jackton, Strathaven North East and Meikle Earnock East – all with rates of 2%.

Table 14: Datazones in the worst 15% in Scotland for Income Deprivation

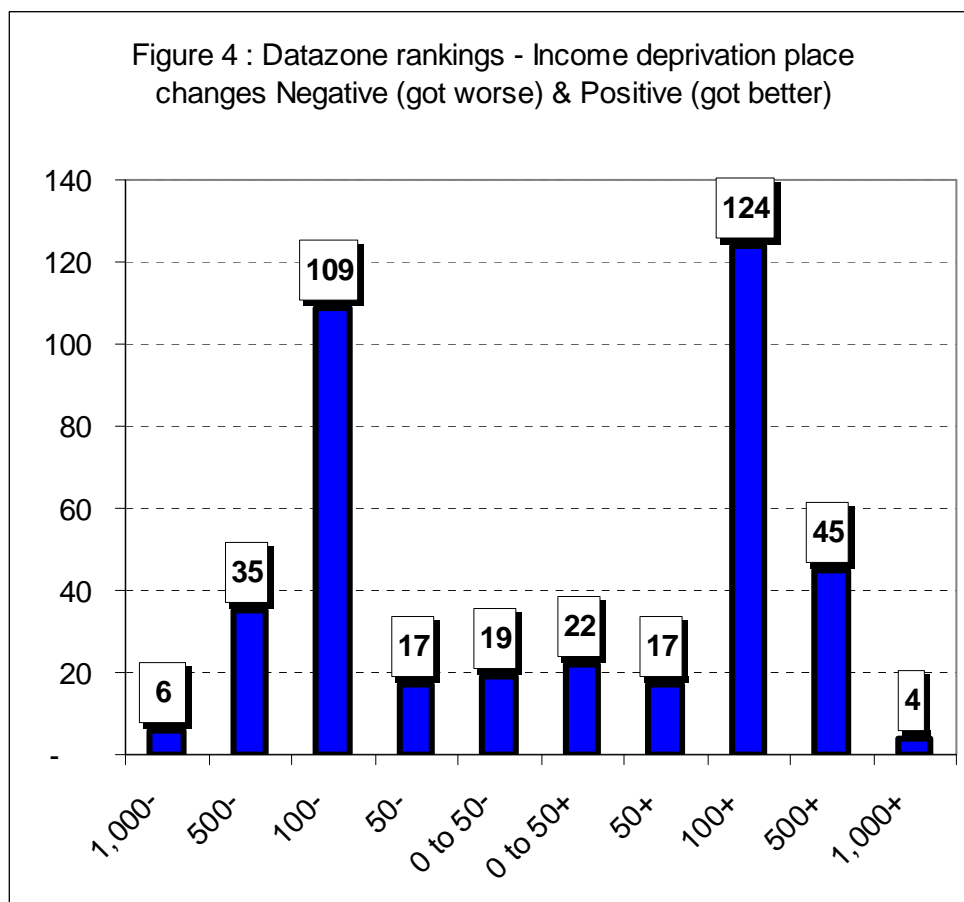
| Datzone | Income domain rank 2009 | Income deprivation rate 2009 |
|---------------------------|--------------------------------|-------------------------------------|
| Whitlawburn North | 35 | 65.0 |
| Rutherglen West | 102 | 55.0 |
| Whitlawburn South | 108 | 55.0 |
| Fairhill North East | 182 | 50.0 |
| Westburn | 189 | 49.0 |
| Whitehill West | 297 | 45.0 |
| Springhall West | 298 | 45.0 |
| Hillhouse East | 335 | 44.0 |
| Hareleeshill Central | 342 | 44.0 |
| Rutherglen Central | 412 | 42.0 |
| Hillhouse South West | 426 | 41.0 |
| Wellhall North | 437 | 41.0 |
| Strutherhill North East | 449 | 41.0 |
| High Blantyre North East | 459 | 41.0 |
| Whitehill South | 462 | 41.0 |
| Fairhill North West | 466 | 40.0 |
| Strutherhill West | 497 | 40.0 |
| Rigside - Douglas Water | 502 | 40.0 |
| Strutherhill North West | 507 | 40.0 |
| Blantyre East | 509 | 40.0 |
| Fernhill Central | 511 | 40.0 |
| Auchinraith North | 533 | 39.0 |
| Udston Central | 553 | 39.0 |
| Whitehill North | 633 | 37.0 |
| Fernhill North | 638 | 37.0 |
| High Burnside North | 642 | 38.0 |
| Burnhill | 647 | 37.0 |
| Hillhouse Central | 684 | 36.0 |
| Kirkmuirhill South | 725 | 35.0 |
| Strutherhill East | 730 | 35.0 |
| Rutherglen North | 735 | 35.0 |
| Lesmahagow South | 741 | 36.0 |
| Laighstonehall North East | 742 | 35.0 |
| Drumreoch | 760 | 35.0 |
| Udston North East | 762 | 35.0 |
| Kirkmuirhill Central | 783 | 34.0 |
| High Blantyre South | 786 | 35.0 |
| Fernhill South | 790 | 36.0 |
| Cathkin South | 806 | 35.0 |
| Bent South | 846 | 34.0 |
| Eddlewood North | 851 | 34.0 |
| Carstairs Junction | 868 | 33.0 |
| Smyllum Park | 874 | 33.0 |
| Cambuslang Centre | 892 | 33.0 |
| Burnbank South | 898 | 33.0 |
| Hareleeshill East | 901 | 33.0 |
| Drumlaw | 953 | 32.0 |
| Cadzow North | 956 | 33.0 |
| Douglas Central | 957 | 32.0 |
| Blantyre Central | 965 | 32.0 |

Between the SIMD2006 and SIMD2009 a total of 187 South Lanarkshire datazones saw their ranking worsen with 211 seeing their rankings improve.

Figure 4 shows the number of datazones whose ranking had moved by various places between the SIMD2006 and SIMD2009 in relation to Income deprivation.

As this figure shows, 6 datazones saw their rankings worsen by over 1,000 places, 35 by between 500 and 999 places and 109 by between 100 and 499 places. At the other end, 4 datazones saw their rankings improve by over 1,000 places, 45 by between 500 and 999 places and 124 by between 100 and 499 places.

The six which saw their rankings worsen by over 1,000 places were Markethill, Carluke North East, Meikle Earnock North, Stonehouse East Mains, Gallowhill East, and Carluke South West. The four which saw their rankings improve by over 1,000 places were Newbigging, Strathaven Central, Chatelherault, and Stonefield East.



DATAZONE - HEALTH DEPRIVATION

The 2009 Scottish Index of Multiple Deprivation Health domain was compiled from the following seven indicators:-

- Standardised Mortality Rate 2004-2007
- Hospital episodes related to alcohol use 2004-2007
- Hospital episodes related to drug use – 2004-2007
- Comparative Illness Factor – 2008
- Emergency admissions to hospital – 2004-2007
- Proportion of population being prescribed drugs for anxiety, depression or psychosis – 2007
- Proportion of live singleton births of low birth weight – 2004-2007

In the SIMD2009, South Lanarkshire had 8 datazones in the worst 5% in Scotland for Health deprivation and 29 in the 15% most Health & Disability deprived areas in Scotland.

South Lanarkshire accounted for 6.1% of all datazones in Scotland but only 5.8% of all those in the worst 15% in terms of Health deprivation. It also had only 3 areas in the least health deprived 5% of areas in Scotland and 39 in the 15% least health deprived areas.

Table 15 shows the number of South Lanarkshire datazones in the worst 15% of datazones in Scotland for Health & Disability deprivation in the SIMD2009. The ones highlighted in Yellow were within the 5% most Health deprived areas in Scotland and the ones in Green in the 10% most deprived areas.

Rutherglen West was ranked 65th worst in Scotland in terms of Health deprivation under the SIMD2009. Next came Whitlawburn North, ranked 79th worst, followed by Springhall West, 123rd worst, Whitlawburn South, 130th worst, and High Blantyre North East, 139th worst.

The least Health deprived areas in South Lanarkshire were Strathaven West – 112th least Health deprived area in Scotland - Hairmyres West (135th least), Kittinghside West (291st), Mossneuk South West (331st) and Kittinghside East (360th least Health deprived).

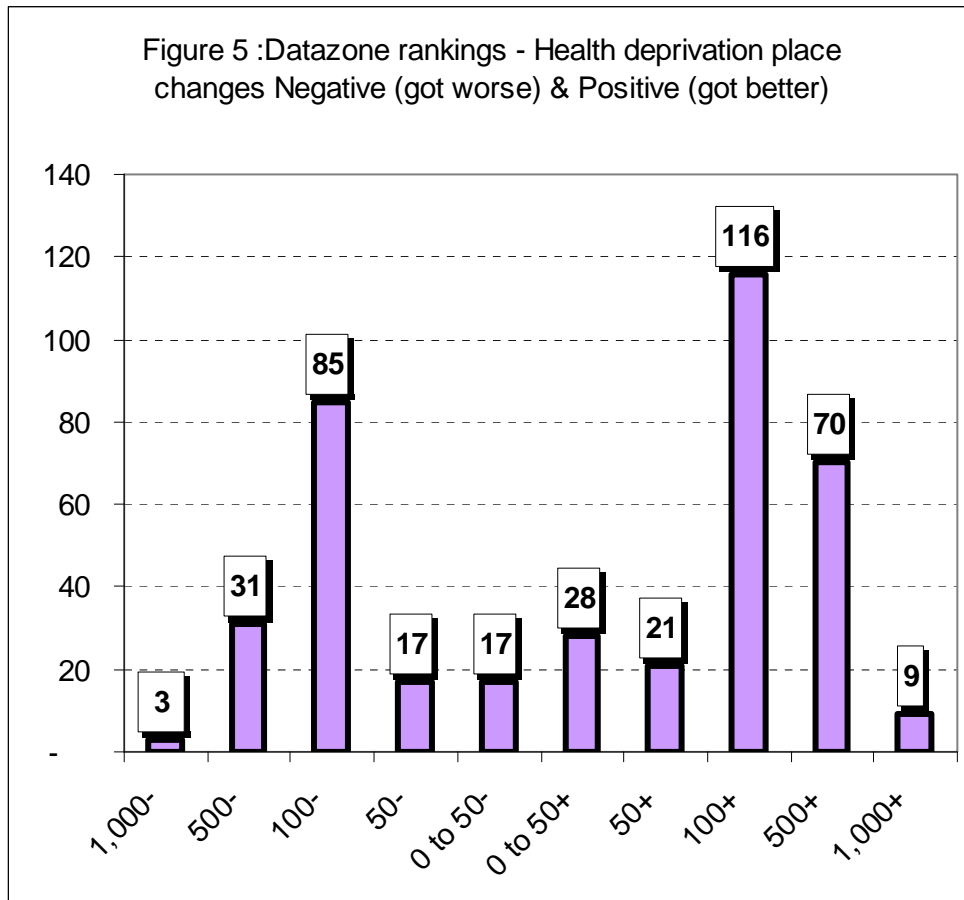
Comparing the rankings of the 398 datazones for Health Deprivation under both the SIMD2006 and SIMD2009 shows that 153 saw their rankings deteriorate (that is they became relatively more Health deprived) and 245 datazones improved their rankings.

Figure 5 shows the number of datazones whose ranking had moved by various places between the SIMD2006 and SIMD2009 in relation to Health deprivation.

Table 15: South Lanarkshire datazones in worst 15% for Health deprivation

| Datazone | Health domain rank 2009 |
|---------------------------|------------------------------------|
| Rutherglen West | 65 |
| Whitlawburn North | 79 |
| Springhall West | 123 |
| Whitlawburn South | 130 |
| High Blantyre North East | 139 |
| Rutherglen Central | 203 |
| Burnhill | 231 |
| Halfway South | 256 |
| Whitehill West | 326 |
| Fernhill Central | 328 |
| Clincarthill North | 335 |
| High Burnside North | 366 |
| Udston North East | 375 |
| Hillhouse East | 418 |
| Laighstonehall North East | 427 |
| Westburn | 435 |
| Wellhall North | 474 |
| Strutherhill West | 478 |
| Hillhouse South West | 480 |
| Drumreoch | 490 |
| Strutherhill North West | 498 |
| Strutherhill North East | 501 |
| Fairhill North East | 506 |
| Hareleeshill East | 532 |
| Hareleeshill Central | 537 |
| Cathkin North | 555 |
| Arden | 580 |
| Strutherhill South West | 595 |
| Whitehill South | 648 |
| Spittal West | 654 |
| Cambuslang Centre | 661 |
| Blantyre East | 687 |
| Carluke East | 711 |
| Clydesmill South | 716 |
| Stonefield West | 719 |
| Auchinraith North | 735 |
| Udston Central | 745 |
| Whitehill North | 749 |
| Wellside West | 774 |
| Fernhill North | 779 |
| Burnbank South | 809 |
| Flemington East | 824 |
| Fernhill South | 839 |
| Rutherglen North | 860 |
| High Blantyre South | 886 |
| Howieshill | 890 |
| The Village | 923 |
| Clydeford East | 936 |
| Clydesbridge | 970 |
| Cathkin Braes | 971 |

As this figure shows, 3 datazones saw their rankings deteriorate by over 1,000 places, 31 by between 500 and 999, and 85 by between 100 and 499. A total of 9 saw their rankings improve by over 1,000 places, 70 by between 500 and 999 places, and 116 by between 100 and 499 places.



The three datazones which saw their rankings deteriorate by over 1,000 places between the SIMD2006 and SIMD2009 were Lindsayfield East, Bardykes North, and Eastfield North. The nine which saw their rankings improve by over 1,000 places were Torheads, Kirkland North, Strathaven South, Sandford, Carluke North East, Strathaven Central, Castlebank, Meikle Earnock West, and Bankhead-New Lanark.

DATAZONE – EDUCATION, SKILLS & TRAINING DEPRIVATION

There were five indicators used to compile the rankings of datazones in relation to Education, Skills & Training deprivation in the Scottish Index of Multiple Deprivation in 2009. These were:-

- School pupil absences 2006-2007 & 2007-2008
- Pupil performance on SQA at Stage 4 – 2005-2006 to 2007-2008
- Working age people with no qualifications – 2001 Census
- 17-21 year olds enrolled into Higher Education 2005-2006 to 2007-2008
- People aged 16-18 not in Full Time Education, Employment or training; School leavers, 2006-07 & 2007-08 and DfWP benefit claimants 2007 and 2008

South Lanarkshire had 26 datazones in the most deprived 5% in Scotland for Education, Skills & Training deprivation and 43 in the most deprived 15% in the SIMD2009. South Lanarkshire accounted for 6.1% of all datazones in Scotland but 6.4% of all those in the most deprived 15% in terms of Education, Skills and Training deprivation.

This is the domain where the largest number of datazones in South Lanarkshire was in the worst 5% and 15% in Scotland in the SIMD2009.

South Lanarkshire also had 9 datazones in the least 5% Education, Skills & Training deprived areas in Scotland and 52 in the least 15% deprived areas for Education, Skills & Training. It accounted for 5.3% of the 15% least deprived datazones for Education, Skills and Training in the SIMD2009.

Table 16 shows the datazones in South Lanarkshire in the SIMD2009 that were within the 15% most deprived for Education, Skills & Training in Scotland. The ones highlighted in Yellow were within the 5% most Education, Skills & Training deprived areas in Scotland and the ones in Green in the 10% most deprived areas.

Strutherhill West was the 8th most deprived area in Scotland in terms of Education, Skills & Training in the SIMD2009. Welhall North was ranked 26th worst, followed by Fairhill North East (30th), Lesmahagow South (42nd), Rutherglen West (44th), and Whitlawburn North (78th).

The least Education, Skills & Training deprived areas in South Lanarkshire in the SIMD2009 were Thorntonhall – 54th least Education deprived area in Scotland - Cambuslang North (172nd), Uddingston West (189th), Stewartfield South (214th), and College Milton-Peel Park, the 216th least Education deprived area in Scotland.

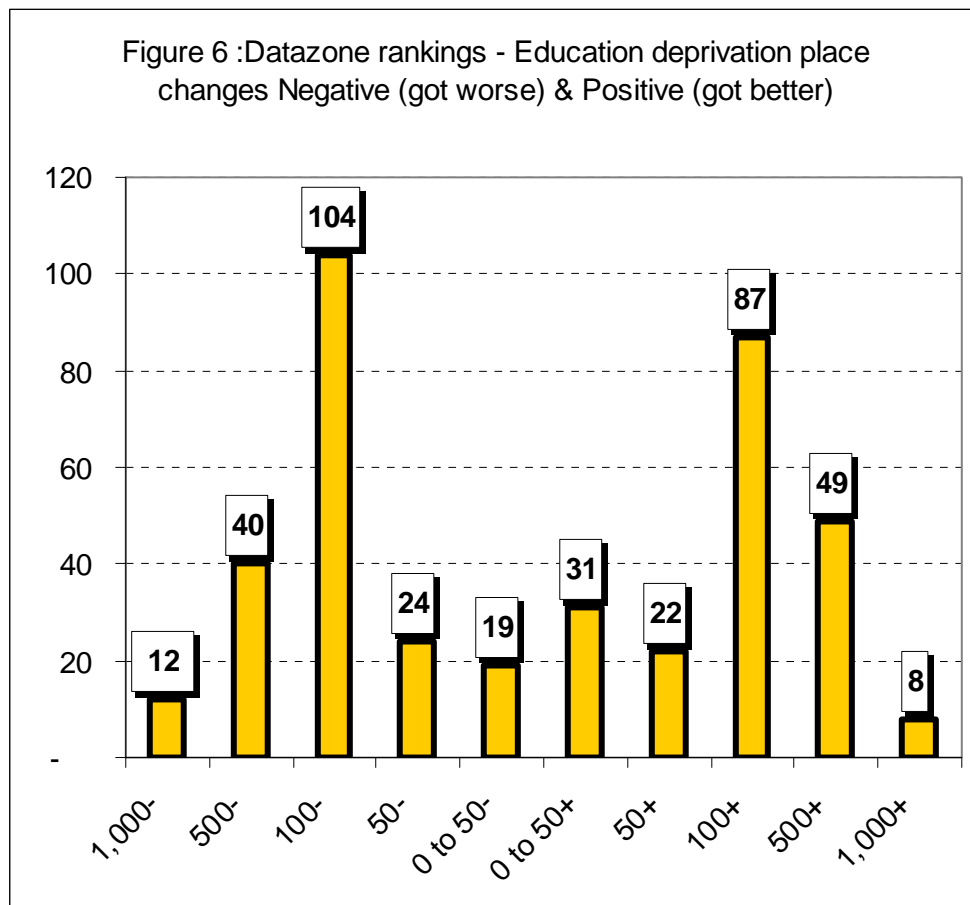
Table 16: South Lanarkshire datazones in worst 15% for Education deprivation

| Datzone | Education, Skills and Training domain 2009 |
|---------------------------|---|
| Strutherhill West | 8 |
| Wellhall North | 26 |
| Fairhill North East | 30 |
| Lesmahagow South | 42 |
| Rutherglen West | 44 |
| Whitlawburn North | 78 |
| Laighstonehall North East | 114 |
| Hillhouse East | 132 |
| Strutherhill North West | 156 |
| Whitehill South | 178 |
| Hareleeshill East | 220 |
| Fairhill North West | 235 |
| Whitehill North | 237 |
| Drumreoch | 253 |
| Forth Central | 270 |
| Whitehill West | 275 |
| Strutherhill North East | 287 |
| Coalburn | 289 |
| Clydeford East | 293 |
| Burnbank South | 299 |
| Hareleeshill North | 303 |
| Hillhouse South West | 306 |
| Udston North East | 310 |
| Eddlewood North | 312 |
| High Blantyre North East | 321 |
| Westburn | 323 |
| Forth North | 359 |
| Douglas Central | 367 |
| Fernhill Central | 368 |
| Strutherhill East | 380 |
| Wellside West | 388 |
| Kirkmuirhill South | 396 |
| Udston Central | 418 |
| Auchinraith North | 424 |
| Whitlawburn South | 449 |
| Strutherhill South East | 458 |
| High Burnside North | 461 |
| Muirhead East | 465 |
| Law North | 495 |
| Rigside - Douglas Water | 524 |
| Rutherglen Central | 562 |
| Rutherglen North | 593 |
| Burnhill | 610 |
| Bent South | 653 |
| Douglas Park | 654 |
| Turfholm | 699 |
| Stonehouse North East | 719 |
| Blantyre East | 720 |
| Cadzow North | 762 |
| Fernhill North | 763 |
| Eddlewood South | 765 |
| Crawforddyke Central | 811 |
| Eddlewood Central | 812 |
| Fernhill South | 832 |
| Kirkfieldbank | 874 |
| Spittal West | 922 |
| Wellhall South | 929 |
| Cathkin South | 930 |
| Spittal East | 931 |
| Smyllum Park | 936 |
| Clydesmill North | 957 |
| Burnside West | 962 |
| Hareleeshill Central | 967 |

Comparing the rankings of the 398 datazones for Education, Skills & Training Deprivation under both the SIMD2006 and SIMD2009 shows that 199 datazones saw their rankings deteriorate, two remained the same (Garrion Bridge and Spittal West) and 197 datazones improved their rankings.

Figure 6 shows the number of datazones whose ranking had moved by various places between the SIMD2006 and SIMD2009 in relation to Education, Skills & Training deprivation.

As this figure shows, 12 datazones saw their rankings deteriorate by over 1,000 places, 40 by between 500 and 999 places and 104 by between 100 and 499 places. A total of 8 saw their rankings improve by over 1,000 places, 49 by between 500 and 999 places, and 87 by between 100 and 499 places.



The twelve areas which saw their ranking worsen by over 1,000 places were Clydesbridge, Draffan – Hazelbank, East Kilbride Village, Hamilton Park, Nemphlar – Cleghorn, Strathaven North Central, Gallowflat North, Kirkton Gate, Brockettsbrae-Broken Cross, Auchengray-Braehead, Craigneith North, and Strathaven Central.

The eight areas which saw their rankings improve by over 1,000 places were St Leonards South East, Biggar South, Nerston, Earnock North, Cathkin North, Bankhead North East, Cathkin Braes, and The Murray South East.

DATAZONE – ACCESS TO SERVICES DEPRIVATION

The Access to Services deprivation domain in the Scottish Index of Multiple Deprivation 2009 was derived from nine indicators. These were:-

- Drive time to a GP
- Drive time to a petrol station
- Drive time to a Post Office
- Drive time to shopping facilities
- Drive time to a Primary school
- Drive time to a Secondary school
- Public transport time to a GP
- Public transport time to a Post Office
- Public transport time to shopping facilities

In the SIMD2009 South Lanarkshire had 9 datazones in the 5% most deprived areas in Scotland in relation to Geographic Access to Services deprivation and 22 in the worst 15%. South Lanarkshire accounted for 6.1% of all datazones in Scotland but only 4.1% of all those in the worst 15% in terms of Access to Services deprivation.

It also had 7 datazones in the 5% least deprived areas in Scotland in respect of Geographic Access to Services deprived in Scotland and 59 in the 15% of datazones which were the least Geographic Access to Services deprived in Scotland.

Table 17 shows the number of South Lanarkshire datazones in the 15% most deprived datazones in Scotland in respect of Geographic Access to Services. The ones highlighted in Yellow were within the 5% most Geographic Access to Services deprived areas in Scotland and the ones in Green in the 10% most deprived areas.

Auchengray-Braehead was the most Geographic Access to Services deprived area in South Lanarkshire under the SIMD2009 – and the 64th most deprived area in Scotland. Drumclog was the 99th most Geographic Access to Services deprived area in Scotland, followed by Dolphinton-Elsrickle (112th) and Douglas South (198th).

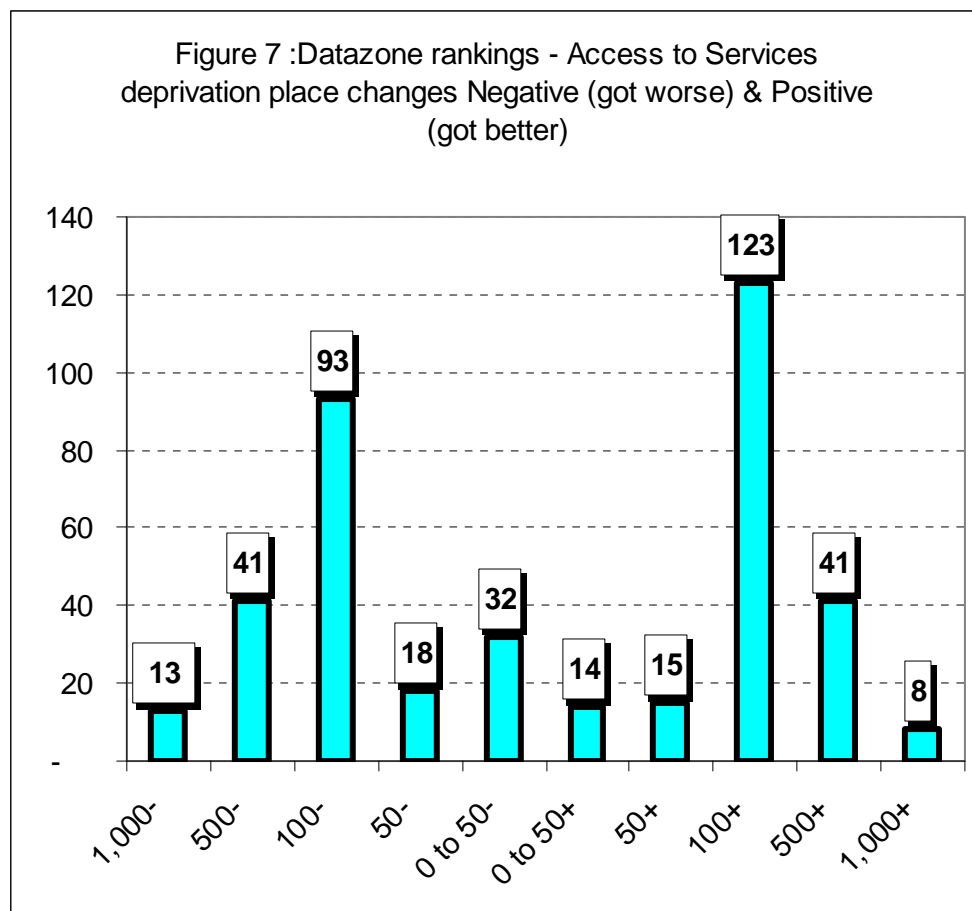
The least Geographic Access to Services deprived area in South Lanarkshire in the SIMD2009 was Burnbank South – the 30th least Geographic Access to Services area in Scotland. Next came Rutherglen Central (66th least), Cambuslang Centre (78th), and Lesmahagow East (98th).

Table 17: South Lanarkshire datazones in the 15% most Geographic Access to Services deprived in Scotland.

| Datazone | Geographic Access domain rank 2009 |
|----------------------------|---|
| Auchengray-Braehead | 64 |
| Drumclog | 99 |
| Dolphinton - Elsrickle | 112 |
| Douglas South | 198 |
| Libberton - Thankerton | 213 |
| Roberton - Sandilands | 238 |
| Crawford | 245 |
| Birkwood-Dalquandy | 274 |
| Sandford | 297 |
| Wilsontown - Blackmoss | 367 |
| Pettinain - Whitelees | 381 |
| Abington - Lamington | 411 |
| Newbigging | 455 |
| Brocketsbrae-Broken Cross | 494 |
| Draffan - Hazelbank | 514 |
| Glassford | 521 |
| Netherburn | 576 |
| Stonebyres | 578 |
| Auldhouse | 613 |
| Thorntonhall | 617 |
| Limekilnburn | 619 |
| Garrion Bridge | 642 |
| College Milton - Peel Park | 674 |
| Kittochside West | 676 |
| Biggar North | 679 |
| Kilncadzow | 707 |
| Coulter- Biggar Park | 731 |
| Auldtoun-West Toun | 756 |
| Symington | 761 |
| Nemphlar - Cleghorn | 763 |
| Braidwood | 773 |
| Yieldshields | 815 |
| Rogerton - Nerston | 838 |
| Stewartfield North | 858 |
| Crossford | 876 |
| Kittochside East | 912 |
| Canderside-Ashgill | 924 |
| Gardenhall - Jackton | 929 |
| Earnock South | 934 |
| Stewartfield Central | 961 |

Comparing the rankings of the 398 datazones for Geographic Access to Services Deprivation under both the SIMD2006 and SIMD2009 shows that 197 saw their rankings deteriorate (that is they became relatively more Geographic Access to Services deprived) and 201 datazones improved their rankings.

Figure 7 shows the number of datazones whose ranking had moved by various places between the SIMD2006 and SIMD2009 in relation to Geographic Access to Services deprivation.



As this figure shows, 13 datazones saw their rankings deteriorate by over 1,000 places, 41 by between 500 and 999 places, and 93 by between 100 and 499 places. A total of 8 saw their rankings improve by over 1,000 places, 41 by between 500 and 999 places, and 123 by between 100 and 499 places.

The 13 datazones which saw their ranking deteriorate by over 1,000 places were Bankhead-New Lanark, Strathaven South East, Blantyre West, Maxwellton, Kirkmuirhill West, Barnhill, Braidwood, Blantyre South West, Douglas North, Strathaven South, Strathaven North East, Brankumhall, and Gallowhill North.

The eight areas which saw their rankings improve by over 1,000 places were Newlandsmuir South West, Lindsayfield, Crosshouse-Lindsayfield, Crosshouse West, Lindsayfield South, Burnside, Springhall East, Lindsayfield East, and Whitlawburn South.

DATAZONE -CRIME DEPRIVATION

The Scottish Index of Multiple Deprivation for 2009 used five indicators to derive the rankings in relation to Crime deprivation. These were:-

- Recorded crimes of violence – 2007-2008
- Recorded domestic housebreakings – 2007-2008
- Recorded acts of vandalism – 207-2008
- Recorded drug offences – 2007-2008
- Recorded minor assaults – 2007-2008

South Lanarkshire had 13 datazones in the 5% most Crime deprived areas in Scotland and 33 in the 15% most Crime deprived in Scotland in the SIMD 2009. South Lanarkshire accounts for 6.1% of all Scottish datazones but accounted for 4.7% of those in the 15% most Crime deprived in Scotland.

It also had 21 datazones in the 5% least Crime deprived areas in Scotland – the most datazones in the 5% least category for any domain and 49 in the least deprived 15% for Crime deprivation – 5% of the Scottish total.

Table 18 shows the number of South Lanarkshire datazones in the 15% most deprived datazones in Scotland in respect of Crime. The ones highlighted in Yellow were within the 5% most deprived areas in relation to Crime deprivation in Scotland and the ones in Green in the 10% most deprived areas.

East Kilbride Town Centre was ranked the 29th most Crime deprived area in Scotland under the SIMD2009. Next came Hamilton Park (ranked 50th worst), followed by Rutherglen Central (67th worst), Fairhill North East (83rd) and Douglas Park (108th).

The Stanmore datazone was ranked the 12th equally least Crime deprived area in Scotland. Next came Earnock South (55th least Crime deprived in Scotland), Thorntonhall (56th), Sandford (65th), and Kittochside West (71st).

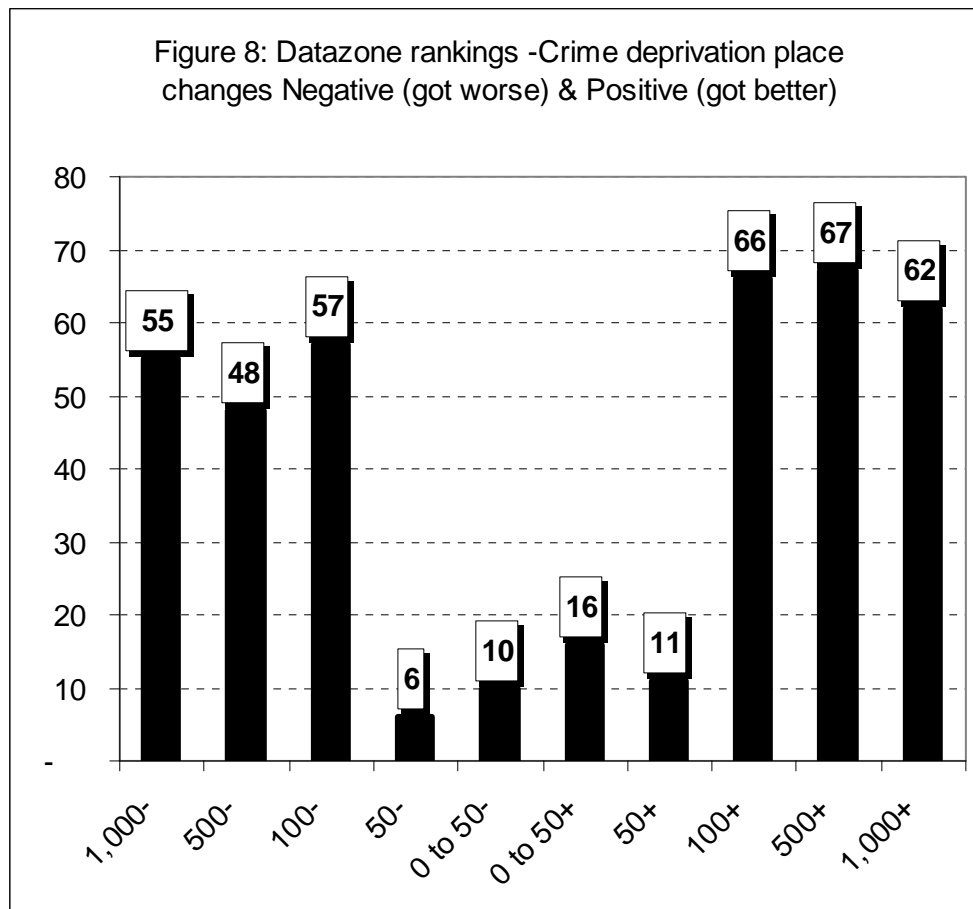
Comparing the rankings of the 398 datazones for Geographic Access to Services Deprivation under both the SIMD2006 and SIMD2009 shows that 176 saw their rankings deteriorate (that is, they became relatively more Geographic Access to Services deprived), one remained with the same ranking – Forth North, ranked 998 - and 221 datazones improved their rankings.

Figure 8 shows the number of datazones whose ranking had moved by various places between the SIMD2006 and SIMD2009 in relation to Geographic Access to Services deprivation.

Table 18: South Lanarkshire datazones in 15% worst for Crime deprivation

| Datzone | SIMD Crime 2009 rank |
|----------------------------|-----------------------------|
| East Kilbride Town Centre | 29 |
| Hamilton Park | 50 |
| Rutherglen Central | 67 |
| Fairhill North East | 83 |
| Douglas Park | 108 |
| Silvertonhill North East | 114 |
| Rutherglen North | 151 |
| Wellhall North | 209 |
| Smyllum Park | 211 |
| Fairhill North West | 216 |
| Rutherglen West | 251 |
| Burnhill | 297 |
| Lanark Central | 310 |
| Newlandsmuir South Central | 341 |
| Hillhouse East | 355 |
| Rigside - Douglas Water | 359 |
| Udston West | 373 |
| Whitlawburn North | 379 |
| High Blantyre South | 400 |
| Eddlewood North | 426 |
| West Mains East | 439 |
| Strutherhill North East | 480 |
| Larkhall West | 483 |
| Drumlaw | 490 |
| Strutherhill North West | 518 |
| Forth Central | 521 |
| Whitehill West | 536 |
| Hamilton Centre North | 560 |
| Udston South East | 582 |
| Cathkin South | 598 |
| Hillhouse Central | 622 |
| Burnbank South | 633 |
| Meikle Earnock West | 640 |
| High Burnside North | 652 |
| Fernhill Central | 695 |
| Cambuslang Centre | 738 |
| Blantyre West | 756 |
| The Village | 801 |
| Blantyre East | 825 |
| Hamilton Old Cross | 877 |
| Drumreoch | 892 |
| Hamilton West | 910 |
| Carluke Central | 952 |
| High Blantyre North East | 954 |
| Udston Central | 969 |
| Clydeford East | 973 |

As this figure shows, 55 datazones saw their rankings deteriorate by over 1,000 places, 48 by between 500 and 999 places, and 57 by between 100 and 499 places. A total of 62 saw their rankings improve by over 1,000 places, 67 by between 500 and 999 places, and 66 by between 100 and 499 places.



A total of 10 datazones actually saw their rankings in relation to Crime deprivation worsen between the SIMD2006 and SIMD2009 by over 2,000 places. In the case of Blackwood South and Merryton West, their rankings deteriorated by over 3,000 places. The other eight - Udston South East, Lindsayfield East, High Crosshill, Belstane, Drumlaw, Eddlewood North, Springhall and Burnside all saw their rankings deteriorate by over 2,000 places.

Similarly, there were 10 datazones where their rankings in relation to Crime deprivation improved between the SIMD2006 and SIMD2009 by over 2,000 places. In the case of Larkhall Central, its ranking improved from 1,078 worst in Scotland to being 5,109th worst – an improvement of 4,031 places. Strathaven East also improved its rankings by over 3,000 places with Newlandsmuir West, Westwood South, Cathkin Braes, East Mains East, Crawforddyke North East, Wellside East, Torheads, and Newlands Farm all seeing their rankings improve by over 2,000 places.

DATAZONE - HOUSING DEPRIVATION

The Housing domain has not changed since it was first produced for the SIMD2004 and is still based on indicators from the 2001 Census of Population. This means that the SIMD2006 and SIMD2009 figures are identical to those used in the SIMD2004.

The two indicators used to determine the rankings of datazones in all the editions of the Scottish Index of Multiple Deprivation that have been produced are:-

- Persons in households that are overcrowded – 2001 Census
- Persons in households without central heating – 2001 Census

South Lanarkshire had one datazone (Rutherglen Central) in the worst 5% in Scotland for Housing deprivation and 67 in the worst 15% in the SIMD2009. South Lanarkshire accounted for 6.1% of all datazones in Scotland but 6.9% of all those in the worst 15% in terms of Housing deprivation.

It also had 21 datazones in the 5% least Housing deprived in Scotland and 60 in the 15% of datazones which were the least Housing deprived in Scotland. This is the “best” showing for South Lanarkshire datazones under any domain.

Table 19 shows the number of South Lanarkshire datazones in the 15% most deprived in relation to Housing deprived datazones in Scotland. The ones highlighted in Yellow were within the 5% most deprived areas in relation to Housing deprivation in Scotland and the ones in Green in the 10% most deprived areas.

Rutherglen Central had the 242nd highest level of Housing deprivation in Scotland in the SIMD2009. Next came Udston North East (489th worst), Wheatlands Central (550th worst), Clincarthill North (574th worst), and High Burnside North (625th worst).

Table 19: South Lanarkshire datazones in 15% most deprived for Housing

| Datazone | Housing domain rank 2004, 2006 and 2009 |
|----------------------------|--|
| Rutherglen Central | 242 |
| Udston North East | 489 |
| Wheatlands Central | 550 |
| Clincarthill North | 574 |
| High Burnside North | 625 |
| Rutherglen West | 639 |
| Hareleeshill East | 667 |
| Clydesmill North | 693 |
| Fairhill North West | 696 |
| Hillhouse Central | 721 |
| Hillhouse East | 755 |
| Rutherglen North | 775 |
| Bankhead West | 789 |
| Uddingston South East | 811 |
| Blantyre Central | 824 |
| Stonefield West | 829 |
| Wellside West | 842 |
| High Blantyre South | 858 |
| Burnbank South | 863 |
| Drumreoch | 880 |
| Springhall West | 884 |
| Bent South | 887 |
| Fernhill South | 887 |
| Wellhall South | 892 |
| Bothwell North | 923 |
| High Blantyre West | 928 |
| Craigknowe East - Kylepark | 947 |
| Arden | 949 |
| Udston Central | 962 |

Bothwell Castle had the lowest level of Housing deprivation in South Lanarkshire – ranking it the 37th least Housing deprived datazone in Scotland. Next came Lindsayfield South (the 63rd least Housing deprived datazone in Scotland, followed by Thorntonhall (94th least Housing deprived), and College Milton-Peel Park (100th least Housing deprived).

COMMUNITY REGENERATION & NEIGHBOURHOOD MANAGEMENT AREAS

The Council and community planning partners have identified a number of areas within South Lanarkshire for focused area and neighbourhood regeneration. This section looks at the relative rankings of datazones that roughly approximate to these areas between the SIMD2006 and SIMD2009.

There are five Community Regeneration Areas covering areas in Cambuslang, Rutherglen, Blantyre, Hamilton and Larkhall.

- ❖ Cambuslang has shown a relative improvement but all of its datazones remain in the worst 15% in Scotland
- ❖ Rutherglen shows a relative improvement, with a fifth of its datazones now outwith the worst 15% in Scotland
- ❖ Blantyre shows a relative improvement, with over a quarter of its datazones now outwith the worst 15% in Scotland
- ❖ Hamilton has seen some relative improvement, a tenth of its datazones are now outwith the worst 15% Scottish datazones and another quarter, while remaining in the worst 15%, have improved their relative position
- ❖ Larkhall has seen a relative worsening of its datazones, nearly half seeing their situation worsen and only one showing relative improvement, though all the Larkhall CRA datazones remain in the worst 15%

There are fifteen designated Neighbourhood Management Areas in South Lanarkshire

- ❖ Burnhill, Carstairs Junction, Cathkin, Fairhill, Glespin, Rigside and Whitlawburn have all seen their relative situation remain unchanged with those datazones in the worst 15% retaining their position – and in Burnhill and Whitlawburn remaining in the worst 5% of datazones in Scotland
- ❖ Cairns has seen a relative improvement
- ❖ Fernhill has seen a relative improvement although all areas remain in the worst 15% in Scotland
- ❖ Forth has seen a relative improvement with no datazones now in the worst 15% in Scotland
- ❖ Hillhouse datazones have seen a slight improvement in their relative position
- ❖ Low Waters has seen some relative improvement but most of its datazones remain in the worst 15% in Scotland
- ❖ The situation in Priestfield is mixed, with some improvement and some worsening
- ❖ Whitehill has seen an improvement in the relative position of its datazones
- ❖ Strutherhill has seen a significant worsening in its position, with all its datazones now in the worst 10% in Scotland

Looking at the situation in detail, for the Community Regeneration Areas:-

Cambuslang

There were seven Cambuslang datazones in the worst 15% in Scotland in 2006. Of these, three were in the worst 5% in Scotland, another three in the worst 6-10% and the remaining datazone, Cambuslang Centre, in the worst 11-15%. While none of these datazones has dropped out of the worst 15% category in the 2009 SIMD, three have improved their relative position, moving from within the worst 6-10% to be in the worst 11-15% (Wellside West, Halfway South, and Clydeford East). The other four datazones have remained in the same position in the 2009 version of the index.

Rutherglen

There were 15 Rutherglen datazones in the worst 15% in Scotland in 2006. Four were in the worst 5% and another four in the worst 6-10%, with the remaining seven in the worst 11-15%. Three of the Rutherglen datazones have dropped out of the worst 15% of datazones in 2009, although they remain in the worst 20% (Drumlaw, Spittal West, and Clydesmill South).

Eight of the 12 remaining Rutherglen datazones stay in the same position in the index in 2009, while three have improved their position and one (High Burnside North) has worsened in its relative position, moving from the worst 11-15% to the worst 6-10%.

Blantyre

Blantyre had seven datazones in the worst 15% in Scotland in 2006, including two in the worst 5% and three in the worst 6-10%.

In the 2009 version of the SIMD two Blantyre datazones have fallen out of the worst 15% - Blantyre Central and Stonefield West. Two others, High Blantyre South and Auchinraith North, have moved from the worst 6-10% to the worst 11-15%. The three remaining datazones are unchanged in their relative positions.

Hamilton

There were 17 Hamilton datazones in worst 15% in Scotland in 2006, with four in the worst 5% in Scotland and another nine in the worst 6-10%. Two Hamilton datazones, Eddlewood South and Meikle Earnock West, have improved their relative position such that they have dropped out of the worst 15% of datazones (and, indeed, the worst 20%) in the SIMD 2009. Four other datazones, while remaining in the worst 15% in 2009, have improved their relative position with one, Whitehill North, moving from the worst 5% to the worst 6-10% and the others from the worst 6-10% to the worst 11-15%.

One datazone, Wellhall North, has worsened in its relative position, moving from the worst 6-10% to be in the worst 5% of datazones. The remaining ten Hamilton datazones have remained in the same position they occupied in the 2006 index.

Larkhall

Larkhall had seven of Scotland's worst 15% of datazones in the 2006 SIMD, although none were in the worst 5%. Four Larkhall datazones were in the worst 6-10% of datazones in Scotland.

Three of the Larkhall datazones remain in unchanged percentage bands in the 2009 SIMD and one, Strutherhill East, has moved from being in the worst 6-10% category to the 11-15% group. However three Larkhall datazones (Strutherhill South West, North West, and North East) have moved in the opposite direction, from the worst 11-15% group to the worst 6-10%.

Looking at the situation in detail, for the **Neighbourhood Management Areas**:-

Twenty-five of the 56 South Lanarkshire datazones in the worst 15% in Scotland in 2006 are also in the Council's Neighbourhood Management Areas (NMAs) - together with 11 datazones which were not in the worst 15% category in 2006. Of these 25 datazones, nine have improved in their relative positions, with one dropping out of the worst 15% category altogether, six moving from the worst 6-10% to the worst 11-15%, and two moving from the worst 5% to the worst 6-10%. Two of the 25 datazones have worsened in their relative positions, both moving from the worst 11-15% to the worst 6-10% group.

For seven of the NMAs – Burnhill, Carstairs Junction, Cathkin, Fairhill, Glespin, Rigside, and Whitlawburn – the relative position of their constituent datazones, in terms of the percentage point ranking bands in which they fall, remains unchanged between the 2006 and 2009 versions of the SIMD.

In the **Cairns NMA** one datazone featured in the worst 6-10% of datazones in 2006. This datazone, Wellside West, has improved in its relative position and is now in the worst 11-15% of datazones.

For the **Fernhill NMA**, all three of its datazones have improved their relative positions in the 2009 index with two moving from the worst 6-10% to the worst 11-15% (Fernhill South and Fernhill North) and one from the worst 5% to the worst 6-10% (Fernhill Central).

Only one of the three datazones comprising **Forth NMA** was in the worst 15% in Scotland in 2006 – Forth North – but this has now dropped out to the worst 16-20% category, alongside Forth Central, which has remained in the worst 16-20% from 2006 to 2009.

Of the five datazones in the **Hillhouse NMA**, only one – Hillhouse Central – has changed its relative position between the 2006 and 2009 indices, moving from the worst 6-10% to the worst 11-15%.

The **Low Waters NMA** had two of its three datazones in the worst 15% in Scotland in 2006 and one, Arden, has moved from the worst 6-10% to worst 11-15%. Cadzow North remains in the worst 11-15% of datazones in the 2009 index.

In **Priestfield NMA** the High Blantyre South datazone has moved from the worst 6-10% to the worst 11-15% group while the High Blantyre East datazone has moved up to be in the worst 20% of datazones.

In **Strutherhill NMA** the relative position of two of the four datazones has worsened, with Strutherhill South West and North East moving from the worst 11-15% to the worst 6-10% of datazones. The position of the other two datazones is unchanged.

Finally, one of the two datazones in the **Whitehill NMA** – Whitehill North - has improved its relative position, moving from the worst 5% of datazones to the worst 6-10%.

Appendix 1 – Indicators used in SIMD 2009

| DOMAIN | INDICATORS |
|---|--|
| EMPLOYMENT | <ul style="list-style-type: none"> ➤ Working age 12-month average of Job Seekers Allowance claimants in 2008. ➤ Working age recipients of Incapacity Benefit - August 2008 ➤ Working age recipients of Severe Disablement Allowance – August 2008 ➤ Compulsory New Deal participants not included in unemployment claimant counts - August 2008 |
| INCOME | <ul style="list-style-type: none"> ➤ Number of Working age adults receiving Income Support – August 2008 ➤ 60 plus residents receiving Guaranteed Pension Credit – August 2008 ➤ Children (under 15) dependent on a recipient of Income Support – August 2007 ➤ Adults receiving Job Seekers Allowance – April 2008 ➤ Children (under 15) dependent on a recipient of Job Seekers Allowance – August 2007. ➤ Number of adults & children in Tax Credit Families on low incomes – August 2006 |
| HEALTH | <ul style="list-style-type: none"> ➤ Standardised Mortality Rate 2004-2007 ➤ Hospital episodes related to alcohol use 2004-2007 ➤ Hospital episodes related to drug use – 2004-2007 ➤ Comparative Illness Factor – 2008 ➤ Emergency admissions to hospital – 2004-2007 ➤ Proportion of population being prescribed drugs for anxiety, depression or psychosis – 2007 ➤ Proportion of live singleton births of low birth weight – 2004-2007 |
| EDUCATION, SKILLS & TRAINING | <ul style="list-style-type: none"> ➤ School pupil absences 2006-2007 & 2007-2008 ➤ Pupil performance on SQA at Stage 4 – 2005-2006 to 2007-2008 ➤ Working age people with no qualifications – 2001 Census ➤ 17-21 year olds enrolled into Higher Education 2005-2006 to 2007-2008 ➤ People aged 16-18 not in Full Time Education, Employment or training; school leavers, 2006-07 & 2007-08 and DfWP benefit claimants 2007 and 2008 |

Appendix 1 – Indicators used in SIMD 2009 (continued)

| DOMAIN | INDICATORS |
|---------------------------|---|
| ACCESS TO SERVICES | <ul style="list-style-type: none"> ➤ Drive time to a GP ➤ Drive time to a petrol station ➤ Drive time to a Post Office ➤ Drive time to shopping facilities ➤ Drive time to a Primary school ➤ Drive time to a Secondary school ➤ Public transport time to a GP ➤ Public transport time to a Post Office ➤ Public transport time to shopping facilities |
| CRIME | <ul style="list-style-type: none"> ➤ Recorded crimes of violence – 2007-2008 ➤ Recorded domestic housebreakings – 2007-2008 ➤ Recorded acts of vandalism – 207-2008 ➤ Recorded drug offences – 2007-2008 ➤ Recorded minor assaults – 2007-2008 |
| HOUSING | <ul style="list-style-type: none"> ➤ Persons in households that are overcrowded – 2001 Census ➤ Persons in households without central heating – 2001 Census |

Appendix 2: Rankings of South Lanarkshire most deprived 15% datazones by domain

Black worst 5%, Red 6-10%, Yellow 11-15%, Pink 16-20%, White 21-80%, Heather 81-85%, Green 86-90%, Light blue 91-95%, Dark blue least deprived 5%

| Datzone | SIMD 2009 Income Rank (Weight = 28%) | SIMD 2009 Employment Rank (Weight = 28%) | SIMD 2009 Health Rank (Weight = 14%) | SIMD 2009 Education Rank (Weight = 14%) | SIMD 2009 Housing Rank (Weight = 2%) | SIMD 2009 Geographic Access Rank (Weight = 9%) | SIMD 2009 Crime Rank (Weight = 5%) | SIMD 2009 Overall Rank |
|---------------------------|---|---|---|--|---|---|---|------------------------------|
| Whitlawburn North | 35 | 159 | 79 | 78 | 1117 | 2063 | 379 | 46 |
| Rutherglen West | 102 | 344 | 65 | 44 | 639 | 4583 | 251 | 89 |
| Whitlawburn South | 108 | 229 | 130 | 449 | 1488 | 2302 | 994 | 139 |
| High Blantyre North East | 459 | 86 | 139 | 321 | 1275 | 4768 | 954 | 187 |
| Fairhill North East | 182 | 565 | 506 | 30 | 1446 | 2890 | 83 | 189 |
| Rutherglen Central | 412 | 124 | 203 | 562 | 242 | 6439 | 67 | 203 |
| Hillhouse East | 335 | 249 | 418 | 132 | 755 | 5168 | 355 | 237 |
| Springhall West | 298 | 141 | 123 | 1615 | 884 | 3093 | 1653 | 274 |
| Wellhall North | 437 | 435 | 474 | 26 | 1194 | 6229 | 209 | 300 |
| Westburn | 189 | 527 | 435 | 323 | 1428 | 2087 | 1192 | 305 |
| Whitehill West | 297 | 441 | 326 | 275 | 1077 | 3862 | 536 | 313 |
| Strutherhill West | 497 | 606 | 478 | 8 | 1967 | 2648 | 1431 | 338 |
| Fernhill Central | 511 | 412 | 328 | 368 | 1128 | 2476 | 695 | 366 |
| High Burnside North | 642 | 289 | 366 | 461 | 625 | 3484 | 652 | 386 |
| Strutherhill North West | 507 | 477 | 498 | 156 | 2536 | 4665 | 518 | 402 |
| Laighstonehall North East | 742 | 425 | 427 | 114 | 1671 | 2854 | 1856 | 419 |
| Burnhill | 647 | 378 | 231 | 610 | 1138 | 5581 | 297 | 433 |
| Strutherhill North East | 449 | 526 | 501 | 287 | 1521 | 5414 | 480 | 440 |
| Fairhill North West | 466 | 618 | 1077 | 235 | 696 | 2730 | 216 | 451 |
| Hillhouse South West | 426 | 670 | 480 | 306 | 1270 | 2285 | 1834 | 459 |
| Drumreoch | 760 | 364 | 490 | 253 | 880 | 4947 | 892 | 462 |
| Whitehill South | 462 | 554 | 648 | 178 | 1931 | 4100 | 1808 | 463 |
| Rigside - Douglas Water | 502 | 517 | 1248 | 524 | 2614 | 1953 | 359 | 505 |
| Udston North East | 762 | 444 | 375 | 310 | 489 | 5497 | 2336 | 506 |
| Udston Central | 553 | 488 | 745 | 418 | 962 | 5783 | 969 | 528 |
| Hareleeshill Central | 342 | 665 | 537 | 967 | 2028 | 2836 | 1742 | 533 |
| Lesmahagow South | 741 | 892 | 1574 | 42 | 1680 | 2138 | 1315 | 579 |
| Whitehill North | 633 | 1032 | 749 | 237 | 1558.5 | 2229 | 990 | 597 |
| Hareleeshill East | 901 | 805 | 532 | 220 | 667 | 2040 | 4020 | 607 |
| Blantyre East | 509 | 657 | 687 | 720 | 1364 | 6294 | 825 | 619 |
| Strutherhill South West | 993 | 319 | 595 | 1168 | 991 | 3136 | 1946 | 634 |
| Fernhill North | 638 | 699 | 779 | 763 | 1013 | 2580 | 1411 | 653 |
| Auchinraith North | 533 | 981 | 735 | 424 | 1435 | 4124 | 1745 | 682 |
| Rutherglen North | 735 | 825 | 860 | 593 | 775 | 5709 | 151 | 692 |
| Burnbank South | 898 | 761 | 809 | 299 | 863 | 6475 | 633 | 706 |
| Bent South | 846 | 462 | 1056 | 653 | 887 | 3444 | 3215 | 713 |
| Arden | 1278 | 414 | 580 | 1005 | 949 | 3695 | 1993 | 764 |
| Halfway South | 1143 | 620 | 256 | 1467 | 1417 | 3889 | 1254 | 772 |
| Hillhouse Central | 684 | 709 | 1101 | 1354 | 721 | 3259 | 622 | 779 |
| Cathkin South | 806 | 883 | 994 | 930 | 1688.5 | 2505 | 598 | 804 |
| Cambuslang Centre | 892 | 587 | 661 | 1357 | 1056 | 6427 | 738 | 809 |
| Cadzow North | 956 | 566 | 1188 | 762 | 1015 | 5081 | 1012 | 811 |
| High Blantyre South | 786 | 1026 | 886 | 1042 | 858 | 2812 | 400 | 817 |
| Strutherhill East | 730 | 1134 | 1303 | 380 | 1363 | 3382 | 1262 | 832 |
| Clydeford East | 988 | 1031 | 936 | 293 | 1162 | 5145 | 973 | 835 |
| Fernhill South | 790 | 1011 | 839 | 832 | 887 | 2216 | 2039 | 838 |
| Wellside West | 1260 | 811 | 774 | 388 | 842 | 5554 | 2145 | 884 |
| Douglas Central | 957 | 1101 | 1193 | 367 | 2724 | 2471 | 2623 | 908 |
| Eddlewood North | 851 | 1657 | 1060 | 312 | 1978 | 5042 | 426 | 930 |
| Cathkin North | 1427 | 516 | 555 | 1678 | 1688.5 | 3215 | 2455 | 933 |
| Smyllum Park | 874 | 909 | 1776 | 936 | 2317 | 4663 | 211 | 954 |
| Kirkmuirhill South | 725 | 1313 | 1493 | 396 | 2411 | 3925 | 2783 | 976 |