

Policy Briefing - Participation in Further Education in South Lanarkshire (May 2009)

The Central Research Unit has been given the remit of reviewing and scanning the environment that the council and its community planning partners operate within. As part of this process, the Unit has developed a series of Policy Briefings on issues relating to the interests of the council and the social, economic and policy environment in which it operates.

They are not intended to be for information only, but to provide background information on a topic of relevance to the Council and its partners with a focus on analysing and, where relevant, identifying issues arising from this work.

Their aim is to: -

- Promote consideration of issues arising out of an analysis of key statistics and trends
- Reflect on the issues and direction of emerging Government and Executive policies
- Deepen the council and partners' understanding and knowledge of issues.

This particular Policy Briefing contains the results of an analysis of ***Participation in Further Education in South Lanarkshire in 2007-08***. This summarises the overall South Lanarkshire situation and trends over time.

For further information on this subject contact: -

Alex Morton

Tel: 01698 453829

Email: alex.morton@southlanarkshire.gov.uk

SUMMARY

In 2007-08, there were 19,929 residents of South Lanarkshire participating in Further Education. Though this represented a fall of 779, or 3.8% on 2006-07 it is the 2nd highest figure since 2002-03.

11,184 of those participating in Further Education in South Lanarkshire were Women – 56.1% - and 8,745 (43.9%) were Men. Both these numbers were the 2nd highest – after 2006-07 – since 2002-03.

Over the 2006-07 to 2007-08 period, the number of Men participating in Further Education in South Lanarkshire fell by 132, or -1.5%. This compares to a fall of 647, or 5.5% in the number of Women in Further Education.

Since 2000-01 the numbers participating in Further Education have risen by 1,995, or 10.7%. The number of Women participating has increased by 11.5% (1,223) compared to a 9.5% rise (up 772) in the number of Men.

In 2007-08 it is estimated that around 7.7% of the 14 plus population of South Lanarkshire were participating in Further Education. This is down on the 8% figure for 2006-07 but is the 2nd highest figure since 2002-03.

In 2007-08 the Female participation rate in Further Education is estimated at 8.2% and the Male participation rate at 7.1%. Both show falls from their 2006-07 levels but are above the rates for each year since 2002-03. In every year since 2000-01 the participation rate for Men has been below that for Women.

In 2007-08, of those participating in Further Education, 47% (9,471) were aged 25-59. A further 21% (4,132) were aged 16 to 18 and a further 16% (3,248) were aged 19-24. A total of 1,866 – 9% were aged under 16 and 698 (3.5%) were aged 65 or over.

Over the 2006-07 to 2007-08 period the overall number participating in Further Education fell by 3.8% in South Lanarkshire. However over this period there was an increase in the numbers participating in the 16-18 and 19-24 age groups but declines in participation in all other age groups. There was a 4.8% rise in the numbers participating aged 19-24 and of 4.2% of those aged 16-18. There was a 27% fall in the numbers participating aged 65 & over and a 19% fall in the numbers participating aged under 16 as well as a 9% fall in the numbers age 60-64.

Over the 2000-01 to 2007-08 period the number rose by 10.7%. The numbers participating fell in only one age group – a fall of 0.5% in those aged 25-59. The numbers rose in all other age groups, ranging from a 113% rise in those aged 65 & over to a 23% rise in the numbers aged 60-64 and a 12% rise in the numbers aged 16 to 18. The number of under 16s participating rose by 5% over this period.

In 2007-08 the overall participation rate in Further Education was 7.7%. It is estimated that the highest participation rate in Further Education was amongst the 16 to 18 age group at 35%. The next highest rate was amongst those aged under 16 (at 23%) and 14% of those aged 19-24 were estimated to be participating in Further Education.

The lowest participation rate was amongst the 65 & over age group with 1.4% participating in Further Education, followed by a rate of 2.9% amongst those aged 60-64 and 6.3% of those aged 25 to 59.

In general, there has been a gradual rise in recent years in participation rates in the 16-18 and 19-24 year old age groups. There have been greater fluctuations in the participation rates in the under 16 age group with participation rates in other age groups being more stable.

In 2007-08, of the total of 19,929 residents participating in Further Education in South Lanarkshire, 651, or 3.3% - came from Minority Ethnic Communities – with 17,657 (88.8%) being from the White community.

In terms of the Minority Ethnic Communities, the numbers participating in Further Education has now risen each year since 2004-05 and is at its highest level ever. Its share is also at its highest level ever. The numbers participating from the White community is the 2nd highest since 2002-03, and its share of the total is the highest since 2004-05.

After the White community, the largest numbers participating in Further Education in 2007-08 came from the Pakistani community – 132, or 0.7%. The Other Ethnic groups was the next largest – 165, or 0.8%. Next came the Chinese community with 130 (0.7%) and the Indian community at 108 (0.5%). The smallest numbers were from the Black Caribbean community at 25 (0.1%).

Over the 2006-07 to 2007-08 period, the largest percentage increase in participation was from the Bangladeshi community, up 300%, followed by Black Other, up 200% and the Indian community, up 177%. The White community was the only one to experience a decline in the numbers in Further education.

Over the 2000-01 to 2007-08 period, the numbers participating in Further Education increased in all ethnic groups. In percentage terms, the largest increases were in the numbers participating from the Black African community, up 720%, followed by increases of 489% in Other ethnic communities numbers and of 400% in the numbers from the Black Caribbean and Black Other communities. The smallest percentage rise was in the numbers from the White community, up 7.2%.

In 2007-08, of those participating in Further Education from South Lanarkshire, 15,617, or 78.4%, had no Known disability. There were a further 2,120 – 10.6% - who had a Known disability and 2,192 (11%) whose disability status was unknown or who refused to supply any information.

At 2,120, the numbers with a Known disability participating in Further Education in 2007-08 was the lowest since 2004-05 and the first fall since 2003-04. At 10.6%, their share was the lowest since 2003-04.

Of those who did have a Known Disability in 2007-08, 405 were Dyslexic, 371 had an Unseen disability (asthma, diabetes, epilepsy, etc.) and 243 had multiple disabilities. A total of 623 had Other disabilities.

Over the 2006-07 to 2007-08 period, there was a 1.2% fall in the number of people with No known disability participating in Further Education and a 4.6% fall in the numbers with a Known disability.

There were also falls of 37% in those who had Personal care support needs, a 24.8% fall in those with Other Disabilities and an 11% fall in Wheelchair users / people with mobility difficulties.

However, there was a 29.8% rise in the numbers with Dyslexia participating in Further education, a 14.6% rise in the numbers with Multiple disabilities and an 11% rise in the number who were Blind or partially sighted.

Overall, between 2000-01 and 2007-08, there was a 10.7% rise in the numbers participating in Further Education, there was a 13.2% rise in the numbers with No known disability participating but a 24.5% rise in the number with a Known disability. Over this period, only the numbers with Mental health difficulties and with Other disabilities fell – by 2.6% and 14.9% respectively.

There was a 235% rise in the numbers with Dyslexia participating, a 95% rise in the number of wheelchair users / with mobility problems and an 89% rise in the numbers with Personal care support needs.

In 2007-08 of those entering Further education, 66.4% (13,227) had No qualifications. For 1,769 entrants (8.9%) their qualification level was Not Known. Seven percent (1,405) had 5 or more Standard Grades at Levels 1-3, 5.1% (1,017) had 3 or more Highers, 4.7% (942) had SVQs at Levels 4 and 5 and 4.4% (871) had 5 or more Standard Grades at Levels 1 to 5.

Over the 2006-07 to 2007-08 period, the numbers participating in Further Education fell by 3.8%. Over the same period, the number whose Qualifications were Not known fell by 15%, those with Other qualifications fell by 8% and those with SVQ Level 4 and 5 fell by 4.7%. The proportion with No Qualification fell by 3.6%. There was a 100% rise in the numbers with SVQ Level 1, a 61% rise in the numbers with SVQ Level 2 and a 9.4% rise in the numbers with SVQ Level 3.

Between 2000-01 and 2007-08, the numbers in Further education rose by 10.7%. There was a 24% rise in the numbers with No qualifications over this period and a 686% rise in the numbers whose qualifications are Not Known. There was a 180% rise in those participating in Further education with SVQ Level 3 qualifications and a 150% rise in those with SVQ Level 2. There was a 68% rise in those participating with qualifications at SVQ Levels 4 and 5.

There was a 77% fall in the numbers with NC Modules participating in Further Education, a 59% fall in those with Fewer than 5 Standard Grades at 1-5 and a 49% fall in those with 5 or more Standard Grades at 1-5.

In 2007-08, 90% of the funding for Further Education courses being taken in South Lanarkshire came from the Scottish Funding Council. A further 8% had had their funding paid by UK Government departments & other public bodies and 1.6% had their courses funded by employers with 0.3% having their courses funded through the New Deal and 0.1% from Higher Education institutions. The Scottish Funding Council has been responsible for the funding of over 90% of courses taken by South Lanarkshire residents since 2000-01. Recently, there has been an increase in those courses funded by the New Deal and employers.

In terms of the source of fees by participants in Further Education, 41% (7,986) had their fees waived. A further 20% (4,034) had their fees paid by their Employer and 12% (2,330) were Self Financing. For 8%, the source of their fee payments was not known.

Over the 2006-07 to 2007-08 period, the number of participants in Further Education fell by 3.8%. There was a 49% fall in the numbers having their fees paid from Public bodies, 47% from European funding and 37% from Scottish Local Authority Bursaries. There was a 550% rise in the numbers having their fees paid by the New Deal – from a low base – an 8.7% rise in those having their fees paid by UK employers and a 7.2% rise from the Student Awards Agency for Scotland.

Between 2000-01 and 2007-08 there was a 10.7% rise in the number of participants. There was a 77% rise in the number having their fees paid from Modern Apprenticeships, Skillseekers, etc., a 65% rise in the numbers having their fees waived and a 27% increase in those who had their fees paid by Local Enterprise Companies. There was a 67% fall in those having their fees paid through the New Deal, a 61% fall in those having their fees paid from Public Bodies and a 37% fall in those whose fees were paid by the Student Awards Agency for Scotland.

The proportion having their fees waived has risen from just over 25% to just over 40% in this period. Those who were Self financing have been declining in number almost throughout the period and there have also been declines in those having their paid fees by the Student Awards Agency for Scotland.

In 2007-08 the subject taken by the greatest number of participants in Further Education from South Lanarkshire was Personal Development, Family Care, Personal Care & Appearance – 4,587 or 23%. The next most popular subjects being taken were Healthcare, Medicine and Health & Safety (3,143, 15.8%), IT & Information (2,086, 10.5%), Catering, Food, Leisure and Tourism (1,709 or 8.6%) and Construction & Property (1,571, 7.9%). The subjects being taken by the least number of people were Humanities (18, or 0.1%), Oil, Mining, Plastics & Chemicals (39 or 0.2%) and Services to Industry (42, 0.2%).

Over the 2006-07 to 2007-08 period, the numbers participating in Further Education fell by 3.8%. Over this period, the numbers taking Environmental protection, security, energy & cleaning rose by 66%. There was a 46% increase in those studying Performing Arts, a 42% rise in those taking Selling, marketing & distribution and a 14% rise in the numbers taking Authorship, publishing, media & photography. There was a 27% fall in the numbers taking IT & information, a 26% fall in those taking Services to industry and a 25% fall in those studying Catering, food, leisure services & tourism.

Between 2000-01 and 2007-08, there was a 10.7% rise in the numbers participating in Further Education. However, there was a 543% rise in the numbers studying Environmental protection, security, energy & cleaning, a 160% rise in those studying Oil, mining, plastics & chemicals, a 115% rise in those studying Agriculture, horticulture & animal care and a 101% rise in those studying the Performing Arts. There was a 59% fall in those studying Services to Industry and a 48% fall in those taking Manufacturing & Production subjects as well as a 44% fall in those studying Social Sciences.

In 2007-08, the largest numbers participating in Further Education lived in East Kilbride – 4,987 or 25.8% of the South Lanarkshire total. Next came Hamilton with 3,088 (16%), followed by 2,251 (11.6%) from Rutherglen, 8.9% (1,713) from Cambuslang and 6.5% (1,265) from Blantyre. The smallest number of participants in Further Education were from Uddingston with 298 (1.5% of the total) and 353 from Bothwell (1.8%).

Men accounted for 44% of all participants in 2007-08 in Further Education, but in Strathaven and Hamilton the figures were 46.5% and 45.8% respectively; in Larkhall men accounted for 39% of participants and in Stonehouse for 37%.

In 2007-08, the highest participation rate – at a community level based on the population aged 14 & over – was in Cambuslang at 8.6%. Next came East Kilbride at 8.1%, Rutherglen at 8% and Blantyre at 7.7%. The lowest Further Education participation rates were in Uddingston at 6%, Bothwell at 6.3% and Larkhall at 6.5%.

Over the 2006-07 to 2007-08 period, the numbers participating in Further Education in South Lanarkshire fell by 23.4% in Uddingston, by 22% in Lesmahagow and by 18.7% in Clydesdale East. No community experienced a rise, but the smallest percentage declines were in Bothwell at 0.3%, Rutherglen at 3.3% and Hamilton at 3.7%.

Over the 2003-04 to 2007-08 period, only two areas saw the numbers participating in Further Education rise – by 6.2% in Stonehouse and by 4% in Cambuslang. All other areas experienced a decline, with the greatest percentage declines being in Carluke, down 23.6%, Uddingston, down 23.4%, and Bothwell, down 16.5%.

The participation rate in Uddingston and Bothwell has gone from being above the South Lanarkshire average in 2003-04 and 2004-05 to below it in all subsequent years.

The rate in Blantyre was, until 2007-08 above the average but is now at the same level as for South Lanarkshire as a whole

The rates in Cambuslang, Rutherglen and East Kilbride have always been above the average whereas the rates in Strathaven and Larkhall have always been below the average.

1. PARTICIPATION IN FURTHER EDUCATION BY GENDER

In 2007-08, there were 19,929 residents of South Lanarkshire participating in Further Education. Though this represented a fall of 779 or 3.8% on 2006-07 it is the 2nd highest figure since 2002-03. Table 1 shows the number of people in South Lanarkshire participating in Further Education by gender since 2000-2001. Figure 1 show the number of participants in Further Education from South Lanarkshire from 2000-01 by gender

As this table shows, in 2007-08, 11,184 of those participating in Further Education in South Lanarkshire were Women – 56.1% - and 8,745 (43.9%) were Men. Both these numbers were the 2nd highest – after 2006-07 – since 2002-03. Figure 2 shows the percentage breakdown of all participants by gender since 2000-01. At 43.9%, the proportion who are Men is the highest since 2002-03 and the 2nd highest since 2000-01.

Over the 2006-07 to 2007-08 period, the number of Men participating in Further Education in South Lanarkshire fell by 132 or -1.5%. This compares to a fall of 647 or 5.5% in the number of Women in Further Education.

Since 2000-01 the numbers participating in Further Education has risen over by 1,995, or 10.7%. The number of Women participating has increased by 11.5% (1,223) compared to a 9.5% rise (up 772) in the number of Men.

Figure 3 shows the percentage change in the numbers participating in Further education by gender in South Lanarkshire from 2000-01 and 2006-07 to 2007-08 respectively.

Table 1: South Lanarkshire Further Education participation since 2000-2001

Year	Males	Females	Total
2000-2001	8,105	10,608	18,713
2001-2002	8,478	11,585	20,063
2002-2003	8,882	11,196	20,078
2003-2004	8,161	11,043	19,204
2004-2005	7,538	10,595	18,133
2005-2006	7,673	9,919	17,592
2006-2007	8,877	11,831	20,708
2007-2008	8,745	11,184	19,929

In 2007-08, it is estimated that around 7.7% of the 14 plus population of South Lanarkshire were participating in Further Education. This is down on the 8% figure for 2006-07 but is the 2nd highest rate since 2002-03. Figure 4 show the participation rate for South Lanarkshire since 2000-01. As this figure shows, the rate “peaked” in 2000-01 and then fell until 2006-07, when it rose again back to near its peak, before falling back in 2007-08.

In 2007-08, the Female participation rate in Further Education is estimated at 8.2% and the Male rate is estimated at 7.1%.

Both show falls from their 2006-07 levels but are above the rates for each year since 2002-03. In every year, the participation rate for Men was below that for Women.

Table 2 shows the participation rates by gender for South Lanarkshire since 2000-01 and these rates are shown graphically in Figure 5.

Table 2: South Lanarkshire Further Education participation rates

Year	Males	Females	Total
2000-2001	6.9%	8.0%	7.5%
2001-2002	7.2%	8.7%	8.0%
2002-2003	7.5%	8.4%	8.0%
2003-2004	6.8%	8.2%	7.5%
2004-2005	6.2%	7.8%	7.1%
2005-2006	6.3%	7.3%	6.8%
2006-2007	7.2%	8.6%	8.0%
2007-2008	7.1%	8.2%	7.7%

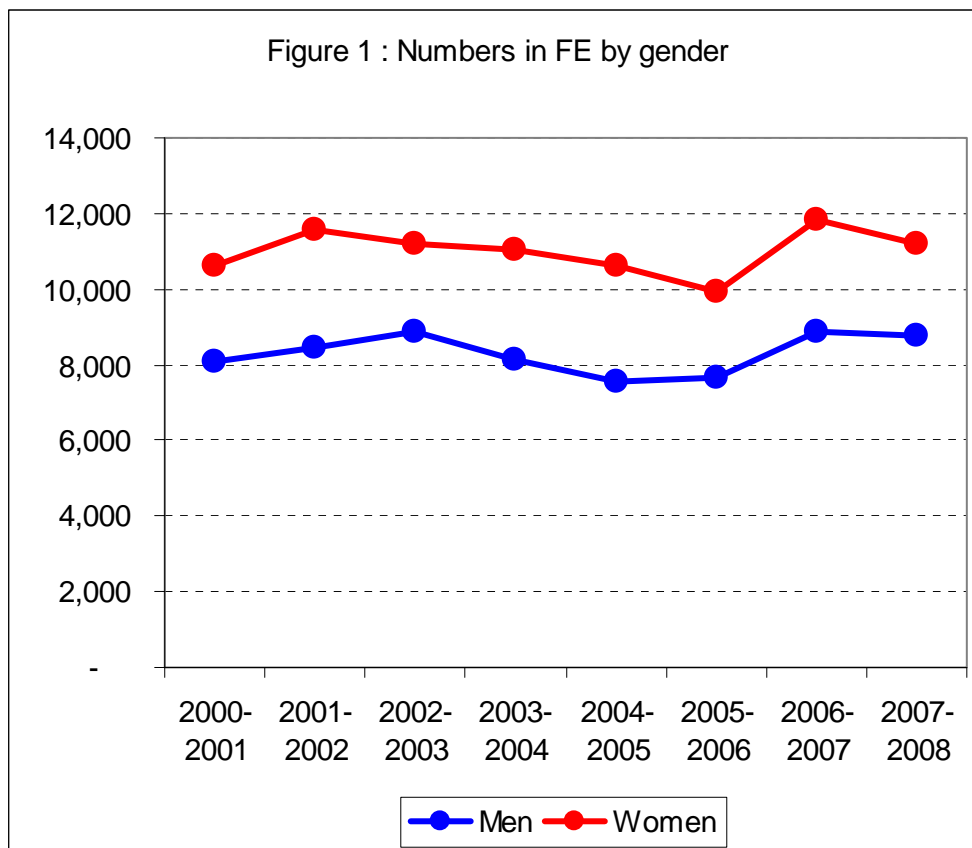


Figure 2: Gender breakdown of Further Education



Figure 3 : % change in participation in South Lanarkshire

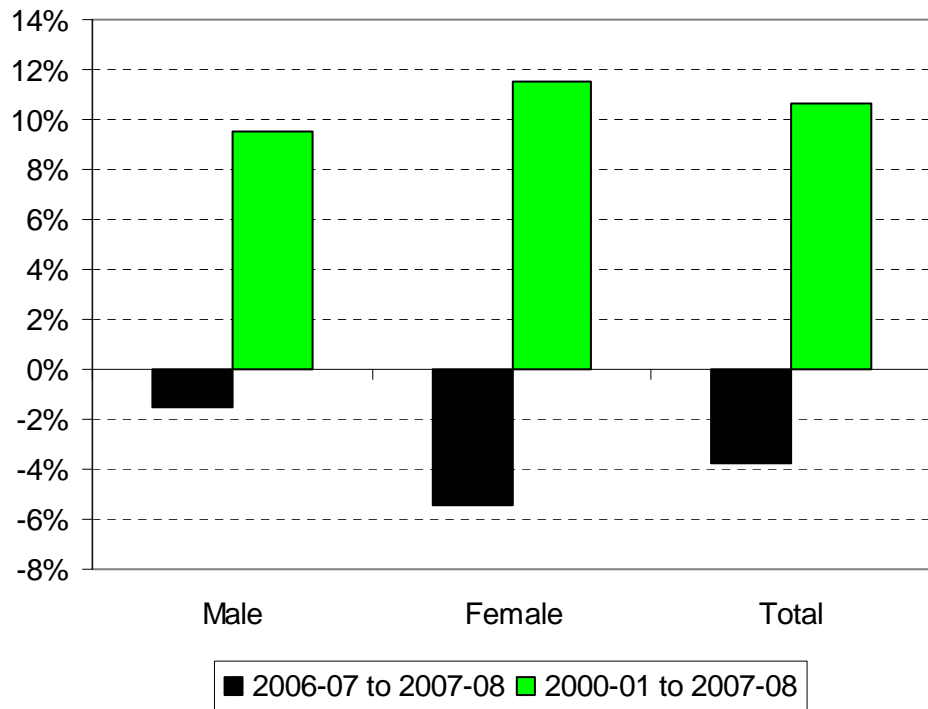


Figure 4 : Further Education Participation rate

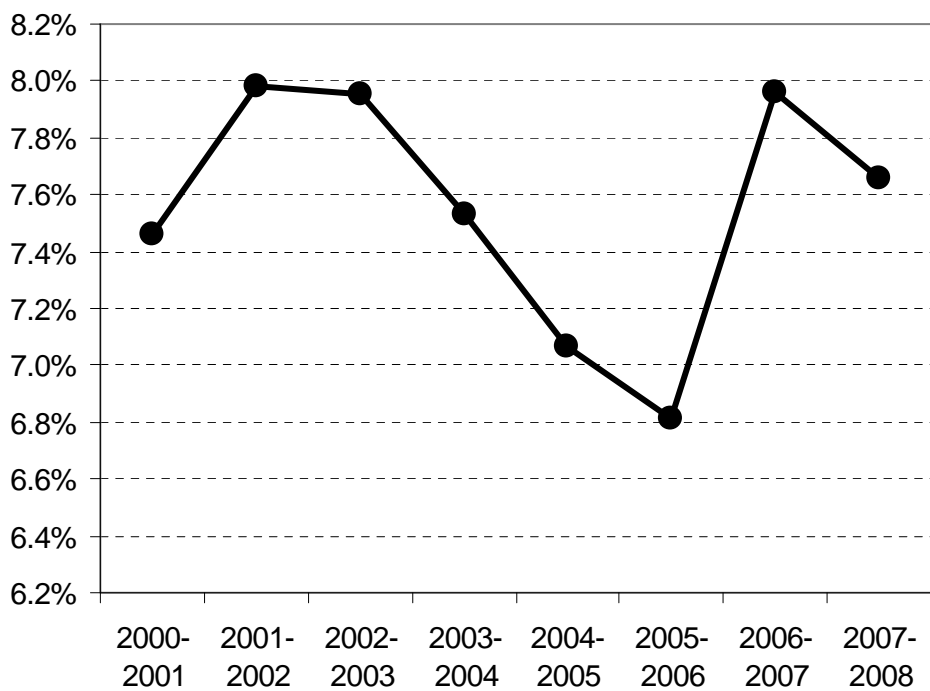
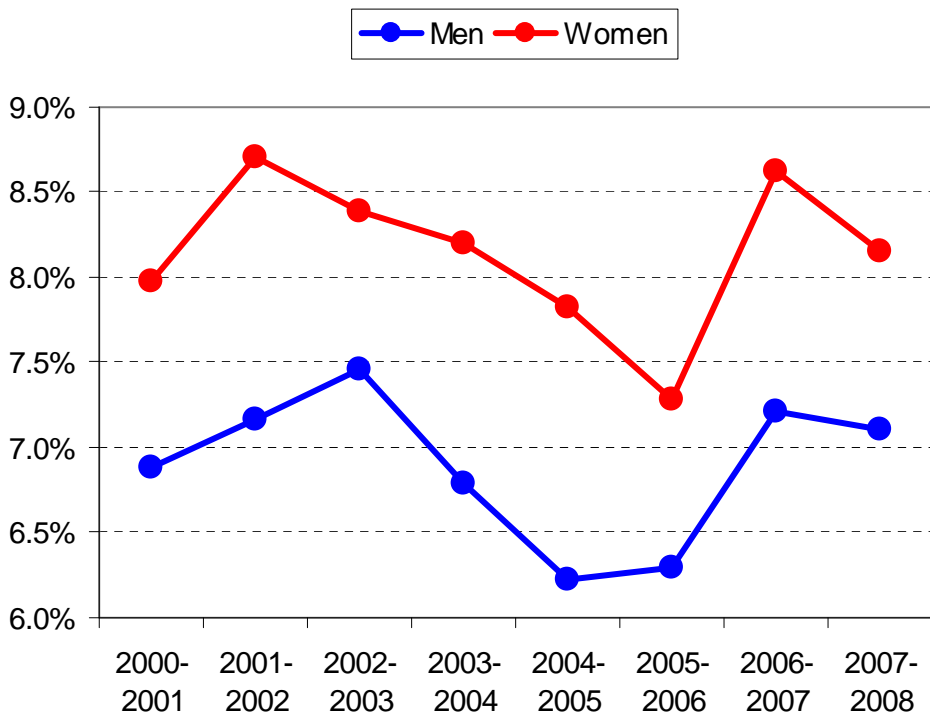


Figure 5 : Further Education Participation rate



2. PARTICIPATION IN FURTHER EDUCATION BY AGE

In 2007-08 of those participating in Further Education, 47% (9,471) were aged 25-59. A further 21% (4,132) were aged 16 to 18 and a further 16% (3,248) were aged 19-24. A total of 1,866 or 9% were aged under 16 and 698 (3.5%) were aged 65 and over. Figure 6 shows the breakdown by age of those participating in Further Education in South Lanarkshire in 2007-08.

Over the 2006-07 to 2007-08 period, the overall number participating in Further Education fell by 3.8% in South Lanarkshire. However, over this period there was an increase in the numbers participating in the 16-18 and 19-24 age groups but declines in participation in all other age groups. There was a rise of 4.8% in the numbers participating aged 19-24 and of 4.2% in those aged 16-18. There was a 27% fall in the numbers participating aged 65 or over and a 19% fall in the numbers participating aged under 16 as well as a 9% fall in the numbers age 60-64.

Over the 2000-01 to 2007-08 period, the total rose by 10.7%. The numbers participating fell in only one age group – a fall of 0.5% in those aged 25-59. The numbers rose in all other age groups, ranging from a 113% rise in those aged 65 & over, a 23% rise in the numbers aged 60-64 and a 12% rise in the numbers aged 16 to 18. The number of under 16s participating rose by 5% over this period.

Figure 7 shows the percentage change in the numbers in South Lanarkshire participating in Further Education by age between 2000-01 and 2007-08 and between 2006-07 and 2007-08.

Table 3: Further Education participating by age in 2007-08

AGE BAND	Numbers	%	% change 2006-07	% change 2000-01
under 16	1,866	9.4%	-18.9%	5.1%
16 to 18	4,132	20.7%	4.2%	11.8%
19-24	3,248	16.3%	4.8%	9.0%
25-59	9,471	47.5%	-3.5%	-0.5%
60-64	514	2.6%	-8.9%	23.3%
65 & over	698	3.5%	-27.1%	112.8%
Total	19,929	100%	-3.8%	+10.7%

Figure 6 : FE breakdown by Age in 2007-08

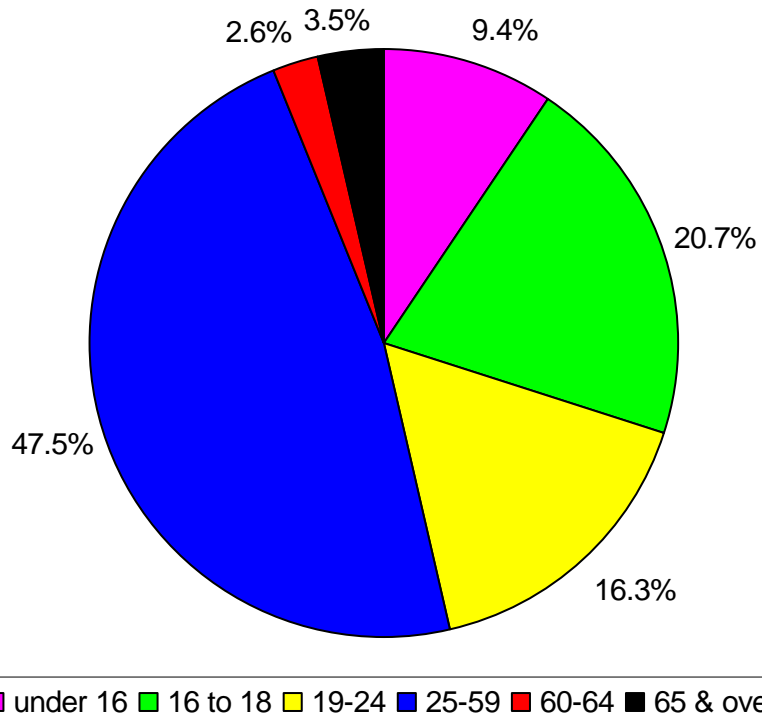
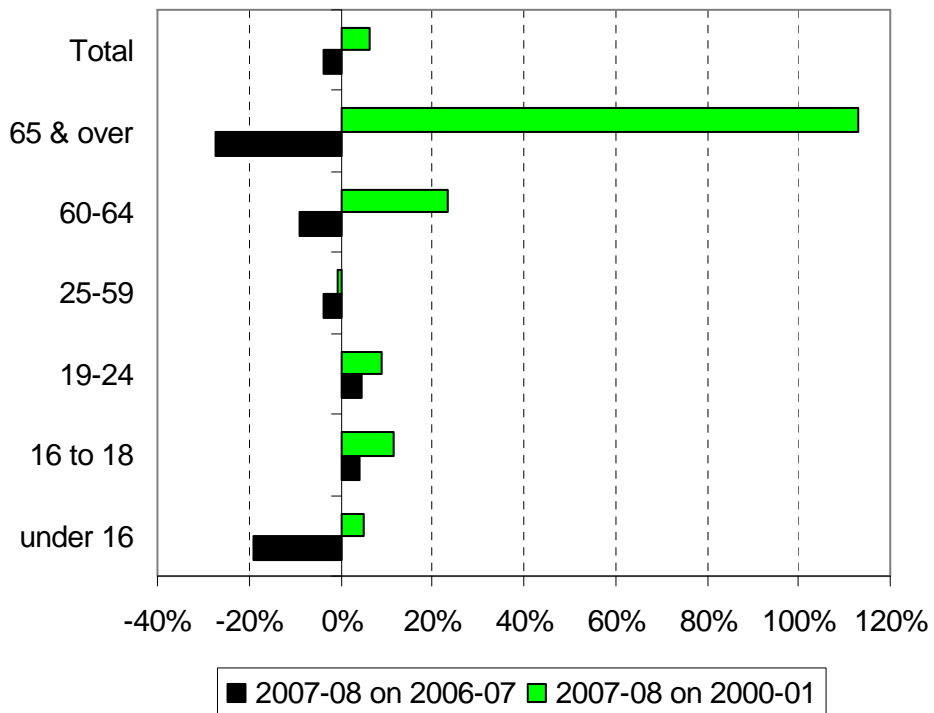


Figure 7: % change in participation by age



In 2007-08 the overall participation rate in Further Education was 7.7%. It is estimated that the highest participation rate in Further Education was amongst the 16 to 18 age group, at 35%. The next highest rate was amongst those aged under 16 (at 23%) and 14% of those aged 19-24 were estimated to be participating in Further Education.

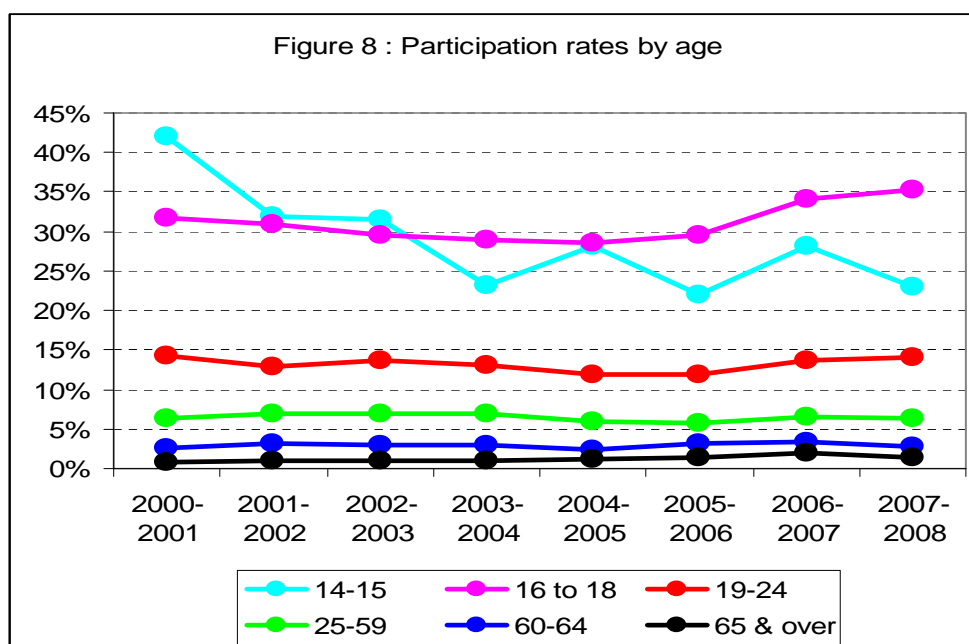
The lowest participation rate was amongst the 65 & over age group, with 1.4% participating in Further Education, followed by a rate of 2.9% amongst those aged 60-64 and 6.3% of those aged 25 to 59.

In general there has been a gradual rise in recent years in participation rates in the 16-18 and 19-24 year old age groups. There have been greater fluctuations in the participation rates in the under 16 age group with participation rates in other age groups being more stable.

Figure 8 shows the participation rates by age in South Lanarkshire since 2000-01.

Table 4: Further Education participation rates by age in 2007-08

AGE BAND	Numbers	Rate %
under 16	1,866	23.0%
16 to 18	4,132	35.2%
19-24	3,248	14.0%
25-59	9,471	6.3%
60-64	514	2.9%
65 & over	698	1.4%
Total	19,929	7.7%



3. PARTICIPATION IN FURTHER EDUCATION BY ETHNICITY

In 2007-08, of the total of 19,929 residents participating in Further Education in South Lanarkshire for whom ethnicity was known, 651, or 3.3% - came from Minority Ethnic Communities – with 17,657 (88.6%) being from the White community.

In terms of Minority Ethnic Communities, the number participating in Further Education has risen each year since 2004-05 and is at its highest level ever. Its share is also at its highest level ever.

The numbers participating from the White community is the 2nd highest since 2002-03, and its share of the total is the highest since 2004-05.

Table 5 shows the numbers of White and Minority Ethnic Communities participating in Further Education since 2000-01 and the share of the total accounted for by Minority Ethnic Communities since this date.

Over the 2006-07 to 2007-08 period the number of people from the White Community participating in Further Education fell by 465 or 2.6%. The numbers participating from Minority Ethnic Communities rose over the same period by 35 or 10.7%.

Over the 2000-01 to 2007-08 period the number of White people participating in Further Education in South Lanarkshire increased by 1,186 or 7.2%. This compares with an increase of 466, or 252% in participation by people from Minority Ethnic Communities.

Table 5: Participation in Further Education by Ethnicity

Year	White	Minority Ethnic communities	Total	% Minority Ethnic Communities
2000-2001	16,471	185	18,713	1.0%
2001-2002	17,816	202	20,063	1.0%
2002-2003	17,689	325	20,078	1.6%
2003-2004	17,199	314	19,204	1.6%
2004-2005	16,238	303	18,133	1.7%
2005-2006	15,278	327	17,592	1.9%
2006-2007	18,122	362	20,708	1.7%
2007-2008	17,657	651	19,929	3.3%

Figure 9 shows the proportion of participants in South Lanarkshire who were from the White community.

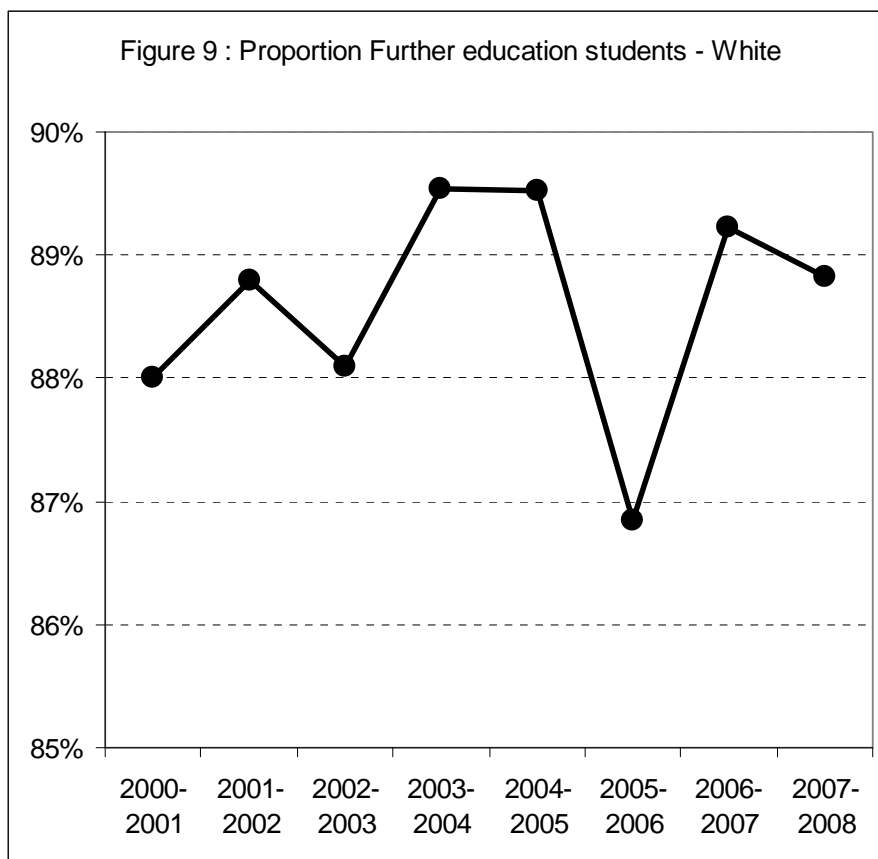


Table 6 shows the numbers in 2007-08 participating in Further Education from South Lanarkshire by ethnic group and the percentage changes from 2000-01 and from 2006-07. The figures do not add up to the total due to the exclusion of those whose ethnic origin was not known or who refused to supply it.

Table 6: Ethnic breakdown in 2007-08 and percentage changes

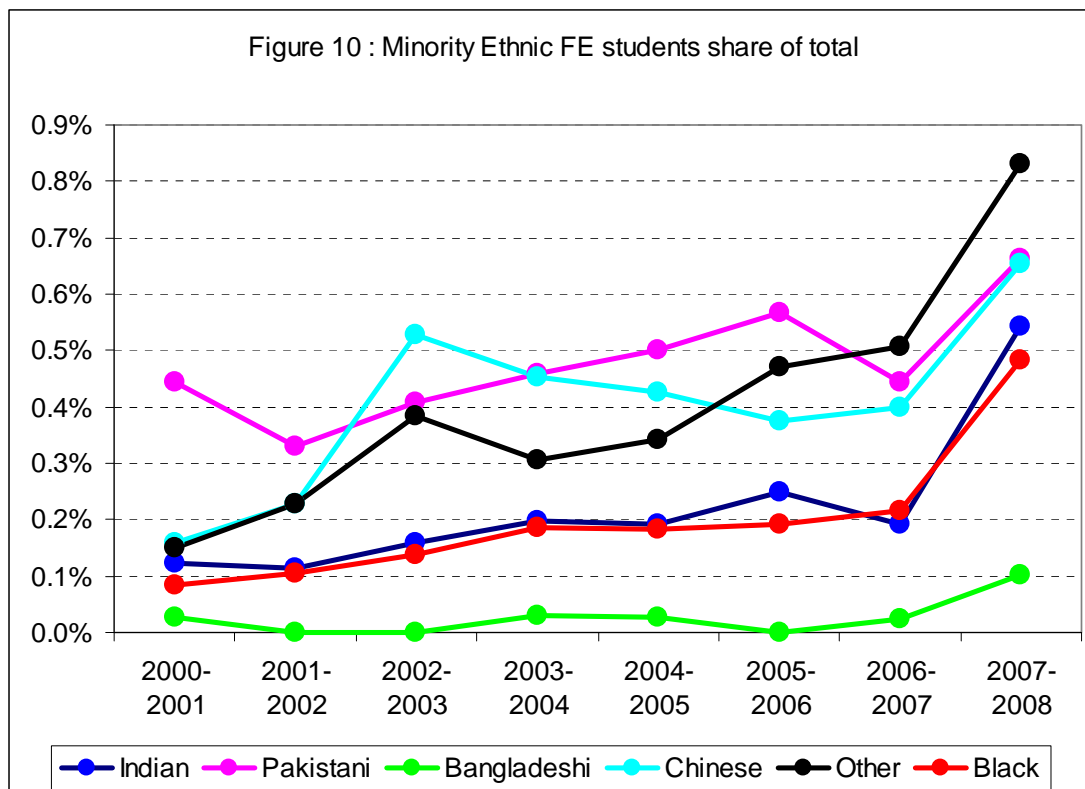
Ethnic Origin	2007-08	%	2006-07 to 2007-08	2000-01 to 2007-08
			% change	% change
White	17,657	88.8%	-2.6%	7.2%
Black Caribbean	25	0.1%	127.3%	400.0%
Black African	41	0.2%	78.3%	720.0%
Black Other	30	0.2%	200.0%	400.0%
Indian	108	0.5%	176.9%	369.6%
Pakistani	132	0.7%	46.7%	59.0%
Bangladeshi	20	0.1%	300.0%	300.0%
Chinese	130	0.7%	60.5%	333.3%
Other ethnic groups	165	0.8%	60.2%	489.3%
Total	19,929	100%	-3.8%	10.7%
Known ethnic minorities	651	3.3%	10.7%	251.9%

As this table shows, after the White community, the largest numbers participating in Further Education in 2007-08 came from the Pakistani community – 132 or 0.7%. The Other Ethnic groups was the next largest – 165 or 0.8%. Next came the Chinese community with 130 (0.7%) and the Indian community at 108 (0.5%). The smallest numbers were from the Black Caribbean community at 25 (0.1%).

Over the 2006-07 to 2007-08 period, the largest percentage increase in participation was from the Bangladeshi community, up 300%, followed by Black Other, up 200% and the Indian community, up 177%. The White community was the only one to experience a decline in the numbers in Further education.

Over the 2000-01 to 2007-08 period, the numbers participating in Further Education increased in all ethnic groups. In percentage terms, the largest increases were in the numbers participating from the Black African community, up 720%, followed by increases of 489% in Other ethnic communities numbers and of 400% in the numbers from the Black Caribbean and Black Other communities. The smallest percentage rise was in the numbers from the White community, up 7.2%.

Figure 10 shows the proportion from the Minority Ethnic Communities broken-down into ethnic groups. As this figure shows, in general there has been an upward trend in the share of all those participating in Further Education in South Lanarkshire from most Ethnic Minority Communities. The one exception is the Chinese community whose share fell from 2002-03 to 2005-06 before it increasing again.



4. PARTICIPATION IN FURTHER EDUCATION BY DISABILITY

In 2007-08 of those participating in Further Education from South Lanarkshire 15,617 or 78.4% had no Known disability. There were a further 2,120 (10.6%) who had a Known disability and 2,192 (11%) whose disability status was unknown or who refused to supply any information.

Table 7 shows a breakdown of participation in Further Education by Disability in South Lanarkshire since 2000-01

Table 7: Further Education participation by Disability status

Year	No Known Disability	Known Disability	Total	% Known Disability
2000-2001	13,802	1,703	18,713	10.4%
2001-2002	15,726	1,800	20,063	9.3%
2002-2003	15,652	2,234	20,078	11.1%
2003-2004	11,133	1,637	19,204	8.5%
2004-2005	12,710	2,031	18,133	11.2%
2005-2006	12,833	2,196	17,592	12.5%
2006-2007	15,804	2,223	20,708	10.7%
2007-2008	15,617	2,120	19,929	10.6%

At 2,120, the numbers with a Known disability participating in Further Education in 2007-08 was the lowest since 2004-05 and the first fall since 2003-04. At 10.6%, their share was the lowest since 2003-04.

Figure 11 shows the number of people participating in Further Education with a Known Disability from South Lanarkshire since 2000-01.

As this figure shows the proportion with a Known disability reached an all time low in 2003-04 at 8.5% and then rose to peak at just over 12.5% in 2005-06 and since then it has fallen back.

Over the 2006-07 to 2007-08 period, the overall numbers participating in Further Education fell by 3.7%. The numbers with No Known Disability fell by 1.2% (or 187) over this period but the numbers with a Known Disability fell by 4.6% (down 103).

Over the 2000-01 to 2007-08 period, there was an overall increase of 10.7% in the numbers participating in Further Education from South Lanarkshire. The numbers with No Known Disability rose by 13.2% (1,815) whilst the numbers with a Known Disability increased by 24.5% or 417.

Table 8 shows the number of students from South Lanarkshire with either No or a Known disability in 2007-08. As this table shows, 15,617 students had No known disability. Of those who did, 405 were Dyslexic, 371 had an Unseen disability (asthma, diabetes, epilepsy, etc.) and 243 had multiple disabilities. A total of 623 had Other disabilities.

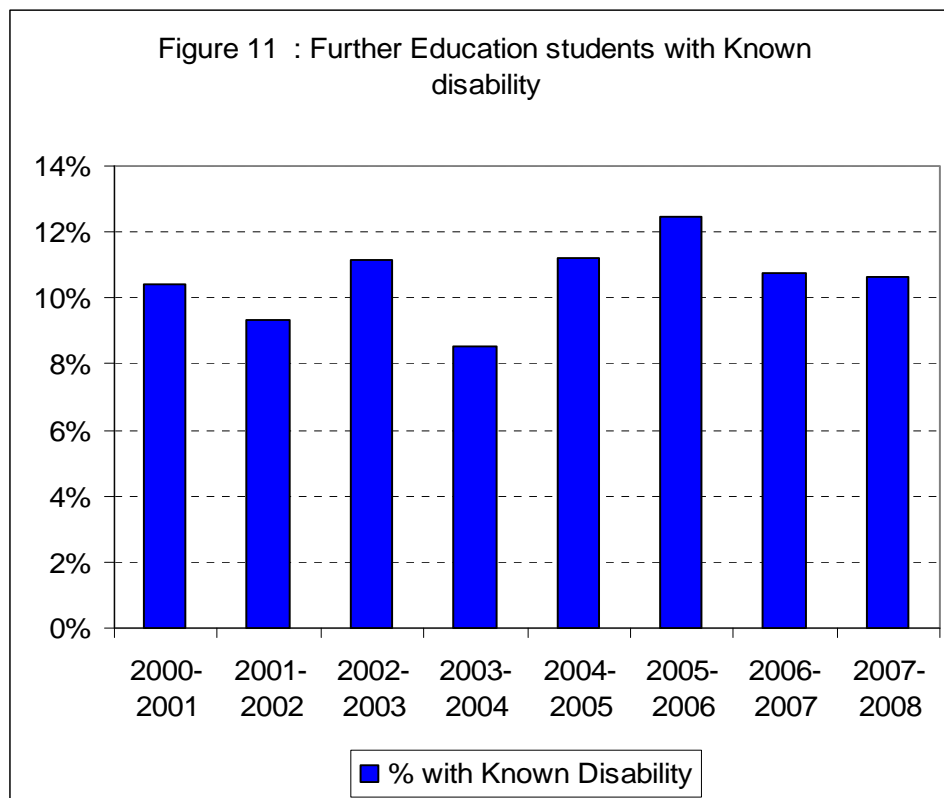


Table 8: Further Education participation by disability in 2007-08

DISABILITY STATUS	numbers	%	2006-07 to 2007-08	2000-01 to 2007-08
			% change	% change
No known disability	15,617	78.4%	-1.2%	13.2%
Dyslexia	405	2.0%	29.8%	234.7%
Blind / are partially sighted	81	0.4%	11.0%	42.1%
Deaf / have a hearing impairment	115	0.6%	7.5%	43.8%
Wheelchair user / mobility difficulties	115	0.6%	-11.5%	94.9%
Personal care support	17	0.1%	-37.0%	88.9%
Mental health difficulties	150	0.8%	-3.2%	-2.6%
An unseen disability *	371	1.9%	-2.1%	24.1%
Multiple disabilities	243	1.2%	14.6%	26.6%
Other disabilities not listed above	623	3.1%	-24.8%	-14.9%
Total	19,929	100%	-3.8%	10.7%
Known Disability	2,120	10.6%	-4.6%	24.5%

* e.g. diabetes, epilepsy, asthma

Over the 2006-07 to 2007-08 period there was a 1.2% fall in the number of people with No known disability participating in Further Education and a 4.6% fall in the numbers with a Known disability. There were also falls of 37% in those who had Personal care support needs, a 24.8% fall in those with Other Disabilities and an 11% fall in Wheelchair users / people with mobility difficulties.

However, there was a 29.8% rise in the numbers with Dyslexia participating in Further education, a 14.6% rise in the numbers with Multiple disabilities and an 11% rise in the number who were Blind or partially sighted.

Overall, between 2000-1 and 2007-08, there was a 10.7% rise in the numbers participating in Further education, there was a 13.2% rise in the numbers with No known disability participating and a 24.5% rise in the number with a Known disability. Over this period only the numbers with Mental health difficulties and with Other disabilities fell – by 2.6% and 14.9% respectively.

There was a 235% rise in the numbers with Dyslexia participating, a 95% rise in the number of wheelchair users / people with mobility problems and an 89% rise in the numbers with Personal care support needs.

Figure 12 shows the breakdown of those with a Known Disability by type in 2007-08 in South Lanarkshire.

As this figure shows, of those with a Known Disability, 30% had Other disabilities, 19% had Dyslexia, 18% had Unseen Disabilities, 11% Multiple Disabilities and 7% had Mental health disabilities.

Figure 13 shows the share each Known disability has had of all participants since 2000-01. There has generally been an increase in those with Dyslexia and Multiple disabilities and a decreasing share with Other disabilities.

Figure 12 : FE students by disability in 2007-08

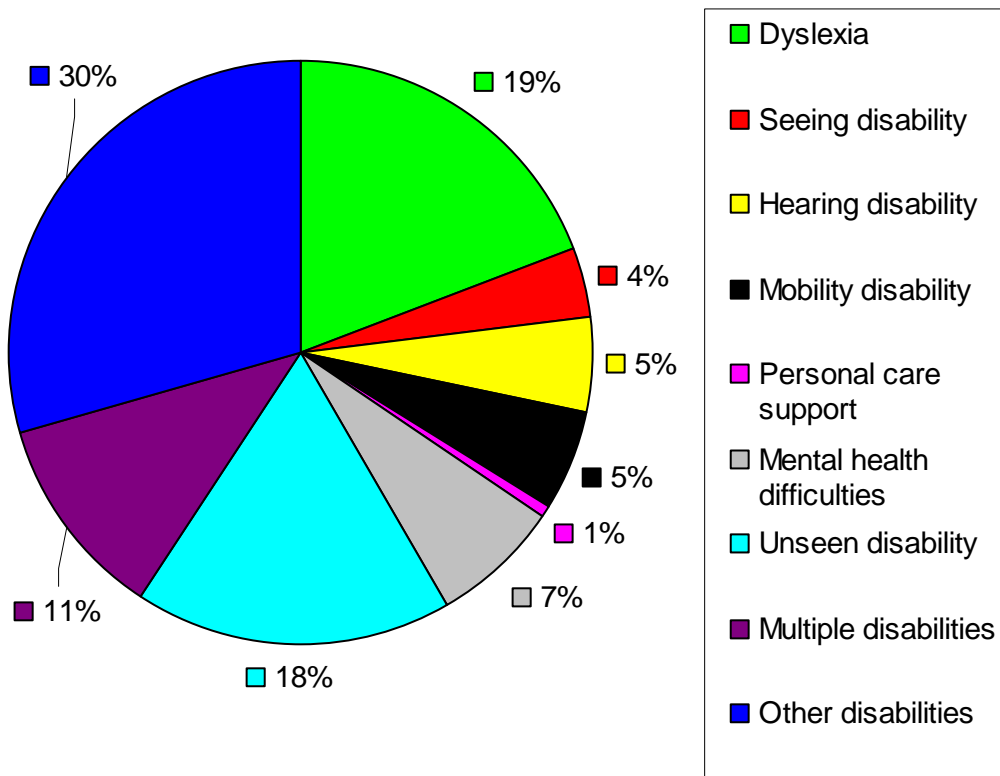
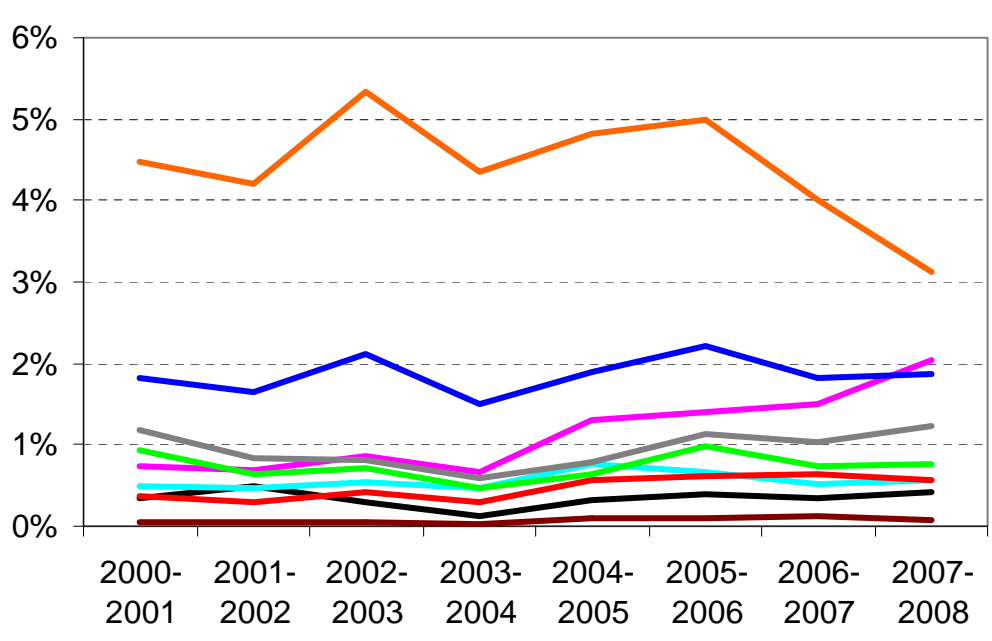
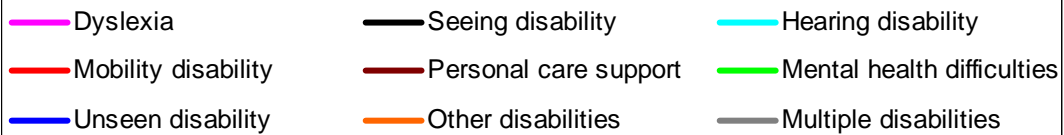


Figure 13 : Participants with a known disability



5. PARTICIPATION IN FURTHER EDUCATION BY ENTRY LEVEL

In 2007-08, of those entering Further education, 66.4% (13,227) had No qualifications and for a further 1,769 (8.9%) their qualification level was Not Known. Seven percent (1,405) had 5 or more Standard Grades at Levels 1-3, 5.1% (1,017) had 3 or more Highers, 4.7% (942) had SVQs at Levels 4 and 5 and 4.4% (871) had 5 or more Standard Grades at Levels 1 to 5.

Table 9 contains a breakdown of the entry level qualifications of those participating in Further Education from South Lanarkshire in 2007-08.

Table 9: Further education participation in 2007-08 by entry level

Entry qualifications	Numbers	%	2006-07 to 2007-08	2000-01 to 2007-08
			% change	% change
SVQ Level 4 and 5	942	4.7%	-4.7%	68.2%
SVQ Level 3	70	0.4%	9.4%	180.0%
3+ Highers	1,017	5.1%	6.2%	-29.5%
SVQ Level 2	50	0.3%	61.3%	150.0%
5+Standards Grades at 1-3	1,405	7.0%	-2.6%	-49.0%
SVQ Level 1	10	0.1%	100.0%	n/a
5 + Standard Grades at 1-5	871	4.4%	2.7%	-40.4%
Other qualifications	23	0.1%	-8.0%	-14.8%
NC Modules	104	0.5%	18.2%	-77.2%
Less than 5 Standard Grades at 1-5	447	2.2%	-1.3%	-59.1%
No qualifications	13,227	66.4%	-3.6%	24.2%
Not known	1,769	8.9%	-15.1%	686.2%
Total	19,929	100%	-3.8%	10.7%

As the above table shows, over the 2006-07 to 2007-08 period the numbers participating in Further Education fell by 3.8%. Over the same period, the numbers whose Qualifications were Not known fell by 15%, those with Other qualifications fell by 8% and those with SVQ Level 4 and 5 fell by 4.7%. The proportion with No Qualification fell by 3.6%. There was a 100% rise in the numbers with SVQ Level 1, a 61% rise in the numbers with SVQ Level 2 and a 9.4% rise in the numbers with SVQ Level 3.

Between 2000-01 and 2007-08, the numbers in Further education rose by 10.7%. There was a 24% rise in the numbers with No qualifications over this period and a 686% rise in the numbers whose qualifications are Not Known. There was a 180% rise in those participating in Further education with SVQ Level 3 and a 150% rise in those with SVQ Level 2. There was a 68% rise in those participating with qualifications at SVQ Levels 4 and 5. There was a 77% fall in the numbers with NC Modules participating in Further Education, a 59% fall in those with Fewer than 5 Standard Grades at 1-5 and a 49% fall in those with 5 or more Standard Grades at 1-5.

Figure 14 shows a breakdown in percentage terms of the main entry level qualifications of those participating in Further Education from South Lanarkshire. The proportion with No Qualifications has been rising each year from a recent low in 2003-04 of 59.4% to 66.4% in 2007-08. This could be due to the increase in the number of under 16s participating in Further Education.

As this figure shows, the proportion of those participating with SVQ Level 4 and 5 has been increasing whilst those with 3 or more Highers have been falling, as have those with 5 or more Standard Grades at Levels 1 to 3.

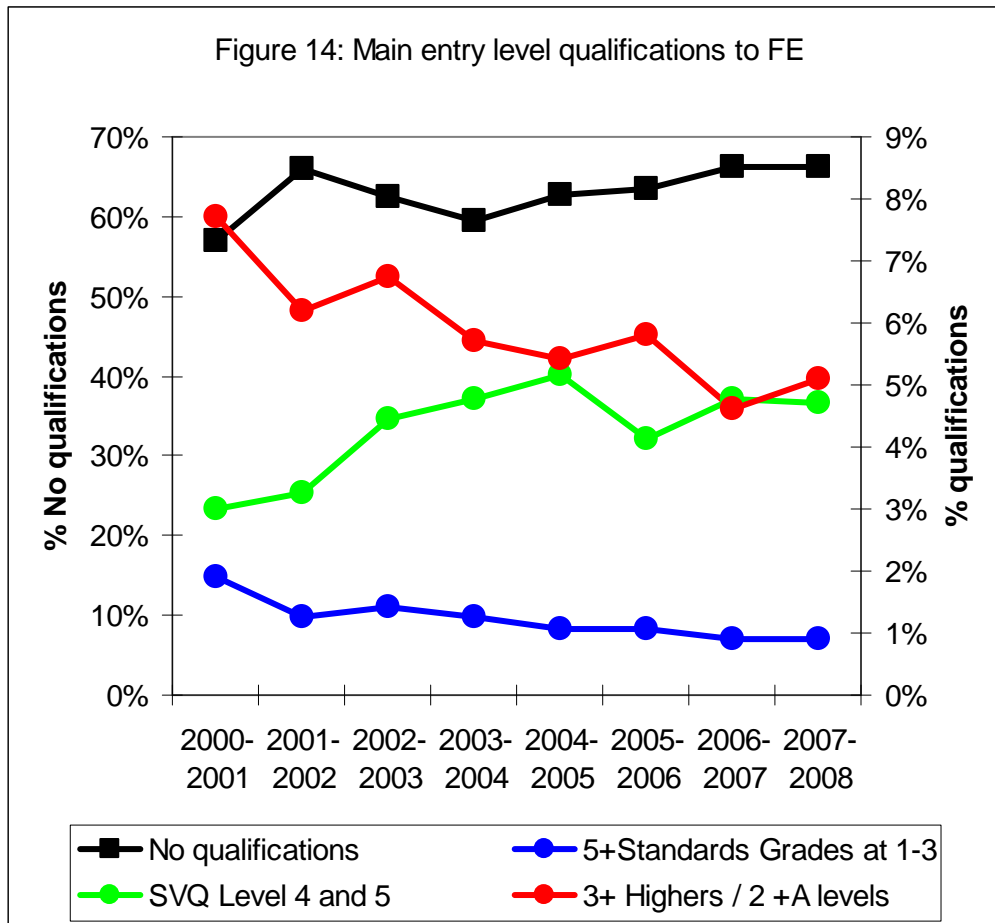
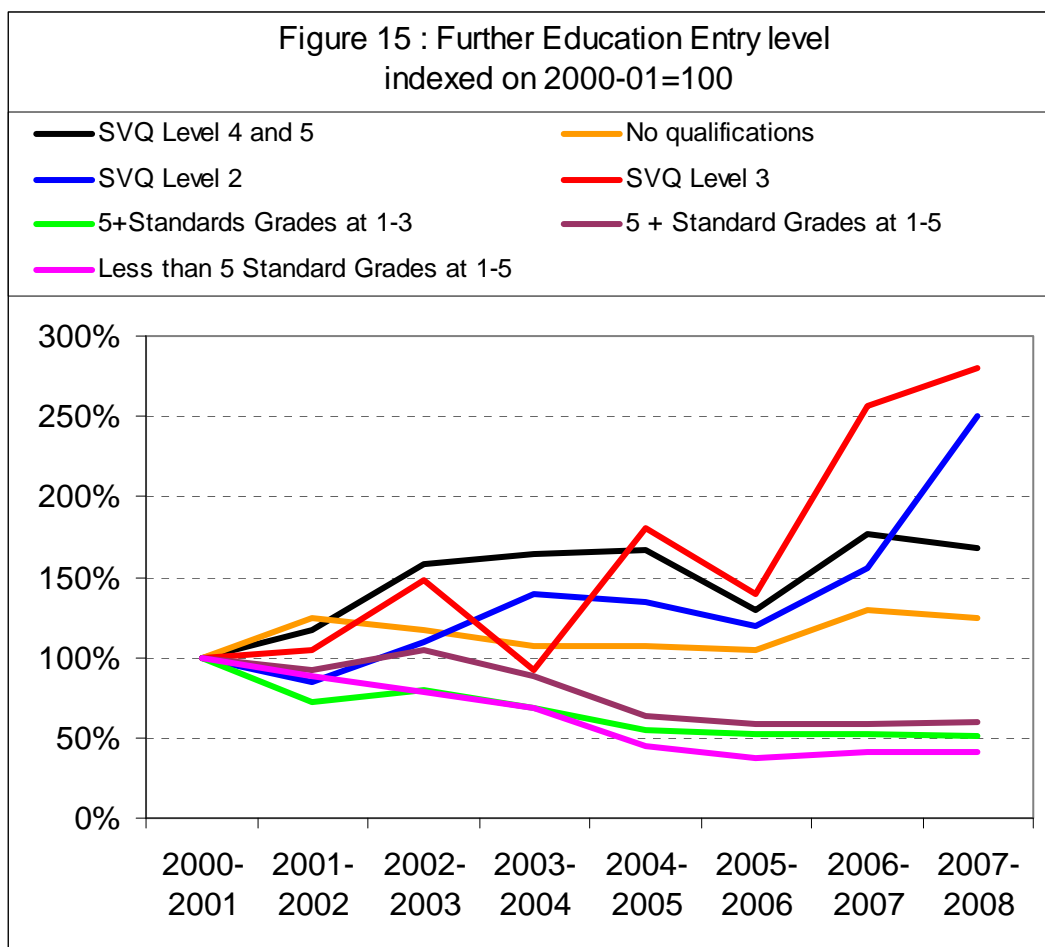


Figure 15 shows the trend in the numbers participating from South Lanarkshire by their entry qualification levels with their 2000-01 levels being set at 100.

As this figure shows, there has been a significant increase in the numbers participating in Further Education with SVQ Level 3, SVQ Level 2 and SVQ Level 4 and 5 by 2007-08. The numbers with No qualifications fell from a high in 2001-02 nearly back to its 2000-01 level by 2005-06 and then increased to around a quarter higher in 2007-08 than its 2000-01 level. The numbers participating with Less than 5 Standard Grades at Levels 1 to 5, with 5 or more Standard Grades at Levels 1 to 3 and those with 5 or more Standard Grades at Levels 1 to have all declined from their 2000-01 levels.



6. PARTICIPATION IN FURTHER EDUCATION BY FUNDING

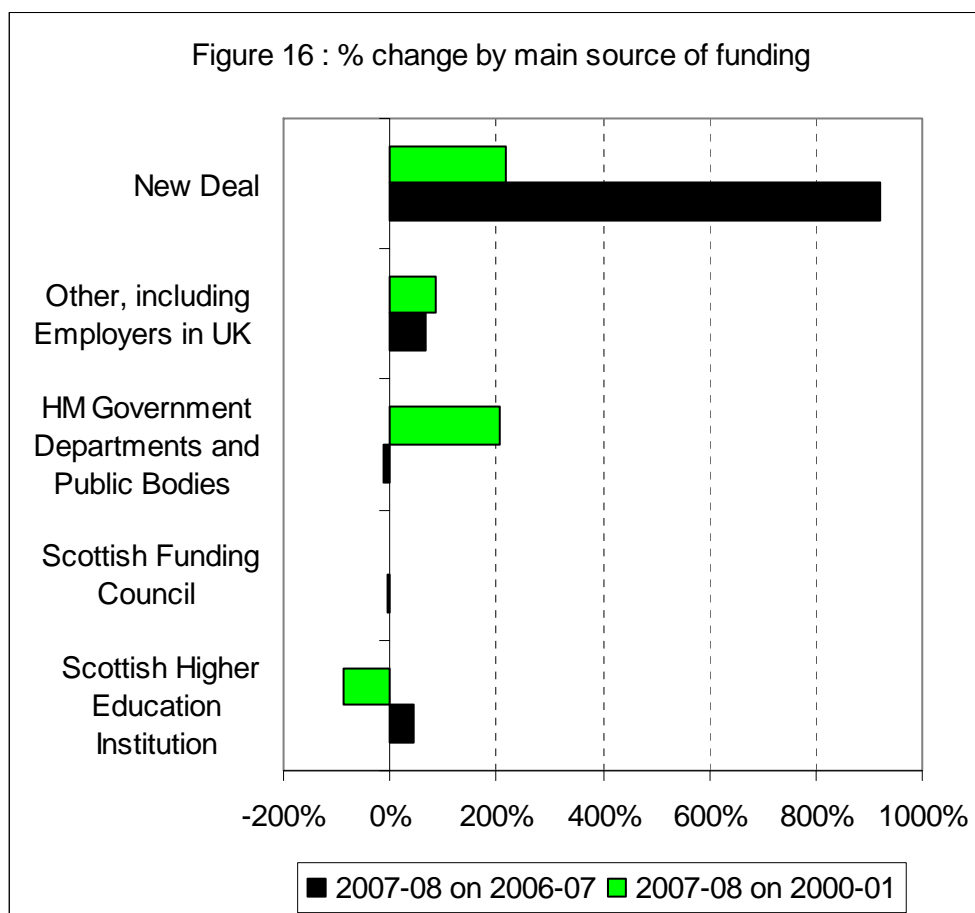
In 2007-08, 90% of the funding of the Further Education courses being taken in South Lanarkshire came from the Scottish Funding Council. A further 8% had their funding paid by UK Government departments & other public bodies and 1.6% had their courses funded by employers, with 0.3% having their courses funded through the New Deal and 0.1% from Higher Education institutions. Table 10 shows a breakdown of participants by the source of funding of their course

Table 10: Source of funding of courses in 2007-08

2007-08 Cost Recovery from	Numbers	%
Scottish Higher Education Institution	10	0.1%
Scottish Funding Council	18,043	90.5%
HM Government Departments and Public Bodies	1,508	7.6%
Other, including Employers in UK	319	1.6%
New Deal	51	0.3%
Local Education Authorities	-	0.0%
Other UK (non-Scottish) Educational Institution	-	0.0%
TOTAL	19,929	100%

Figure 16 shows the percentage change in funding of courses in South Lanarkshire over the 2006-07 to 2007-08 and 2000-01 to 2007-08 periods.

As this figure shows, over both periods there have been increases in the funding of courses from the New Deal, but from significantly low bases. There has also been an increase over both periods in funding of courses from Employers & others. Over the longer period there has been an increase in course funding from the UK Government & other Public Bodies. Funding from Scottish Higher Education Institutions rose over the short term but fell over the longer term. The numbers having their course funding paid by the Scottish Funding Council has hardly changed and this has accounted for over 90% of course funding over the entire period.



In terms of the source of fees by participants in Further Education, 41% (7,986) had their fees waived. A further 20% (4,034) had their fees paid by their Employer and 12% (2,330) were Self Financing. For 8%, the source of their fee payments was not known.

Table 11 shows a breakdown of the source of fees of Further Education participants in 2007-08 and the percentage changes over the 2006-07 to 2007-08 and 2000-01 to 2007-08 periods.

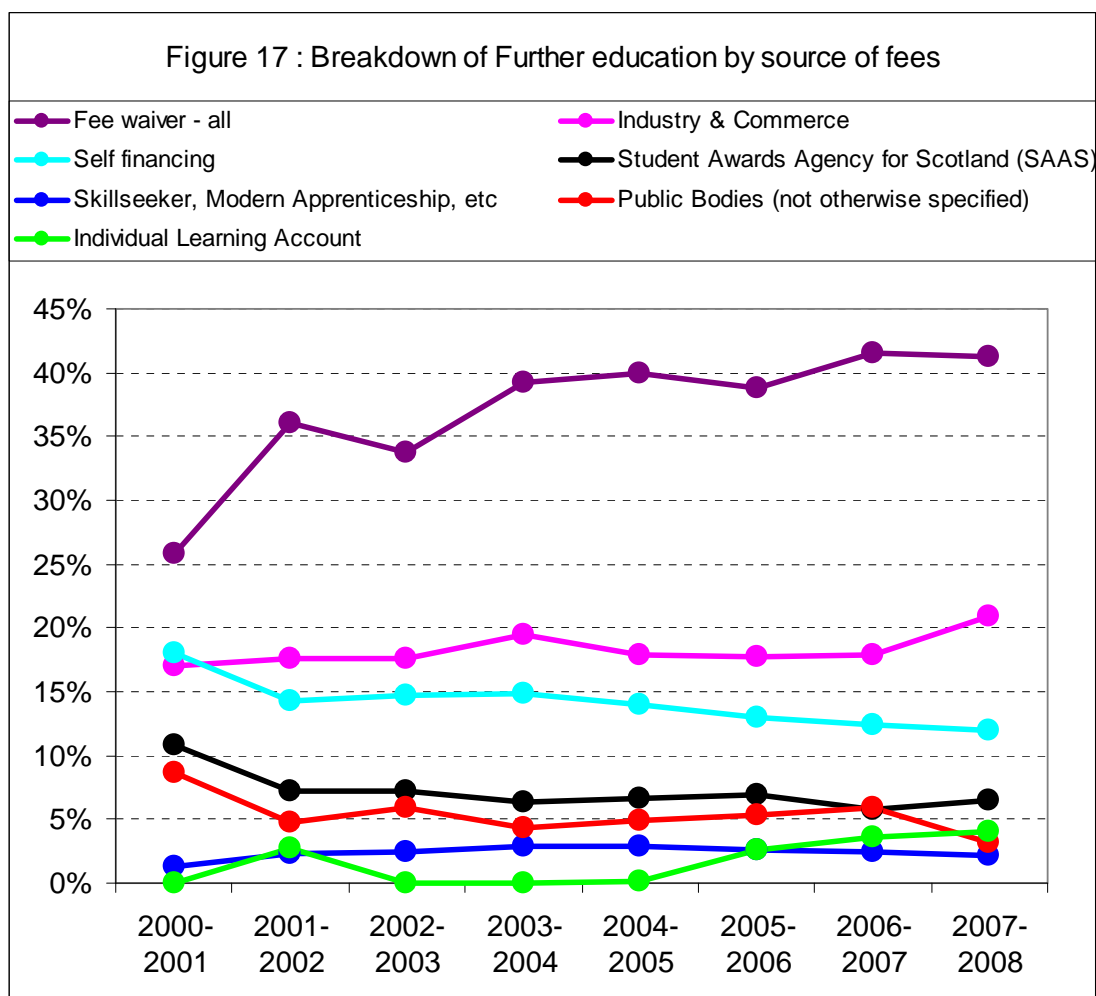
Table 11: Further education participants – source of fees

SOURCE OF FEES	Numbers	%	2006-07 to 2007-08 changes	2000-01 to 2007-08 changes
Student Awards Agency for Scotland (SAAS)	1,266	6.5%	7.2%	-37.3%
Skillseekers, Modern Apprenticeship, etc	432	2.2%	-14.6%	77.0%
Local Enterprise Company (LEC)	197	1.0%	-0.5%	27.1%
Public Bodies (not otherwise specified)	619	3.2%	-48.9%	-61.5%
European Union Funding	51	0.3%	-46.9%	-42.0%
UK Industry and Commerce	4,034	20.9%	8.7%	26.9%
Self Financing Student	2,330	12.0%	-9.6%	-30.8%
Scottish Local Authority Bursary	5	0.0%	-37.5%	0.0%
New Deal	52	0.3%	550.0%	-66.9%
Individual Learning Account	768	4.0%	3.1%	
Not Known	1,571	8.1%	-14.0%	35.4%
Fee waiver - all	7,986	41.3%	-7.1%	65.1%
TOTAL	19,929	100%	-3.8%	10.7%

As this table shows, over the 2006-07 to 2007-08 period, the number of participants in Further Education fell by 3.8%. There was a 49% fall in the numbers having their fees paid from Public bodies, 47% from European funding and 37% from Scottish Local Authority Bursaries. There was a 550% rise in the numbers having their fees paid by the New Deal – from a low base – an 8.7% rise in those having their fees paid from UK employers and a 7.2% rise from the Student Awards Agency for Scotland.

Over the 2000-01 to 2007-08 period there was a 10.7% rise in the number of participants. There was a 77% rise in the number having their fees paid from Modern Apprenticeships, Skillseekers, etc., a 65% rise in the numbers having their fees waived and a 27% increase in those who had their fees paid by Local Enterprise Companies. There was a 67% fall in those having their fees paid through the New Deal, a 61% fall in those having their fees paid from Public Bodies and a 37% fall in those whose fees were paid by the Student Awards Agency for Scotland.

Figure 17 shows the breakdown of where the fees of those participating in Further Education came from since 2000-01. As this figure shows, the proportion having their fees waived has risen from just over 25% to just over 40% over this period. Those who were Self financing has been declining almost throughout the period and there have been declines in those having their paid fees by Student Awards Agency for Scotland. The proportion having their fees paid by Other Public Bodies had been rising since 2003-04 but fell in 2007-08. The proportion having their fees paid from the Individual Learning Account system has risen since 2004-05 from nothing to nearly 5% by 2007-08.



7. PARTICIPATION IN FURTHER EDUCATION BY SUBJECT

In 2007-08, the subject taken by the greatest number of participants in Further Education from South Lanarkshire was Personal Development, Family Care, Personal Care & Appearance – taken by 4,587 students or 23% of the total. The next most popular subjects being taken were Healthcare, Medicine and Health & Safety (3,143, 15.8%), IT & Information (2,086, 10.5%), Catering, Food, Leisure and Tourism (1,709 or 8.6%) and Construction & Property (1,571, 7.9%). The subjects being taken by the least number of people were Humanities (18, or 0.1%), Oil, Mining, Plastics & Chemicals (39 or 0.2%) and Services to Industry (42, 0.2%).

Table 12 shows the breakdown of Further Education participants in 2007-08 by subject and the percentage changes in the numbers taking each subject over the 2006-07 to 2007-08 and 2000-01 to 2007-08 periods.

Over the 2006-07 to 2007-08 period, the numbers participating in Further Education fell by 3.8%. Also over this period, the numbers taking Environmental protection, security, energy & cleaning rose by 66%.

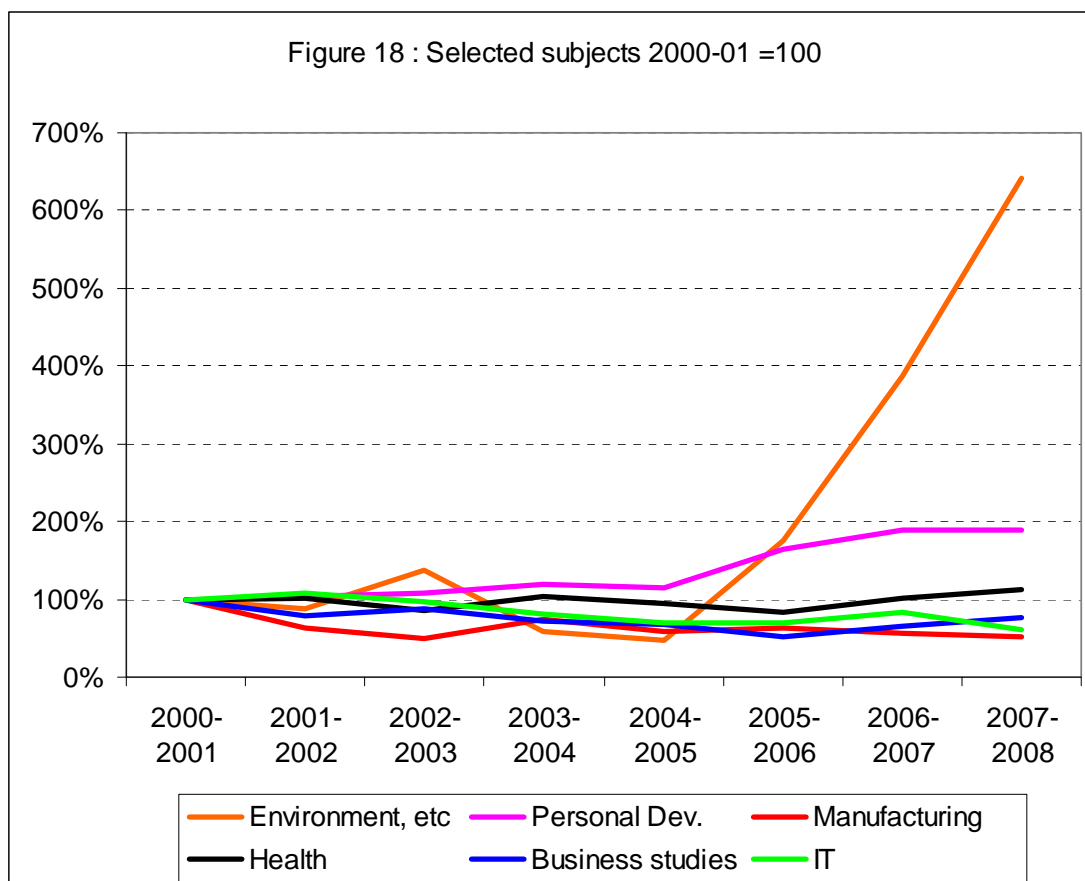
There was a 46% increase in those studying Performing Arts, a 42% rise in those taking Selling, marketing & distribution and a 14% rise in the numbers taking Authorship, publishing, media & photography. There was a 27% fall in the numbers taking IT & information, a 26% fall in those taking Services to industry and a 25% fall in those studying Catering, food, leisure services & tourism.

Table 12: Further Education subjects taken in 2007-08

Subject	Numbers	%	% change 2006-07 to 2007-08	% change 2000-01 to 2007-08
Business Studies, etc	1,177	5.9%	18.2%	-24.1%
Sales & Distribution	61	0.3%	41.9%	-37.1%
IT and Information	2,086	10.5%	-26.6%	-39.6%
Humanities	18	0.1%	-21.7%	-28.0%
Social Sciences	274	1.4%	11.4%	-44.6%
Area & Cultural studies, etc	642	3.2%	-22.9%	63.4%
Education / Teaching	311	1.6%	4.0%	-50.8%
Personal Development, etc	4,587	23.0%	0.4%	89.2%
Arts & Crafts	460	2.3%	-13.7%	45.6%
Media & Publishing	463	2.3%	13.8%	1.3%
Performing arts	433	2.2%	45.8%	101.4%
Sports, etc	393	2.0%	-22.6%	26.8%
Catering, Leisure & Tourism	1,709	8.6%	-25.5%	-14.0%
Health and Health & Safety	3,143	15.8%	10.3%	12.1%
Environmental, Security, etc.	302	1.5%	65.9%	542.6%
Sciences & Mathematics	247	1.2%	-4.6%	-0.8%
Agriculture & animal care	367	1.8%	13.6%	114.6%
Construction & Property	1,571	7.9%	4.8%	35.3%
Services to Industry	42	0.2%	-26.3%	-58.8%
Manufacturing	138	0.7%	-8.0%	-48.5%
Engineering	1,383	6.9%	0.6%	-5.7%
Mining / Plastics / Chemicals	39	0.2%	0.0%	160.0%
Transport services	85	0.4%	1.2%	11.8%
TOTAL	19,929	100%	-3.8%	10.7%

Between 2000-01 and 2007-08, there was a 10.7% rise in the numbers participating in Further Education. However, there was a 543% rise in the numbers studying Environmental protection, security, energy & cleaning, a 160% rise in those studying Oil, mining, plastics & chemicals, a 115% rise in those studying Agriculture, horticulture & animal care and a 101% rise in those studying the Performing Arts. There was a 59% fall in those studying Services to Industry and a 48% fall in those taking Manufacturing & Production subjects as well as a 44% fall in those studying Social Sciences. Figure 18 shows the numbers taking certain specific subjects with their 2000-01 levels set at 100.

As this figure shows, the numbers studying Environmental protection, etc, has increased significantly since 2004-05 – to nearly seven times the number in 2000-01. The numbers taking Personal development, etc, is also nearly twice the level of 2000-01 in 2007-08. There have been almost steady declines in those studying Manufacturing, IT and Business studies. The numbers studying Health, etc, stayed below their 2000-01 levels from 2003-04 but rose above these levels in both 2006-07 and 2007-08.



7. PARTICIPATION IN FURTHER EDUCATION BY AREA

In 2007-08, the largest numbers participating in Further Education lived in East Kilbride – 4,987 or 25.8% of the South Lanarkshire total. Next came Hamilton with 3,088 (16%), followed by 2,251 (11.6%) from Rutherglen, 8.9% (1,713) from Cambuslang and 6.5% (1,265) from Blantyre.

The smallest number of participants in Further Education were from Uddingston with 298 (1.5% of the total) and 353 from Bothwell (1.8%).

Table 13 shows the numbers participating in Further Education in 2007-08 by area of residence and gender. Table 14 shows the percentage of those participating by gender in South Lanarkshire in 2007-08 living in each areas and the gender breakdown of participation within each community in 2007-08.

Table 13: Participation in Further Education in 2007-08

COMMUNITY	MALE	FEMALE	TOTAL	% total
Uddingston	134	164	298	1.5%
Bothwell	156	197	353	1.8%
Blantyre	535	730	1,265	6.5%
Cambuslang	780	933	1,713	8.9%
Rutherglen	964	1,287	2,251	11.6%
East Kilbride	2,192	2,795	4,987	25.8%
Strathaven	253	291	544	2.8%
Lesmahagow	220	279	499	2.6%
Lanark	376	543	919	4.8%
Clydesdale East	438	520	958	5.0%
Hamilton	1,415	1,673	3,088	16.0%
Carluke	504	612	1,116	5.8%
Larkhall	333	511	844	4.4%
Stonehouse	184	315	499	2.6%
Total	8,745	11,184	19,929	100.0%

Table 14: Participant breakdown in 2007-08 in percentage terms

COMMUNITY	MALE	FEMALE	% MALE	% FEMALE
Uddingston	1.6%	1.5%	45.0%	55.0%
Bothwell	1.8%	1.8%	44.2%	55.8%
Blantyre	6.3%	6.7%	42.3%	57.7%
Cambuslang	9.2%	8.6%	45.5%	54.5%
Rutherglen	11.4%	11.9%	42.8%	57.2%
East Kilbride	25.8%	25.8%	44.0%	56.0%
Strathaven	3.0%	2.7%	46.5%	53.5%
Lesmahagow	2.6%	2.6%	44.1%	55.9%
Lanark	4.4%	5.0%	40.9%	59.1%
Clydesdale East	5.2%	4.8%	45.7%	54.3%
Hamilton	16.7%	15.4%	45.8%	54.2%
Carluke	5.9%	5.6%	45.2%	54.8%
Larkhall	3.9%	4.7%	39.5%	60.5%
Stonehouse	2.2%	2.9%	36.9%	63.1%
Total	100.0%	100.0%	43.9%	56.1%

Of Male participants in Further Education in 2007-08, 25.8% were from East Kilbride, 16.7% from Hamilton, 11.4% from Rutherglen and 9.2% from Cambuslang.

Of Female participants in 2007-08, 25.8% were from East Kilbride, 15.4% from Hamilton, 11.9% from Rutherglen and 8.6% from Cambuslang.

Overall, 56% of participants in Further Education in South Lanarkshire in 2007-08 were Women. At a community area level, this varied from 63% in Stonehouse and 60% in Larkhall to 53% in Strathaven and 54% in Hamilton.

Men accounted for 44% of all participants in 2007-08 in Further Education, but in Strathaven and Hamilton the figure was 46.5% and 45.8% respectively, whilst in Larkhall, men accounted for 39% of participants and in Stonehouse for 37%.

In 2007-08, the highest participation rate – at a community level and based on the population aged 14 & over – was in Cambuslang at 8.6%. Next came East Kilbride at 8.1%, Rutherglen at 8% and Blantyre at 7.7%. The lowest Further Education participation rates were in Uddingston at 6%, Bothwell at 6.3% and Larkhall at 6.5%.

In terms of Male participation rates in 2007-08, the highest rates were in Cambuslang at 8.5%, East Kilbride at 7.6%, Rutherglen at 7.5% and Lesmahagow at 7.2%. The lowest Male rates were in Larkhall and Stonehouse, both at 5.6%.

Cambuslang had the highest Female participation rate in Further Education in 2007-08 at 9%. Next came Stonehouse at 8.8%, East Kilbride at 8.7%, Rutherglen at 8.6% and Blantyre at 8.4%. The lowest rates were in Strathaven a 6.2% and Uddingston at 6.4%.

Table 15: Participation rates in 2007-08 by community

COMMUNITY	MALE	FEMALE	TOTAL
Uddingston	5.7%	6.4%	6.0%
Bothwell	6.1%	6.7%	6.3%
Blantyre	7.1%	8.4%	7.7%
Cambuslang	8.5%	9.0%	8.6%
Rutherglen	7.5%	8.6%	8.0%
East Kilbride	7.6%	8.7%	8.1%
Strathaven	5.8%	6.2%	5.9%
Lesmahagow	7.2%	7.7%	7.3%
Lanark	5.9%	7.8%	6.8%
Clydesdale East	6.3%	7.3%	6.7%
Hamilton	7.1%	7.5%	7.2%
Carluke	6.4%	7.3%	6.8%
Larkhall	5.6%	7.5%	6.5%
Stonehouse	5.6%	8.8%	7.1%
Total	7%	8%	7.4%

Over the 2006-07 to 2007-08 period, the numbers participating in Further Education in South Lanarkshire fell by 23.4% in Uddingston, by 22% in Lesmahagow and by 18.7% in Clydesdale East.

No community experienced a rise, but the smallest percentage declines were in Bothwell at 0.3%, Rutherglen at 3.3% and Hamilton at 3.7%.

In terms of Male participation over this period, the numbers fell by 22.1% in Uddingston, 21.7% in Stonehouse and 16.6% in Cambuslang but actually increased in three areas – by 8.3% in Bothwell, by 3% in Rutherglen and by 1.4% in Hamilton.

No area saw an increase in Female participation in Further Education, with the greatest percentage falls being in Lesmahagow, down 29.5% followed by falls of 24.4% in Uddingston and 21.7% in Clydesdale East. The smallest percentage falls were in Stonehouse, at 6% and in Bothwell at 6.2%.

Table 16 shows the percentage change in the numbers participating in Further Education by gender in each community between 2006-07 and 2007-08.

Table 16: % change in participation 2006-07 to 2007-08

COMMUNITY	MALE	FEMALE	TOTAL
Uddingston	-22.1%	-24.4%	-23.4%
Bothwell	8.3%	-6.2%	-0.3%
Blantyre	-14.7%	-13.8%	-14.2%
Cambuslang	-16.6%	-6.5%	-11.4%
Rutherglen	3.0%	-7.5%	-3.3%
East Kilbride	-8.7%	-13.4%	-11.4%
Strathaven	-9.6%	-17.1%	-13.8%
Lesmahagow	-10.2%	-29.5%	-22.2%
Lanark	-12.1%	-15.2%	-14.0%
Clydesdale East	-15.0%	-21.7%	-18.7%
Hamilton	1.4%	-7.7%	-3.7%
Carluke	-5.3%	-13.4%	-9.9%
Larkhall	-15.3%	-16.5%	-16.0%
Stonehouse	-21.7%	-6.0%	-12.5%

Information on the residences of participants in Further education is not available prior to 2003-04 and so Table 17 shows the percentage change by gender in the numbers participating in Further Education between 2003-04 and 2007-08.

Over the 2003-04 to 2007-08 period, only two areas saw the numbers participating in Further Education rise – by 6.2% in Stonehouse and by 4% in Cambuslang. All other areas experienced a decline, with the greatest percentage declines being in Carluke, down 23.6%, Uddingston down 23.4% and Bothwell, down 16.5%.

In terms of Female participation in Further Education, only two areas showed an increase over this period, up by 15% in Stonehouse and by 6.2% in Larkhall.

All other areas experienced a decline, with the greatest declines being in Uddingston (down 36.2%), Carluke (down 26.4%) and Bothwell (down 25.1%).

Between 2003-04 and 2007-08, the numbers of Men participating in Further Education increased in five areas – with the greatest percentage increases being in Lesmahagow, up 14.6%, Cambuslang, up 9.6%, Hamilton, 4.3% and Uddingston, up 1.5%. The largest percentage declines were in Carluke, down 19.9%, Blantyre, down 11.4% and Larkhall, down 8.5%.

Table 17: % change in participation 2003-04 to 2007-08

COMMUNITY	MALE	FEMALE	TOTAL
Uddingston	1.5%	-36.2%	-23.4%
Bothwell	-2.5%	-25.1%	-16.5%
Blantyre	-11.4%	-5.7%	-8.2%
Cambuslang	9.6%	-0.2%	4.0%
Rutherglen	0.5%	-7.9%	-4.5%
East Kilbride	0.5%	-5.2%	-2.8%
Strathaven	-8.3%	-13.4%	-11.1%
Lesmahagow	14.6%	-19.6%	-7.4%
Lanark	-10.0%	-16.8%	-14.2%
Clydesdale East	-7.4%	-21.2%	-15.4%
Hamilton	4.3%	-5.2%	-1.1%
Carluke	-19.9%	-26.4%	-23.6%
Larkhall	-8.5%	6.2%	-0.1%
Stonehouse	-6.1%	15.0%	6.2%

Table 18 shows the participation rate for the 14+ population at a community level since 2003-04.

As this table shows, the participation rate in Uddingston and Bothwell has gone from being above the South Lanarkshire average in 2003-04 and 2004-05 to below it in all subsequent years.

The rate in Blantyre was above the average until 2007-08 but is now at the average level.

The rates in Cambuslang, Rutherglen and East Kilbride have always been above the average whereas the rates in Strathaven and Larkhall have always been below.

Table 18: Participation rates in Further Education by community area

COMMUNITY	2003-2004	2004-2005	2005-2006	2006-2007	2007-2008
Uddingston	8.2%	7.5%	6.4%	7.9%	6.0%
Bothwell	7.7%	7.5%	6.0%	6.4%	6.3%
Blantyre	8.8%	8.5%	8.1%	9.0%	7.7%
Cambuslang	9.1%	8.6%	8.2%	10.0%	8.6%
Rutherglen	8.2%	8.2%	7.7%	8.2%	8.0%
East Kilbride	8.4%	7.7%	7.2%	9.1%	8.1%
Strathaven	6.8%	6.5%	5.5%	6.9%	5.9%
Lesmahagow	8.4%	11.0%	7.1%	9.6%	7.3%
Lanark	8.2%	6.8%	6.6%	7.9%	6.8%
Clydesdale East	8.4%	7.4%	7.8%	8.4%	6.7%
Hamilton	7.6%	6.8%	6.7%	7.6%	7.2%
Carluke	9.1%	7.8%	7.4%	7.6%	6.8%
Larkhall	6.5%	6.3%	6.1%	7.7%	6.5%
Stonehouse	7.1%	6.9%	7.2%	8.1%	7.1%
Total	7.5%	7.1%	6.8%	8.0%	7.7%