

Introduction

It is important to note that in October 2003 Strathclyde Police South Lanarkshire Division introduced the new Scottish Crime Recording Standard – the standard was implemented across all police forces on 1st April 2004. Until its introduction, before recording an incident as a crime the police required evidence that a crime had been committed - as opposed to reporting an accident or loss - they would not take the victim's account of the incident unsupported.

Under the new system any report of a crime will be recorded at face value. This is seen as principally impacting on low level crimes only – vandalism, theft from cars, disorder, etc. The new approach is now seen as more victim-centred. However this development means that trends over time are distorted by the new system – and to varying effect for individual crime types. As South Lanarkshire introduced the system earlier than elsewhere, comparisons with other areas will also be affected.

Another major impact on the recorded crime figures which makes historical comparisons difficult is the rise in the issuing of Fixed Penalty Notices, which means that these offences do not appear in the recorded crime figures. The use of these Notices will particularly impact on the recording of Miscellaneous and Motoring Offences. However, the figures contained in this report have been adjusted to take account of this factor.

It is also important to recognise that the reporting of crimes can be affected by a number of factors – including the fact that different communities can have different 'tolerance' levels for crimes & offences and this can affect the level of incidents reported to the police and therefore some of the differences between areas may reflect this 'toleration' factor.

Summary

- ◆ In 2007-08 there were 38,167 crimes and offences recorded by Strathclyde Police in South Lanarkshire. Of these, 19,885 (52.1%) were Crimes and 18,282 (47.9%) were Offences.
- ◆ The largest single group of crimes & offences committed in South Lanarkshire in 2007-08 were Miscellaneous Offences (Breaches of the Peace, Public drinking, Race crime, etc.). There were 12,547 such offences recorded – 32.9% of the total. Next came Crimes of Dishonesty (Housebreaking, shoplifting, etc.) with 7,280 (19.1%) and then Acts of Vandalism, malicious mischief, fire raising, etc with 7,048 such crimes recorded, 18.5% of all crimes and offences. Motoring offences were the next largest category with 5,735 offences (15%).
- ◆ The smallest numbers of crimes recorded in 2007-08 were of acts of Indecency – 169 or 0.4% of the total - and Crimes of Non-sexual Violence (730 or 1.9% of the total).

- ◆ During 2007-08, a total of 8,567 Crimes were cleared up by the police – representing 43.1% of all recorded crimes. In relation to Offences, the police cleared up 16,266 – representing 89% of all recorded offences.
- ◆ Overall in 2007-08, there were 64.6 crimes per 1,000 residents in South Lanarkshire and 59.4 offences per 1,000 residents. Miscellaneous offences had the highest rate of crimes per 1,000 – with 40.8 recorded offences per 1,000 residents in South Lanarkshire in 2007-08. Next came Crimes of Dishonesty at 23.7 per 1,000 and then Vandalism, etc. at 22.9 per 1,000. There were only 0.5 crimes of Indecency per 1,000 residents in South Lanarkshire and only 2.4 Violent crimes per 1,000 people in 2007-08.
- ◆ There were 19,885 recorded Crimes in South Lanarkshire in 2007-08 – the lowest number recorded under the new system and a decline of 958, or 4.6%, from the 2006-07 level. The number of Offences in 2007-08 was 18,282 – again the lowest since the new recording system was introduced in 2004-05 and a fall of 1,686 or 8.4% from the 2006-07 level.
- ◆ The Detection rate for Crimes in 2007-08 was 43.1%. This was up 2 percentage points from the figure for 2006-07 and is the 3rd highest crime detection rate for South Lanarkshire since 1999-2000. The Detection rate for Crimes has risen and while the figure does tend to oscillate this would appear to suggest that the general downward trend has come to an end.
- ◆ In relation to the Detection rate for Offences, this was 89% in 2007-08. This is the lowest detection rate for offences recorded in South Lanarkshire since 2004-05 when the new recording system was fully introduced and since 1999-2000. The Detection rate for Offences has now fallen for the third year in a row to its lowest level ever.
- ◆ Comparing 2004-05 with 2007-08 shows that overall the number of all Crimes & Offences recorded in South Lanarkshire was down 3,243, or 7.8%. The numbers of Crimes were down by 1,096 or 5.2% and the number of Offences by 2,147, or 10.2%.
- ◆ Over this period, crimes of Non-sexual Violence were down 712 or 49%. Crimes of Indecency were down 55, or 24% and crimes of Dishonesty by 846 or 10%. Vandalism & Fire Raising crimes were down 286, or 4%. The only major crime group to show an increase was Drugs & Other crimes, up 803, or 21%. In terms of Offences, Miscellaneous offences were down 1,643 or 11% over the period and Motoring offences were down 504 or 8%.
- ◆ Over the 2006-07 to 2007-08 period the overall the number of all Crimes & Offences recorded in South Lanarkshire was down 2,644, or 6.5%. The number of Crimes was down by 958 or 4.6% and the number of Offences by 1,686, or 8.4%. Crimes of Non-sexual Violence were down 44%. Crimes of Indecency were down 13% and crimes of Dishonesty by 11%. Vandalism & Fire Raising crimes were down 1.5%. The only major crime group to show an increase was Drugs & Other crimes, up 17%.

- ◆ Miscellaneous offences were down 11% over the period and Motoring offences were down 1.4%.
- ◆ In 2007-08, Hamilton had the largest number of recorded **Crimes** at 4,922 followed by East Kilbride with 3,709, Rutherglen with 2,824, Cambuslang with 1,309 and then Lanark with 1,251. The smallest numbers of recorded crimes were for Stonehouse at 291, Uddingston with 294 and then Strathaven at 331.
- ◆ Hamilton accounted for 24.8% of all crimes, followed by East Kilbride with 18.7%, Rutherglen with 14.2% and then Cambuslang with 6.6% and Lanark with 6.3% of all crimes in South Lanarkshire.
- ◆ In terms of **Offences**, Hamilton again had the greatest number with 4,349 offences. Next came East Kilbride with 3,221, Rutherglen at 2,476, Lanark at 1,345 and Cambuslang with 1,195. The lowest numbers of offences were in Stonehouse with 251, Uddingston at 290 and Bothwell at 304.
- ◆ Hamilton accounted for 23.8% of all offences in South Lanarkshire, with East Kilbride accounting for 17.6%, Rutherglen for 13.5%, Lanark for 7.4% and Cambuslang for 6.5%.
- ◆ In South Lanarkshire in 2007-08, 52.1% of all recorded crimes & offences were Crimes. In 7 community areas Crimes accounted for a greater share than the South Lanarkshire average of all crimes and offences. In Larkhall, 55.3% were Crimes, in Stonehouse the figure was 53.7%, in East Kilbride 53.3% and in Hamilton, 53.1%. In Clydesdale East in 2007-08 only 46.9% of its total of crimes & offences were Crimes, as were only 47.9% in Carluke and 48.2% in Lanark and Strathaven
- ◆ In terms of **Crime rates per 1,000 population**, Hamilton had the highest figure of 98.5 recorded crimes per 1,000, followed by Rutherglen at 84.2 per 1,000, Larkhall at 75.9 per 1,000, Lanark at 71 per 1,000 and Blantyre at 68.2 per 1,000. All the other communities had crime rates below the South Lanarkshire average. The lowest rates were in Strathaven, at 29.8 per 1,000, and Stonehouse, at 34.5 per 1,000.
- ◆ The recorded crime rate in Hamilton was over 50% higher than the South Lanarkshire average, with the rate in Rutherglen being nearly a third higher and in Larkhall nearly a fifth higher. The rate in Strathaven was less than half the average and in Stonehouse just over half the South Lanarkshire average.
- ◆ In 2007-08, Hamilton had the highest rate of **Offences per 1,000 residents** – at 87.1 per 1,000. The next highest rates were in Lanark at 76.3 per 1,000 and Rutherglen at 73.8 per 1,000. All were above the South Lanarkshire average of 59.4 per 1,000 as were the rates in Blantyre at 66.3 per 1,000 and Larkhall at 61.3 per 1,000.
- ◆ Hamilton's Offences rate per 1,000 was nearly 50% higher than the South Lanarkshire average, with the rate in both Lanark and Rutherglen being over a quarter higher and in Blantyre over a tenth higher. The rate in Larkhall was just 3% higher than the average.

- ◆ The lowest Offences rate per 1,000 was in Stonehouse at 29.7 per 1,000 followed by Strathaven at 32 per 1,000. The Stonehouse rate was half the South Lanarkshire average and the Strathaven rate was just over half the overall average.
- ◆ Although, overall, Hamilton accounted for 24.8% of All crime in 2007-08, it accounted for 32% of Drugs & Other Crimes and 25.5% of crimes of Violence. East Kilbride accounted for 18.7% of all crimes, but 21% of Acts of Vandalism and 20% of Violent crime, but only 12% of Drugs & other crimes. Rutherglen accounted for 14.2% of all crimes but 18% of all crimes of Violence. Lanark accounted for only 6.3% of all crimes but 16% of all crimes of Indecency.
- ◆ The crime detection rate in Hamilton in 2007-08 was over a quarter higher than the South Lanarkshire average and in Lanark it was just under 2% higher – all other areas had lower crime detection rates than in South Lanarkshire as a whole. The detection rate in Rutherglen was just below the average but East Kilbride's detection rate was over a tenth lower.
- ◆ The lowest crime detection rates were in Bothwell, at under two-thirds of the average, and in Strathaven at just over two-thirds of the South Lanarkshire average.
- ◆ Since 2004-05, out of 14 communities only four saw their levels of **All Crimes & Offences** higher in 2007-08 than in 2004-05. Stonehouse saw a 22% rise, followed by Rutherglen with a 7% rise, Carluke with a 4% rise and Lesmahagow with a 0.2% rise. The largest percentage falls were in Strathaven – down 37% - Blantyre (down 20%) and in East Kilbride (down 18%)
- ◆ In relation to **Recorded Crimes**, there were five communities out of fourteen where the number of crimes recorded in 2007-08 was above that in 2004-05. In the case of Stonehouse the increase was 26.5% and Lesmahagow experienced a 21% rise. Hamilton saw a 4.7% rise. Cambuslang experienced a 24% fall in recorded crimes between these two dates, with Blantyre seeing a 23.8% fall and Strathaven a 20% fall. In South Lanarkshire as a whole, recorded crime fell by 5%.
- ◆ In relation to **Recorded Offences**, the number has higher in three communities in 2007-08 compared to the 2004-05 levels – there was a 16.7% rise in Stonehouse, an 11% rise in Rutherglen and a 6% rise in Carluke. The largest percentage falls in the remaining 11 community areas were in Strathaven, down 47% and in East Kilbride, down 25%. Blantyre saw a decline of 16%. The overall South Lanarkshire decline was 10%.
- ◆ Carluke, Rutherglen and Lesmahagow are the only communities where the total number of crimes & offences has been above the 2004-05 level in every year since then. Strathaven is the only community to see the number of crimes & offences fall each year from its 2004-05 level. Rutherglen is the only area where the number of recorded offences has remained above its 2004-05 level each year since then, with Strathaven

being the only area where the number of offences has fallen consistently each year from its 2004-05 level.

- ◆ In terms of Detection rates, the **detection rate for All crimes & offences** has been above the 2004-05 levels every year since then in both Hamilton and Uddingston. Stonehouse and Lesmahagow have both seen their detection rate fall each year since 2004-05.
- ◆ In terms of the **Detection rate for crimes**, Hamilton and Uddingston have seen their detection rates remain above their 2004-05 level. Stonehouse has seen its crime detection rate fall each year since 2004-05.
- ◆ In terms of the **Detection rate for offences**, Carluke and Cambuslang are the only areas where the detection rate has consistently been above its 2004-05 level – and in the case of Carluke, the detection rate has increased each year. Bothwell and Lesmahagow are the only areas where the detection rate has consistently fallen each year from its 2004-05 level.
- ◆ In terms of **Crimes at a beat level**, the beat covering Hamilton Town Centre was where 6.2% of all crimes were recorded in 2007-08, followed by the Greenhills area of East Kilbride and Carluke Town Centre, each with a 4% share, Lanark Town Centre at 3.9% and then Whitehill-Burnbank with a 3.6% share. The Symington, Crossford and Thorntonhall beats had the smallest number of crimes recorded in 2007-08.
- ◆ In relation to **Offences at a beat level**, 7.8% of all offences recorded by the police in 2007-08 took place in Hamilton Town Centre, followed by 5.3% in Lanark Town Centre, 5.1% in Carluke Town Centre and 3.9% in East Kilbride Town Centre. Next came the Whitehill-Burnbank with a 3.4% share and then Rutherglen Gallowflat-Clinicarhill area with a 3.2% share. Again the Symington, Thorntonhall and Crossford beats had the lowest number of offences recorded in South Lanarkshire at a beat level in 2007-08.
- ◆ In 2007-08, the overall South Lanarkshire **incidence of crimes** was 64.6 per 1,000. At a police beat level, the highest figures were for East Kilbride Town Centre, at 753 per 1,000 residents and Hamilton Town Centre at 394 per 1,000. It should be noted that these are areas with large numbers of premises that are main locations for criminal activity and also have low resident population levels, thus giving them high incidence rates. After these two Town Centres, the highest incidence rates per 1,000 residents were in Shawfield-Burnhill at 213 per 1,000, followed by Whitehill-Burnbank at 180 per 1,000 and Rigside at 179 per 1,000.
- ◆ The lowest incidences of All crimes per 1,000 residents were in the Landward area of Biggar at 10.3 per 1,000, followed by the Landward area of Carluke at 13.7 crimes per 1,000 and Symington at 14.8 per 1,000.

- ◆ In 2007-08, the overall South Lanarkshire **incidence of offences** was 59.4 per 1,000. At a police beat level, the highest figures were for East Kilbride Town Centre, at 1,000 per 1,000 residents and Hamilton Town Centre at 460 per 1,000. It should be noted that these are areas with large numbers of premises that are main locations for offending activity and also have low resident population levels, thus giving them high incidence rates. After these two Town Centres, the highest incidence rates per 1,000 residents were in the East Kilbride Village area at 166 per 1,000, Almada Street at 165 per 1,000 and the Whitehill-Burnbank beat at 157 per 1,000.
- ◆ The lowest rates of All Offences per 1,000 residents were in the Glassford-Chapelton beat at 9.1 per 1,000, followed by a rate of 10.7 per 1,000 in the Landward area of Carluke, 12 per 1,000 in Symington and 18 per 1,000 in the Quarter beat.
- ◆ Over the 2004-05 to 2007-08 period, 32 beats experienced an increase in the number of recorded Crimes between 2004-05 and 2007-08. There was one beat – Crossford – which experienced no change and in the other 34 beats the number of crimes fell.
- ◆ Overall, in terms of Offences, of the 67 police beats in South Lanarkshire, 23 experienced rises and 44 experienced falls.
- ◆ Looking at selected specific recorded Anti-Social Behaviour crimes & offences in 2007-08, 18,624 crimes & offences fell into this grouping. Of them, 36% (6,682) were acts of Vandalism, 26% were Breaches of the Peace (4,867), followed by 19% being Petty Assaults (3,478) and 14% being Public Drinking (2,660).
- ◆ Overall, the rate of these forms of Anti-Social Behaviour in 2007-08 in South Lanarkshire was 60 per 1,000 population. This varied from a figure of 21.7 per 1,000 for acts of Vandalism and 15.8 per 1,000 for Breaches of the Peace to 11.3 per 1,000 for Petty Assault and 8.6 per 1,000 for Public drinking offences.
- ◆ The Hamilton Town Centre beat had the largest number with 987 (5% of the total). Carluke Town Centre came next with 870 (4.7%) followed by Greenhills with 847 (4.5%) and Lanark Town Centre with 817 (4.3%). The smallest number of Anti-Social Behaviour crimes & offences were recorded in Abington (18), Crossford (11) and Thorntonhall (7).
- ◆ In relation to the incidence of the main forms of police recorded Anti-Social Behaviour in 2007-08, the highest rates were again in East Kilbride and Hamilton Town Centres, at 788 per 1,000 and 318 per 1,000 respectively. The next highest rates were in Whitehill-Burnbank at 164.9 per 1,000, followed by Almada Street at 138.1 per 1,000 and The Village in East Kilbride at 134 per 1,000. The lowest rates of recorded Anti-Social Behaviour crimes & offences were in the Landward area of Biggar at 7.9 per 1,000, followed by the Landward area of Carluke at 10.6 per 1,000 and then Glassford-Chapelton at 10.8 per 1,000.

Overall Recorded Crime in 2007-08

In 2007-08 there were 38,167 crimes and offences recorded by Strathclyde Police in South Lanarkshire. Of these, 19,885 (52.1%) were Crimes and 18,282 (47.9%) were Offences.

Table 1 shows the breakdown of crimes & offences recorded in South Lanarkshire in 2007-08 by main crime group.

As this table shows, the largest single group of crimes & offences committed in South Lanarkshire in 2007-08 were Miscellaneous Offences (Breaches of the Peace, Public drinking, Race crime, etc.). There were 12,547 such offences recorded – 32.9% of the total. Next came Crimes of Dishonesty (Housebreaking, shoplifting, etc.) with 7,280 (19.1%) and then Acts of Vandalism, malicious mischief, fire raising, etc with 7,048 such crimes recorded, 18.5% of all crimes and offences. Motoring offences were the next largest category with 5,735 offences (15%).

The smallest numbers of crimes recorded in 2007-08 were of acts of Indecency at 169 (or 0.4% of the total) and Crimes of Non-sexual Violence at 730 (1.9% of the total).

During 2007-08 a total of 8,567 Crimes were cleared up by the police – representing 43.1% of all recorded crimes. In relation to Offences, the police cleared up 16,266 – representing 89% of all recorded offences.

Table 1: Recorded crime in South Lanarkshire in 2007-08

2007-08	Number of crimes / offences	% of Total
Violent crime (Non-sexual)	730	1.9%
Indecency	169	0.4%
Dishonesty	7,280	19.1%
Vandalism, malicious mischief, etc.	7,048	18.5%
Drugs & Other crimes	4,584	12.0%
TOTAL CRIMES	19,855	52.1%
Miscellaneous offences	12,547	32.9%
Motoring offences	5,735	15.0%
TOTAL OFFENCES	18,282	47.9%
ALL CRIMES & OFFENCES	38,167	100%

Overall in 2007-08 there were 64.6 crimes per 1,000 residents in South Lanarkshire and 59.4 offences per 1,000 residents. Table 2 shows the main crimes & offences calculated on a rate per 1,000 resident basis.

Table 2: Crimes & Offences per 1,000 residents in 2007-08

Crime / Offence	Rate per 1,000
Violent crime (Non-sexual)	2.4
Indecency	0.5
Dishonesty	23.7
Vandalism, malicious mischief, etc.	22.9
Drugs & Other crimes	14.9
Total Crimes	64.6
Miscellaneous offences	40.8
Motoring offences	18.6
Total Offences	59.4

As the above table shows, Miscellaneous offences had the highest rate of crimes per 1,000 – with 40.8 recorded offences per 1,000 residents in South Lanarkshire in 2007-08. Next came Crimes of Dishonesty at 23.7 per 1,000 and then Vandalism, etc. at 22.9 per 1,000.

There were only 0.5 crimes of Indecency per 1,000 residents in South Lanarkshire and only 2.4 Violent crimes per 1,000 people in 2007-08.

Specific Crimes & Offences in 2007-08

Table 3 shows the number of recorded incidents, their share of the All Crime or Offences figure and the incidence rate per 1,000 residents for ten specific crimes & offences in 2007-08. Between them, these ten individual crimes & offences accounted for 56.6% of all Crimes & Offences recorded in South Lanarkshire.

The largest number was for Acts of Vandalism, with 6,682 recorded offences. Next came Breaches of the Peace, 4,867, followed by Petty Assaults at 3,478 and then Public drinking offences at 2,660. The smallest numbers of crimes recorded were of Littering, with 74 recorded offences and crimes of Aggravated Racial Conduct at 169.

In terms of crime rates per 1,000 resident population, there were 21.7 Acts of Vandalism per 1,000 residents, followed by 15.8 per 1,000 Breaches of the Peace and 11.3 per 1,000 of Petty Assault. There were 8.6 per 1,000 for Public drinking and 6.1 per 1,000 for Drug Possession.

The lowest rates were for Littering at 0.2 per 1,000, followed by crimes involving Aggravated Racial Conduct at 0.5 per 1,000.

Table 3: Specific Crimes & Offences in South Lanarkshire in 2007-08

Specific crime	Numbers	% of all crimes & offences	Rate Per 1,000 residents
Domestic Housebreaking	937	2.4%	3.0
Vandalism	6,682	17.5%	21.0
Drug supplying	414	1.1%	7.0
Drug possession	1,892	5.0%	1.3
Breach of the Peace	4,867	12.7%	15.8
Public urination	429	1.1%	1.4
Aggravated Racial Conduct	169	0.4%	0.5
Littering	74	0.2%	0.2
Petty assault	3,478	9.1%	11.3
Public drinking	2,660	7.0%	8.6

Trends in Recorded Crimes & Offences

This section considers the trends in crimes & offences in South Lanarkshire. It should be noted that in October 2003 the police in South Lanarkshire introduced the new Scottish Crime Recording Standard to record crimes & offences. This make comparisons with recorded crime data prior to 2004-05 difficult as the new system leads to a greater recording of certain crimes & offences, in particular acts of vandalism, graffiti, etc, and certain crimes of violence and assault.

It should also be remembered that over the years a number of specific campaigns have been undertaken – both force wide and division wide – targeting particular crimes in certain periods and these will also impact on the figures.

Table 4 shows the total number of Crimes and Offences recorded by the police in South Lanarkshire for every year since 1999-2000.

Table 4: South Lanarkshire recorded crimes & offences

	Crimes	Offences	All crimes & offences
1999-2000	20,940	16,761	37,701
2000-2001	19,231	17,997	37,228
2001-2002	18,782	18,944	38,726
2002-2003	19,654	15,969	35,623
2003-2004	19,645	17,291	36,936
2004-2005	20,981	20,429	41,410
2005-2006	20,084	21,257	41,341
2006-2007	20,843	19,968	40,811
2007-2008	19,885	18,282	38,167

As this table shows, there were 19,885 recorded Crimes in South Lanarkshire in 2007-08 – the lowest recorded under the new system and a decline of 958, or 4.6%, from the 2006-07 level.

The number of Offences in 2007-08 was 18,282 – again the lowest since the new recording system was introduced in 2004-05 and a fall of 1,686 or 8.4% on the 2006-07 level.

The Detection rate for Crimes in 2007-08 was 43.1%. This was up 2 percentage points from the figure for 2006-07 and is the third highest crime detection rate for South Lanarkshire since 1999-2000.

In relation to the Detection rate for Offences, it was 89% in 2007-08. This is the lowest detection rate for offences recorded in South Lanarkshire since 2004-05 when the new recording system was fully introduced and since 1999-2000.

Figure 1 shows the number of recorded crimes & offences in South Lanarkshire since 1999-2000. As this figure shows, the number of offences has now fallen for two consecutive years after “peaking” in 2005-06.

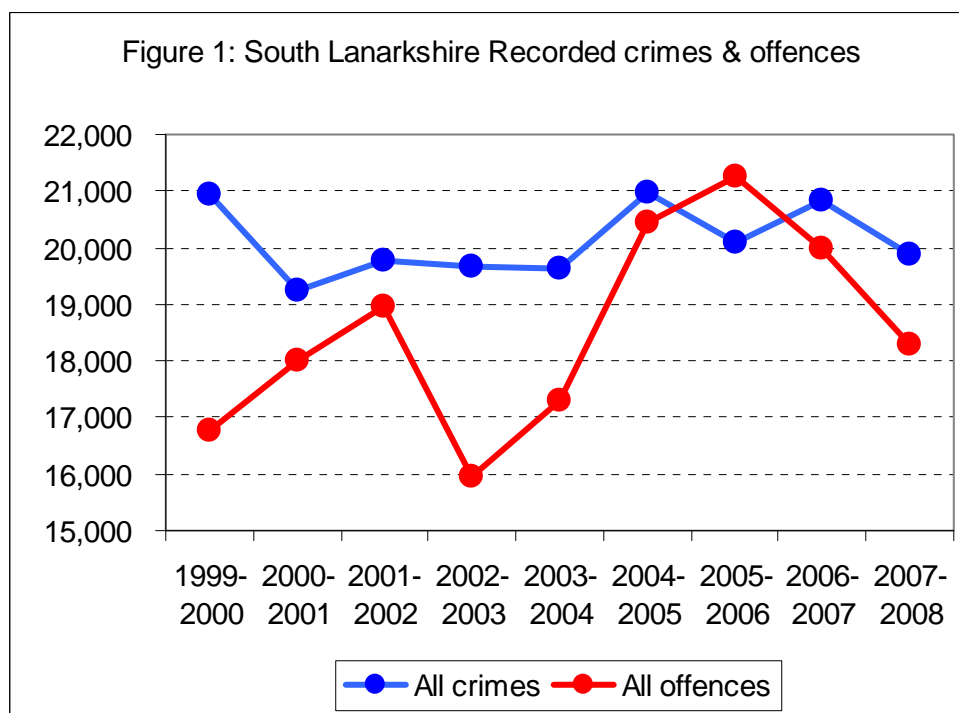


Figure 2 shows the detection rates for Crimes & Offences in South Lanarkshire since 1999-2000. As this figure shows, the Detection rate for Offences has now fallen for the third year in a row to its lowest level ever. The Detection rate for Crimes has risen and while the figure does tend to oscillate this would appear to suggest that the general downward trend has come to an end.

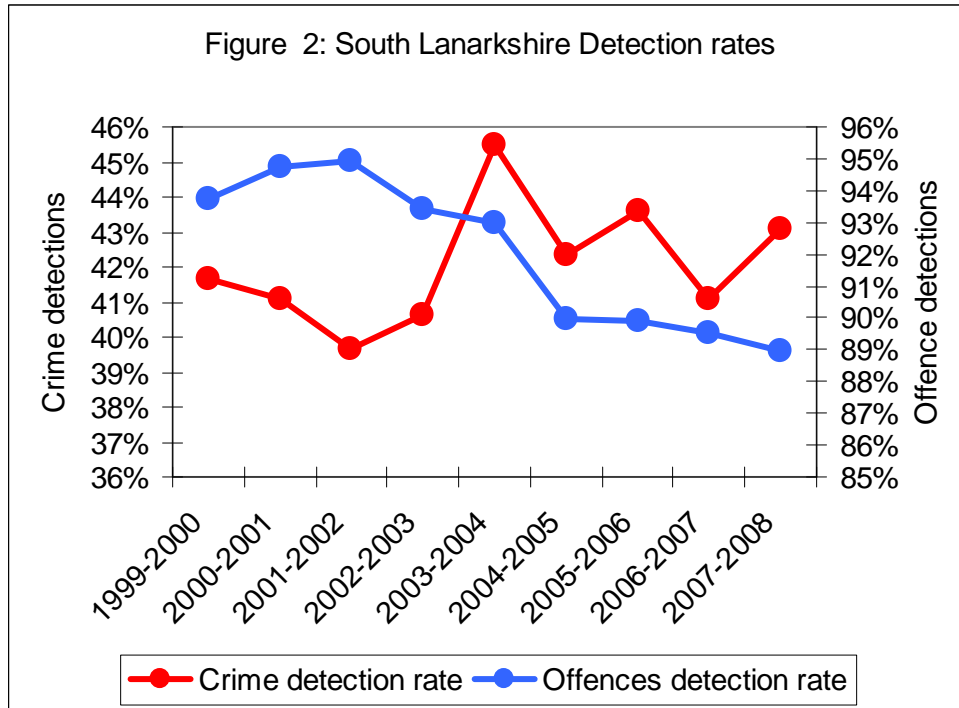


Figure 3 shows the percentage change in individual crimes & offences in South Lanarkshire between 2004-05 and 2007-08.

As this figure shows, comparing 2004-05 with 2007-08 the total number of all Crimes & Offences recorded in South Lanarkshire was down 3,243, or 7.8%. The numbers of Crimes were down by 1,096 or 5.2% and the number of Offences by 2,147, or 10.2%.

Over this period, crimes of Non-sexual Violence were down 712 or 49%. Crimes of Indecency were down 55 or 24% and crimes of Dishonesty by 846 or 10%. Vandalism & Fire Raising crimes were down 286 or 4%. The only major crime group to show an increase was Drugs & Other crimes, up 803 or 21%.

In terms of Offences, Miscellaneous offences were down 1,643 or 11% over the period and Motoring offences were down 504 or 8%.

Although it is not possible to compare the 2007-08 figures with those for years prior to 2004-05 due to the difference in crime recording systems – the numbers of Violent crimes in 2007-08 was the lowest since 1999-2000 – as were crimes of Dishonesty. Crimes of Indecency were at their lowest level since 2000-01. Drug & Other Crime levels were at the highest level recorded. Acts of Vandalism & Fire raising were at their second lowest level since 2004-05 – although comparisons with earlier years for this crime group is significantly affected by the system change. The number of Miscellaneous offences figure was the lowest since the new system began and these figures have now fallen each year since 2005-06. The number of Motoring offences was also the lowest since the new system began and these have also been falling each year since 2005-06.

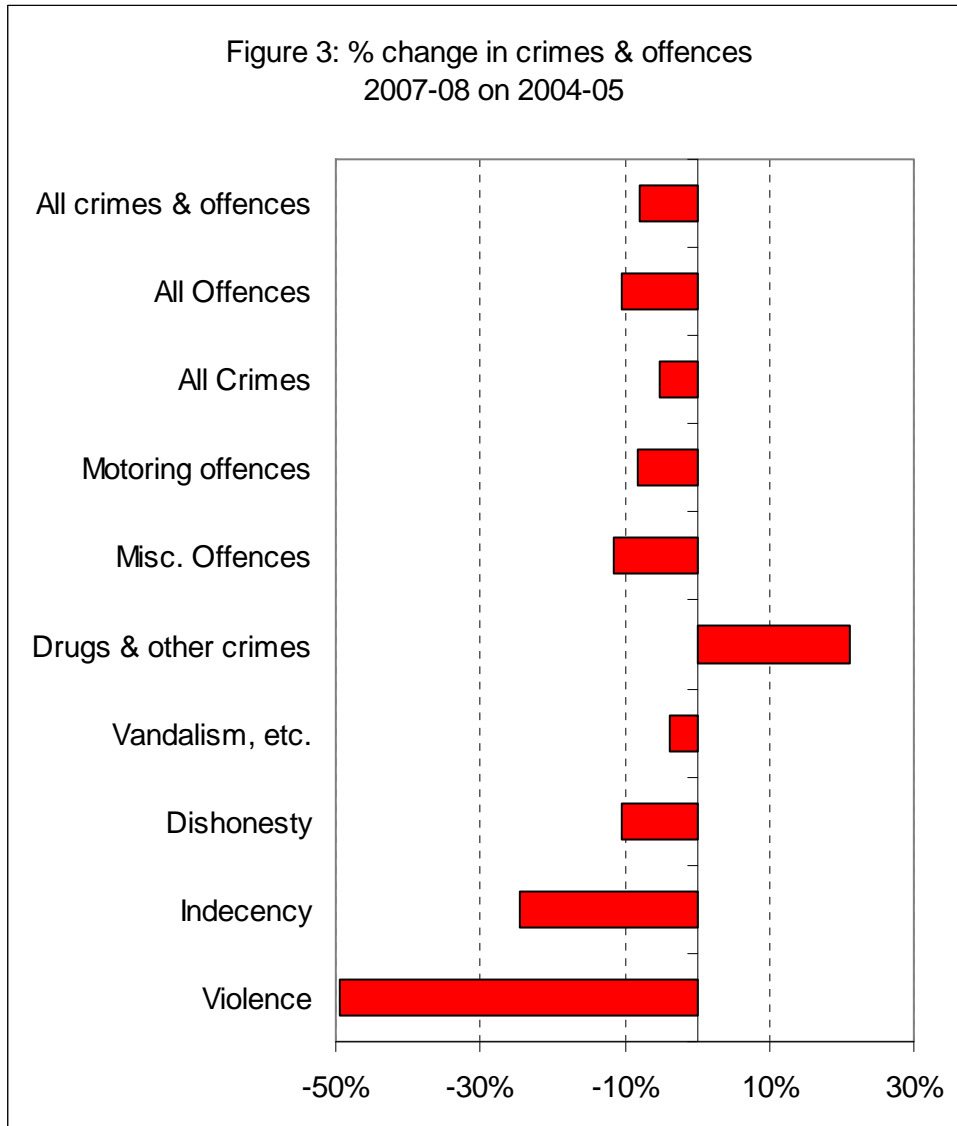


Figure 4 shows the percentage change in individual crimes & offences in South Lanarkshire between 2006-07 and 2007-08.

As this figure shows, over the year the overall the number of all Crimes & Offences recorded in South Lanarkshire was down 2,644, or 6.5%. The number of Crimes was down by 958 or 4.6% and the number of Offences by 1,686 or 8.4%.

Over the year crimes of Non-sexual Violence were down 576 or 44%. Crimes of Indecency were down 25 or 13% and crimes of Dishonesty by 913 or 11%. Vandalism & Fire Raising crimes were down 105 or 1.5%. The only major crime group to show an increase was Drugs & Other crimes, up 661, or 17%.

In terms of Offences, Miscellaneous offences were down 1,602 or 11% over the period and Motoring offences were down 84 or 1.4%.

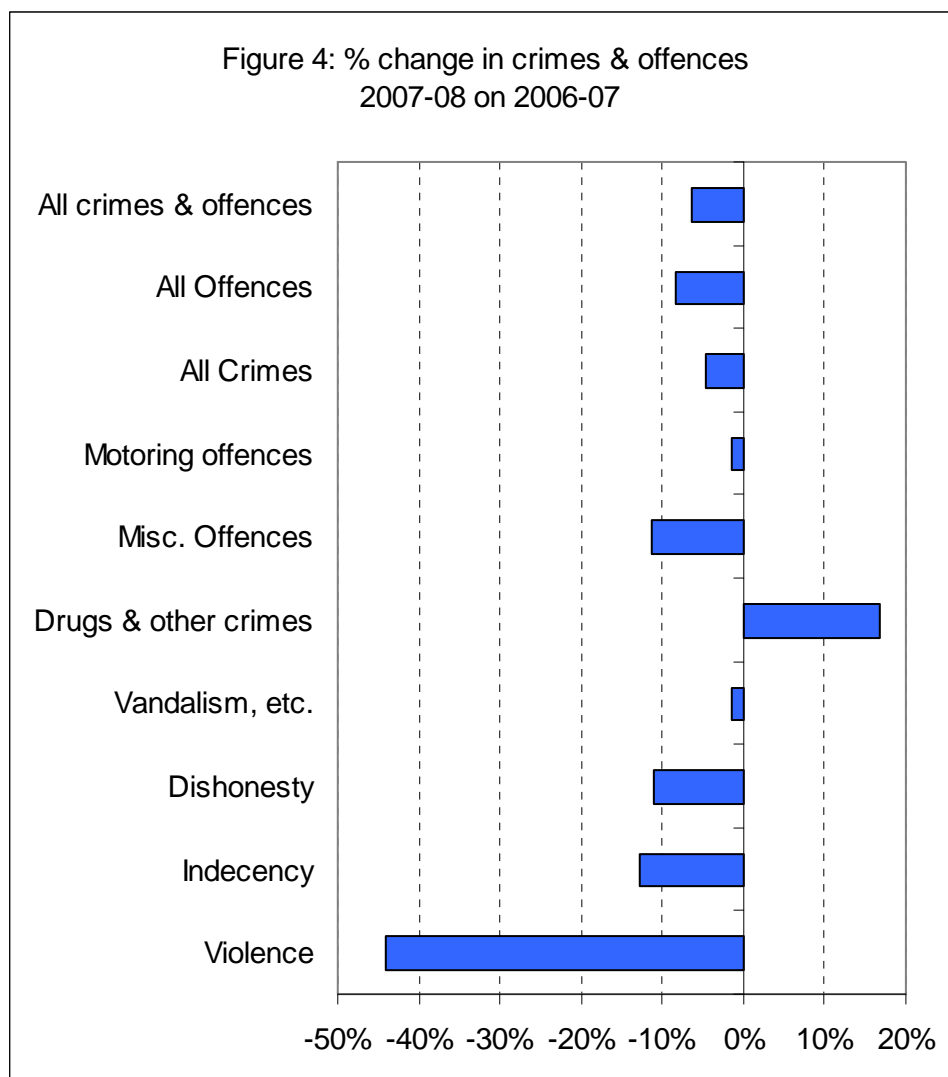


Table 5 shows the absolute and percentage change in a number of specific crimes & offences in South Lanarkshire between 2004-05 and 2007-08. It also shows the numbers in relation to the numbers in the previous year.

Table 5: Change in selected crimes & offences 2007-08 on 2004-05

Crime / Offence	Change on 2004-05		Change on 2006-07	
	Numbers	%	Numbers	%
Domestic housebreaking	-729	-43.8%	-168	-15.2%
Vandalism	-320	-4.6%	-169	-2.5%
Drugs supplying	157	61.1%	114	38.0%
Drug possession	-396	-17.3%	- 41	-2.1%
Breach of the Peace	-221	-4.3%	146	3.1%
Urinating	-54	-11.2%	-63	-12.8%
Racially Aggravated Conduct	46	37.4%	-2	-1.2%
Littering	-17	-18.7%	2	2.8%
Petty assault	-285	-7.6%	-206	-5.6%
Public drinking	-988	-27.1%	-1,290	-32.7%

As this table shows, between 2004-05 and 2007-08, there was a 61% increase in the number of Drug Supplying crimes recorded and a 37% rise in Racially Aggravated Conduct. All the other Crimes and Offences show falls – ranging from a 44% fall in Domestic housebreaking and a 27% fall in Public drinking offences to a 4.3% fall in Breaches of the Peace and a 4.6% fall in Acts of Vandalism.

Between 2006-07 and 2007-08, for these selected crimes, there was a 38% rise in the number of recorded incidences of Drug supplying, a 3% rise in Breaches of the Peace and a 2.8% rise in Littering offences. All the remainder experienced declines, ranging from a 33% fall in the number of Public drinking offences to a 1.2% decline in the number of incidents of Racially Aggravated Conduct.

Overall Crimes & Offences by Area 2007-08

Table 6 shows the recorded crimes & offences at the level of 14 'community areas' across South Lanarkshire and Table 7 shows the percentage of South Lanarkshire crimes and offences recorded in each area and the proportion of an area's crimes & offences which were crimes.

In 2007-08, Hamilton had the largest number of recorded **Crimes** at 4,922 followed by East Kilbride with 3,709, Rutherglen with 2,824, Cambuslang with 1,309 and then Lanark with 1,251. The smallest numbers of recorded crimes were in Stonehouse, 291, Uddingston with 294 and then Strathaven at 331.

Hamilton accounted for 24.8% of all crimes, followed by East Kilbride with 18.7%, Rutherglen with 14.2% and then Cambuslang with 6.6% and Lanark with 6.3% of all crimes in South Lanarkshire.

In terms of **Offences**, Hamilton again had the greatest number with 4,349 offences. Next came East Kilbride with 3,221, Rutherglen at 2,476, Lanark at 1,345 and Cambuslang with 1,195. The lowest numbers of offences were in Stonehouse with 251, Uddingston at 290 and Bothwell at 304.

Hamilton accounted for 23.8% of all offences in South Lanarkshire, with East Kilbride accounting for 17.6%, Rutherglen for 13.5%, Lanark for 7.4% and Cambuslang for 6.5%.

In South Lanarkshire in 2007-08, 52.1% of all recorded crimes & offences were Crimes. In 7 community areas, Crimes accounted for a greater share than the South Lanarkshire average of all crimes and offences. In Larkhall, 55.3% were Crimes, in Stonehouse the figure was 53.7%, in East Kilbride 53.3% and in Hamilton, 53.1%.

In Clydesdale East in 2007-08 only 46.9% of its total of crimes & offences were Crimes, as were only 47.9% in Carluke and 48.2% in Lanark and Strathaven

Table 6: Crimes & offences in 2007-08 within South Lanarkshire

Community	Number of Crimes	Number of Offences	All Crimes & Offences
East Kilbride	3,709	3,221	6,930
Strathaven	331	356	687
Uddingston	294	290	584
Bothwell	343	304	647
Blantyre	1,228	1,190	2,418
Hamilton	4,922	4,349	9,271
Larkhall	1,209	976	2,185
Stonehouse	291	251	542
Carluke	986	1,074	2,060
Clydesdale East	711	805	1,516
Lanark	1,251	1,345	2,596
Lesmahagow	477	450	927
Rutherglen	2,824	2,476	5,300
Cambuslang	1,309	1,195	2,504
South Lanarkshire	19,885	18,282	38,167

Table 7: Share of South Lanarkshire recorded crimes & offences 2007-08

Community	Number of Crimes	Number of Offences	% Total being Crimes
East Kilbride	18.7%	17.6%	53.5%
Strathaven	1.7%	1.9%	48.2%
Uddingston	1.5%	1.6%	50.3%
Bothwell	1.7%	1.7%	53.0%
Blantyre	6.2%	6.5%	50.8%
Hamilton	24.8%	23.8%	53.1%
Larkhall	6.1%	5.3%	55.3%
Stonehouse	1.5%	1.4%	53.7%
Carluke	5.0%	5.9%	47.9%
Clydesdale East	3.6%	4.4%	46.9%
Lanark	6.3%	7.4%	48.2%
Lesmahagow	2.4%	2.5%	51.5%
Rutherglen	14.2%	13.5%	53.3%
Cambuslang	6.6%	6.5%	52.3%
South Lanarkshire	100%	100%	52.1%

Table 8 shows the number of recorded crime and offences on a per 1,000 residents basis in 2007-08.

Table 8: Crimes & Offences in 2007-08 on a per 1,000 basis

2007-08	Crimes Per 1,000	Offences Per 1,000	Relative Crime Rate	Relative Offences Rate
East Kilbride	49.07	42.61	75.9%	71.7%
Strathaven	29.76	32.01	46.0%	53.9%
Uddingston	52.03	51.32	80.5%	86.4%
Bothwell	52.71	46.72	81.6%	78.6%
Blantyre	68.42	66.30	105.9%	111.6%
Hamilton	98.53	87.06	152.5%	146.5%
Larkhall	75.92	61.29	117.5%	103.1%
Stonehouse	34.50	29.75	53.4%	50.1%
Carluke	50.41	54.91	78.0%	92.4%
Clydesdale East	50.11	56.73	77.5%	95.5%
Lanark	70.97	76.31	109.8%	128.4%
Lesmahagow	56.35	53.16	87.2%	89.5%
Rutherglen	84.16	73.79	130.2%	124.2%
Cambuslang	56.55	51.63	87.5%	86.9%
South Lanarkshire	64.63	59.42	100%	100%

In terms of **Crime rates per 1,000**, Hamilton had the highest figure of 98.5 recorded crimes per 1,000, followed by Rutherglen at 84.2 per 1,000, Larkhall at 75.9 per 1,000, Lanark at 71 per 1,000 and Blantyre at 68.2 per 1,000. All the other communities had crime rates below the South Lanarkshire average. The lowest rates were in Strathaven at 29.8 per 1,000 and Stonehouse at 34.5 per 1,000.

The recorded crime rate in Hamilton was over 50% higher than the South Lanarkshire average, with the rate in Rutherglen being nearly a third higher and in Larkhall nearly a fifth higher. The rate in Strathaven was less than half the average and in Stonehouse just over half the South Lanarkshire average.

In 2007-08, Hamilton had the highest rate of **Offences per 1,000 residents** – at 87.1 per 1,000. The next highest rates were in Lanark at 76.3 per 1,000 and Rutherglen at 73.8 per 1,000. All were above the South Lanarkshire average of 59.4 per 1,000 as were the rates in Blantyre at 66.3 per 1,000 and Larkhall at 61.3 per 1,000.

Hamilton's Offences rate per 1,000 was almost 50% higher than the South Lanarkshire average, with the rate in both Lanark and Rutherglen being over a quarter higher and in Blantyre over a tenth higher. The rate in Larkhall was just 3% higher than the average.

The lowest Offences rate per 1,000 was in Stonehouse at 29.7 per 1,000 followed by Strathaven at 32 per 1,000. The Stonehouse rate was half the South Lanarkshire average and the Strathaven rate was just over half the overall average.

Although, overall, Hamilton accounted for 24.8% of all crimes in 2007-08, it accounted for 32% of Drugs & Other Crimes and 25.5% of crimes of Violence. East Kilbride accounted for 18.7% of all crimes, but 21% of Acts of Vandalism and 20% of Violent crime and only 12% of Drugs & other crimes. Rutherglen accounted for 14.2% of all crimes but 18% of all crimes of Violence. Lanark accounted for only 6.3% of all crimes but 16% of all crimes of Indecency.

The crime detection rate in Hamilton in 2007-08 was over a quarter higher than the South Lanarkshire average and in Lanark it was just under 2% higher – all other areas had lower crime detection rates than in South Lanarkshire as a whole. The detection rate in Rutherglen was just below the average but East Kilbride's detection rate was over a tenth lower.

The lowest crime detection rates were in Bothwell, at under two-thirds of the average, and in Strathaven at just over two-thirds of the South Lanarkshire average.

Incidences of Crimes & Offences by Area 2007-08

This section looks at the numbers of recorded crimes per 1,000 residents in each community area in 2007-08.

In relation to the incidence of the main crime groups, in terms of **Violent (non-sexual) crime** in 2007-08, the highest incidences were in Rutherglen, Blantyre and Hamilton. In the case of Rutherglen, the incidence of violent crime was over two-thirds higher than the council average and in Blantyre it was just under two-thirds higher while in Hamilton it was over 50% higher. However, in Stonehouse the Violent crime rate was under a quarter of the South Lanarkshire average and in Clydesdale East and Uddingston it was less than half the average.

In relation to **crimes of Indecency**, the highest incidence rates were in Lanark – nearly three times the South Lanarkshire average in 2007-08 – with the incidence rate in Hamilton being nearly a third higher and in Uddingston being over a quarter higher than the average. In Strathaven the rate was under a fifth of the average and in Stonehouse it was just over a fifth of the average.

In 2007-08, the incidence of crimes of **Dishonesty** was over 50% higher in Hamilton, over a third higher in Larkhall and over a tenth higher in both Bothwell and Uddingston. The incidence rate in Stonehouse was under two-thirds of the South Lanarkshire average and in Strathaven just over two-thirds of the average.

The incidence of **Vandalism** was nearly a third higher in Rutherglen and over a quarter higher in Hamilton, as well as being over a fifth higher in Blantyre and Larkhall. In the case of Strathaven the incidence of vandalism was under half of the average and in Stonehouse it was under two-thirds of the average.

The highest incidence of **Drugs & Other crimes** was in Hamilton – at nearly twice the South Lanarkshire average, with the rate in Rutherglen being just under two-thirds higher and in Lanark and Blantyre over a tenth higher. The lowest incidence of this type of crime occurred in Strathaven – just over a fifth of the South Lanarkshire average in 2007-08 and in Stonehouse at just over a third. .

The **Miscellaneous offences** rate was 50% higher than the average in Hamilton in 2007-08, over a quarter higher in Rutherglen and over a tenth higher in both Blantyre and Larkhall. In Strathaven and in Stonehouse it was under half the South Lanarkshire average and nearly a fifth higher in Blantyre and Lanark. In Stonehouse it was less than half of the South Lanarkshire average.

The incidence of **Motoring offences** was over 50% higher in Lanark, over two-fifths higher in Clydesdale East, and over a quarter higher in Bothwell and Hamilton. It was just over half the South Lanarkshire average in 2007-08 in both Stonehouse and East Kilbride.

Trends in Crimes & Offences by Community since 2004-05

Between 2004-05 and 2007-08 all crimes & offences fell by 3,243 or 7.8%. The number of Crimes fell by 1,096 or -5.2% whilst the number of Offences fell by -2,147 or 10.5%.

Table 9 shows the percentage change in All Crimes, Offences and both Crimes & Offences at a community area level between 2004-05 and 2007-08.

Table 9: % change in Crimes & Offences 2007-08 on 2004-05

	Crimes	Offences	Crimes & Offences
East Kilbride	-10.5%	-25.2%	-17.9%
Strathaven	-20.4%	-47.7%	-37.4%
Hamilton	4.7%	-8.9%	-2.2%
Blantyre	-23.8%	-15.9%	-20.1%
Bothwell	-15.1%	-9.5%	-12.6%
Larkhall	-2.8%	-1.6%	-2.3%
Stonehouse	26.5%	16.7%	21.8%
Uddingston	-13.3%	-2.7%	-8.3%
Carluke	1.5%	6.3%	4.0%
Clydesdale East	-9.8%	-10.9%	-10.3%
Lanark	-2.0%	-10.6%	-6.6%
Lesmahagow	21.1%	-15.3%	0.2%
Rutherglen	2.9%	11.2%	6.6%
Cambuslang	-24.0%	-3.5%	-15.4%
South Lanarkshire	-5.2%	-10.5%	-7.8%

As this table shows, there were five communities out of fourteen where the number of **Recorded Crimes** in 2007-08 was above that in 2004-05. In the case of Stonehouse the increase was 26.5% and Lesmahagow experienced a 21% rise. Hamilton saw a 4.7% rise. Cambuslang and Blantyre both experienced a 24% fall in recorded crimes between these two dates, with a 20% fall in Strathaven. In South Lanarkshire as a whole, recorded crime fell by 5%.

In relation to **Recorded Offences**, the number has risen in three communities over the 2004-05 to 2007-08 period – with a 16.7% rise in Stonehouse, an 11% rise in Rutherglen and a 6% rise in Carluke. The largest percentage falls in the remaining 11 community areas were in Strathaven, down 47% and in East Kilbride, down 25%. Blantyre saw a decline of 16%. The overall South Lanarkshire decline was 10%.

In relation to **All crimes & offences**, they fell by 7.8% overall in South Lanarkshire and rose in only four communities. Stonehouse saw a 22% rise, followed by Rutherglen with a 7% rise, Carluke with 4% and Lesmahagow with a 0.2% rise. The largest percentage falls were in Strathaven, down 37%, Blantyre, down 20%, and in East Kilbride, down 18%.

Indexing the recorded crime & offences figures on their 2004-05 levels, Carluke, Rutherglen and Lesmahagow are the only communities where the total number of crimes & offences has been above this level each year since then. Strathaven is the only community to see the number of crimes & offences fall each year from its 2004-05 level.

Rutherglen is the only area where the number of recorded offences has remained above its 2004-05 level each year since then with Strathaven being the only area where the number has fallen consistently each year from its 2004-05 level.

In terms of **Detection rates** overall, the **detection rate for All crimes & offences** has been above the 2004-05 levels every year since then in both Hamilton and Uddingston. Stonehouse and Lesmahagow have both seen their detection rate fall each year since 2004-05.

In terms of the **Detection rate for crimes**, Hamilton and Uddingston have seen their detection rates always being above their 2004-05 levels. Stonehouse has seen its crime detection rate fall each year since 2004-05.

For the **Detection rate for offences**, Carluke and Cambuslang are the only areas where the detection rate has consistently been above its 2004-05 level – and in the case of Carluke the detection rate has increased each year. Bothwell and Lesmahagow are the only areas where the detection rate has consistently fallen each year since 2004-05.

Main Crimes & Offences by Police Beat 2007-08

Table 10 shows the twenty police beats in South Lanarkshire which accounted for the greatest share of crimes and offences recorded by the police in 2007-08. It should be noted that certain crimes & offences can be concentrated in particular locations – in or near licensed premises or shops or public transport sites (taxi ranks, bus stops, etc.). Motoring offences can also be concentrated at particular locations, such as trunk roads or the M74 or particular speeding blackspots. This is the main reason why town centres and some rural and urban locations tend to show concentrations of crimes and offences.

Table 10: Recorded crimes & offences in 2007-08 – Police beats

POLICE BEAT	% CRIMES	POLICE BEAT	% OFFENCES
Hamilton Town Centre	6.2%	Hamilton Town Centre	7.8%
Greenhills	4.0%	Lanark Town Centre	5.3%
Carluke Town Centre	4.0%	Carluke Town Centre	5.1%
Lanark Town Centre	3.9%	East Kilbride Town Centre	3.9%
Whitehill-Burnbank	3.6%	Whitehill-Burnbank	3.4%
Fairhill	3.1%	Gallowflat - Clincarthill	3.2%
Gallowflat - Clincarthill	3.1%	Blantyre - West End	3.1%
Blantyre - West End	2.9%	Greenhills	2.8%
East Kilbride Town Centre	2.7%	Almada Street	2.6%
Hillhouse	2.7%	Hillhouse	2.4%
Larkhall - Strutherhill	2.6%	Westwood	2.4%
Calderwood	2.6%	Calderwood	2.3%
Almada Street	2.5%	Larkhall - Hareleeshill	2.2%
Westwood	2.4%	Cambuslang - Silverbank	2.1%
Westburn - Hallside	2.4%	High Blantyre	2.1%
Larkhall - Hareleeshill	2.3%	Larkhall - Strutherhill	2.0%
West Mains	2.1%	Westburn - Hallside	1.9%
Shawfield – Burnhill	2.1%	Shawfield - Burnhill	1.9%
High Burnside - Cathkin	1.8%	Strathaven	1.7%
Cambuslang - Silverbank	1.7%	High Burnside - Cathkin	1.7%

In terms of **Crimes**, the beat covering Hamilton Town Centre was where 6.2% of all crimes were recorded in 2007-08, followed by the Greenhills area of East Kilbride and Carluke Town Centre, each with a 4% share, followed by Lanark Town Centre at 3.9% and then Whitehill-Burnbank with a 3.6% share.

The Symington, Crossford and Thorntonhall beats had the smallest number of crimes recorded in 2007-08.

In relation to **Offences**, 7.8% of all offences recorded by the police in 2007-08 took place in Hamilton Town Centre, followed by 5.3% in Lanark Town Centre, 5.1% in Carluke Town Centre and 3.9% in East Kilbride Town Centre. Next came the Whitehill-Burnbank beat with a 3.4% share and Rutherglen's

Gallowflat-Clincarthill area with a 3.2% share. The Symington, Thorntonhall and Crossford beats had the lowest number of offences recorded in South Lanarkshire at a beat level in 2007-08.

Table 11 shows the rate of All crimes per 1,000 residents in 2007-08 by police beat.

In 2007-08, the overall South Lanarkshire **incidence of crimes** was 64.6 per 1,000. At a police beat level, the highest rates were for East Kilbride Town Centre, at 753 per 1,000 residents and Hamilton Town Centre at 394 per 1,000. It should be noted that while town centres are areas with large numbers of premises which are main locations for criminal activity, they also have low *resident population* numbers, resulting in high incidence rates. After these two Town Centres, the highest incidence rates per 1,000 residents were in Shawfield-Burnhill at 213 per 1,000, followed by Whitehill-Burnbank at 180 per 1,000 and Rigside at 179 per 1,000.

The lowest All crimes per 1,000 residents rates were in the Landward area of Biggar at 10.3 per 1,000, followed by the Landward area of Carluke at 13.7 crimes per 1,000 and Symington at 14.8 per 1,000.

Table 11: Incidence per 1,000 of All crimes 2007-08

POLICE BEAT	All Crimes per 1,000 residents
East Kilbride Town Centre	753.1
Hamilton Town Centre	394.3
Shawfield-Burnhill	213.0
Whitehill-Burnbank	180.5
Rigside	178.6
Almada Street	170.4
Gallowflat-Clincarthill	141.6
Larkhall-Strutherhill	116.1
Springwells	112.7
Lanark Town Centre	108.8
Whitlawburn	104.2
The Village	95.4
Udston	94.4
Carstairs	92.8
Fairhill	90.6
Cambuslang-Silverbank	89.4
Abington	81.6
Farne Cross	78.9
Cathkin-Springhall	77.9
Carluke Town Centre	75.9
Greenlees	68.1

Table 12 shows the rate of All Offences per 1,000 residents in 2007-08 by police beat.

Table 12: Incidence per 1,000 of All Offences 2007-08

POLICE BEAT	All Offences – per 1,000 residents
East Kilbride Town Centre	1000.0
Hamilton Town Centre	460.3
The Village	165.9
Almada Street	165.6
Whitehill-Burnbank	156.6
Lanark Town Centre	136.4
Rutherglen-Gallowflat-Clincarthill	134.5
Shawfield-Burnhill	118.0
Rigside	106.8
Carstairs	105.5
Cambuslang-Silverbank	99.2
Abington	91.1
Carluke Town Centre	88.5
Springwells	86.3
Whitlawburn	85.9
Larkhall-Strutherhill	82.6
High Blantyre	78.5
Forth	66.2
High Burnside-Cathkin-Springhall	65.8
Udston	64.6

In 2007-08, the overall South Lanarkshire **incidence of offences** was 59.4 per 1,000. At a police beat level, the highest figures were for East Kilbride Town Centre, at 1,000 per 1,000 residents and Hamilton Town Centre at 460 per 1,000. Again it should be noted that while these are areas with large numbers of premises which are main locations for criminal activity, they also have low resident population levels, thus giving them high incidence rates. After these two Town Centres, the highest incidence rates per 1,000 residents were in the East Kilbride Village area at 166 per 1,000, Almada Street at 165 per 1,000 and the Whitehill-Burnbank beat at 157 per 1,000.

The lowest rates of All Offences per 1,000 residents were in the Glassford-Chapelton beat at 9.1 per 1,000, followed by a rate of 10.7 per 1,000 in the Landward area of Carluke, 12 per 1,000 in Symington and 18 per 1,000 in the Quarter beat.

Changes in Crimes & Offences by Beat 2004-05 to 2007-08

Table 13 shows the ten beats in South Lanarkshire which experienced the largest percentage increases and declines in both Crimes and Offences over the 2004-05 to 2007-08 period.

Overall, 32 beats experienced an increase in the number of recorded crimes between 2004-05 and 2007-08. There was one beat – Crossford – which experienced no change and in 34 beats the number of crimes fell.

The largest percentage rises over this period in relation to recorded Crimes were in Quarter, up 169%, and the Thorntonhall beat, up 160%. There was a 94% rise in Rigside, a 68% rise in Crawford & Leadhills and a 45% rise in the Lanark Landward area.

In terms of the largest percentage falls, these were in the Law beat, down 41%, the Biggar Landward area (-40%), Biggar Town Centre (-35%), East Kilbride Village area (-34%) and Springwells (-33%).

Table 13: Largest percentage rises and declines in Crimes & Offences 2004-05

Beat – Crime	% change Crimes	Beat - Offences	% change Offences
Quarter	169.2%	Eastfield	128.6%
Thorntonhall	160.0%	Cambuslang-Silverbank	59.3%
Rigside	93.7%	Symington	57.1%
Crawford & Leadhills	67.6%	Almada Street	45.6%
Lanark Landward	45.2%	Farme Cross	37.0%
Larkhall-Strutherhill	41.0%	Quarter	36.8%
Almada Street	32.6%	Kirkfieldbank	36.4%
Farme Cross	31.3%	Larkhall-Strutherhill	24.4%
Stonehouse	26.5%	Westburn-Hallside	23.2%
Udston	24.5%	Ferniegair	20.0%
Strathaven	-24.9%	Abington	-29.4%
Murray	-25.4%	Law	-35.9%
East Kilbride Town Centre	-27.2%	Murray	-36.4%
Westwood	-30.1%	Kirkmuirhill-Blackwood	-43.4%
Lighthstonehall	-30.3%	Thorntonhall	-45.5%
Springwells	-33.5%	Westwood	-46.2%
The Village	-33.9%	Strathaven	-46.4%
Biggar Town Centre	-35.4%	Fairhill	-47.0%
Biggar Landward	-40.0%	Crossford	-51.7%
Law	-40.9%	Glassford-Chapelton	-54.7%

Overall, in terms of Offences, of the 67 police beats in South Lanarkshire, a total of 23 experienced rises and 44 experienced falls. The largest percentage increases in Offences between 2004-05 and 2007-08 was in Eastfield, at 129%. There was a 59% rise in Offences over this period in Cambuslang-Silverbank, with a 57% rise in Symington, a rise of 46% in Almada Street and a 37% rise in the Farme Cross area.

The largest percentage fall was in Glassford-Chapelton at -55%. The next largest percentage falls were in Crossford (down 52%), Fairhill (-47%), Strathaven (-46%) and Westwood at -46%.

Specific Anti-Social Behaviour Crimes & Offences in 2007-08

Table 14 shows figures for selected specific recorded anti-social behaviour crimes & offences. In 2007-08, 18,624 crimes & offences fell into this grouping. Of them, 36% (6,682) were acts of Vandalism, 26% were Breaches of the Peace (4,867), followed by 19% being Petty Assaults (3,478) and 14% being Public Drinking (2,660).

Overall, the rate of these forms of Anti-Social Behaviour in 2007-08 in South Lanarkshire was 60 per 1,000 resident population. This varied from a figure of 21.7 per 1,000 for acts of Vandalism and 15.8 per 1,000 for Breaches of the Peace, to 11.3 per 1,000 for Petty Assault, 8.6 per 1,000 for Public drinking offences, and 3 per 1,000 for Domestic housebreaking.

Table 14: Main Anti-Social Behaviour crimes & offences in 2007-08

ASB CRIMES, ETC	Numbers	% Share	PER 1,000
Domestic housebreaking	937	5.0%	3.0
Vandalism	6,682	35.9%	21.7
Breach of the Peace	4,867	26.1%	15.8
Petty Assault	3,478	18.7%	11.3
Public drinking	2,660	14.3%	8.6
Total	18,624	100%	60.5

Table 15 shows the beats which contained the greatest numbers of these Anti-Social Behaviour crimes & offences in 2007-08. The Hamilton Town Centre beat had the largest number at 987 (5% of the total). Carluke Town Centre came next with 870 (4.7%) followed by Greenhills with 847 (4.5%) and Lanark Town Centre with 817 (4.3%).

The smallest number of Anti-Social Behaviour crimes & offences were recorded in Abington (18), Crossford (11) and Thorntonhall (7).

In relation to the incidence of the main forms of police recorded Anti-Social Behaviour in 2007-08, the highest rates were again in East Kilbride and Hamilton Town Centres, at 788 per 1,000 and 318 per 1,000 respectively. The next rates were in Whitehill-Burnbank at 164.9 per 1,000, followed by Almada Street at 138.1 per 1,000 and The Village in East Kilbride at 134 per 1,000.

The lowest rates of recorded Anti-Social Behaviour crimes & offences were in the Landward area of Biggar at 7.9 per 1,000, followed by the Landward area of Carluke at 10.6 per 1,000 and then Glassford-Chapelton at 10.8 per 1,000.

Table15: Main Anti-Social Behaviour offences and incidences in 2007-08 by beat

BEAT	NUMBERS	BEAT	PER 1000
Hamilton Town Centre	987	East Kilbride Town Centre	788.0
Carluke Town Centre	870	Hamilton Town Centre	318.2
Greenhills	847	Whitehill-Burnbank	164.9
Lanark Town Centre	817	Almada Street	138.1
Whitehill-Burnbank	655	The Village	134.1
Blantyre - West End	614	Rigside	126.2
East Kilbride Town Centre	565	Shawfield-Burnhill	121.4
Hillhouse	554	Gallowflat-Clincarthill	120.2
Calderwood	546	Lanark Town Centre	114.9
Gallowflat - Clincarthill	521	Carstairs	103.4
Larkhall - Strutherhill	449	Larkhall-Strutherhill	99.7
Westwood	440	Whitlawburn	97.5
Westburn-Hallside	436	Udston	97.1
Fairhill	414	Springwells	93.7
Almada Street	402	Carluke Town Centre	82.5
High Blantyre	392	High Blantyre	80.1
Larkhall - Hareleeshill	387	Cathkin-Springhall	79.2
Eddlewood	384	Laighstonehall	78.2
Fernhill	377	Cambuslang-Silverbank	78.0