

Policy Briefing 2008-09 Recorded crime in South Lanarkshire (July 2009)

The Central Research Unit has been given the remit of reviewing and scanning the environment that the council and its community planning partners operate within. As part of this process, the Unit has developed a series of Policy Briefings on issues relating to the interests of the council and its social, economic and policy environment.

They are not intended to be for information only, but to provide background information on a topic of relevance to the Council and its partners with a focus on analysing and, where relevant, identifying issues arising from this work.

Their aim is to: -

- Promote consideration of issues arising out of an analysis of key statistics and trends
- Reflect on the issues and direction of emerging Government and Executive policies
- Deepen the council and partners' understanding and knowledge of issues.

This particular Policy Briefing contains the results of an analysis of ***Recorded crime in South Lanarkshire in 2008-09***. This summarises the overall South Lanarkshire situation, youth crime and trends over time.

For further information on this subject contact: -

Alex Morton **Tel:** **01698 453829**
Email: alex.morton@southlanarkshire.gov.uk

Helen Rae **Tel :** **01698 453831**
Email: Helen.rae@southlanarkshire.gov.uk

Introduction

It is important to note that in October 2003 Strathclyde Police South Lanarkshire Division introduced the new Scottish Crime Recording Standard – the standard was implemented across all police forces on 1st April 2004. Until its introduction, before recording an incident as a crime the police required evidence that a crime had been committed - as opposed to reporting an accident or loss - they would not take the victim's account of the incident unsupported.

Under the new system any report of a crime will be recorded at face value. This is seen as principally impacting on low level crimes only – vandalism, theft from cars, disorder, etc. The new approach is now seen as more victim-centred. However this development means that trends over time are distorted by the new system – and to varying effect for individual crime types. As South Lanarkshire introduced the system earlier than elsewhere, comparisons with other areas will also be affected.

Another major impact on the recorded crime figures which makes historical comparisons difficult is the rise in the issuing of Fixed Penalty Notices, which means that these offences do not appear in the recorded crime figures. The use of these Notices will particularly impact on the recording of Miscellaneous and Motoring Offences. However, the figures contained in this report have been adjusted to take account of this factor. There is also the fact that a number of major local divisional and force-wide Strathclyde Police initiatives to tackle crime, especially violent crime, drugs and weapons carrying have occurred throughout 2008-09.

It is also important to recognise that the reporting of crimes can be affected by a number of factors – including the fact that different communities can have different 'tolerance' levels for crimes & offences and this can affect the level of incidents reported to the police and therefore some of the differences between areas may reflect this tolerance factor.

Summary

In 2008-09 the number of crimes recorded by Strathclyde Police in South Lanarkshire was the lowest under the new recording system which began in 2004-05 and also the lowest recorded since 1999-2000. The number of offences recorded was also the lowest since the new recording system began. The number of Violent non-sexual crimes recorded in South Lanarkshire in particular has fallen significantly to its lowest level since 1999-2000.

Miscellaneous Offences - Breaches of the Peace, Public drinking, Littering, Race crime, etc. – were the largest single group of crimes & offences – accounting for just under a third of all crimes & offences. Crimes of Dishonesty accounted for a further fifth of all crimes & offences. The smallest group was Crimes of Indecency - in 2008-09 these crimes were at their highest level since the new system came in during 2004-05 and Drug crimes were at their 2nd highest level.

Overall in 2008-09 there were 64.6 crimes per 1,000 residents in South Lanarkshire and 59.4 offences per 1,000 residents. There were only 0.7 crimes of Indecency per 1,000 residents in South Lanarkshire and 2.3 Violent crimes per 1,000 people in 2008-09.

The Detection rate for Crimes in 2008-09 was 42.9%. This was down 0.2 of a percentage point from the figure for 2007-08 but is the 4th highest crime detection rate for South Lanarkshire since 1999-2000. In relation to the Detection rate for

Offences, it was 85.3% in 2007-08. This is the lowest detection rate for offences recorded in South Lanarkshire since 2004-05 when the new recording system was fully introduced.

Comparing 2008-09 with 2004-05 shows that the total number of all Crimes & Offences recorded in South Lanarkshire was down 4,225, or 10.2%. The number of Crimes was down by 1,815 or 8.7% and the number of Offences by 2,410, or 11.8%. Over this period crimes of Non-sexual Violence were down 744 or 52%. Acts of Vandalism, etc., were down 1,136 or 15% and Crimes of Indecency were down 16 or 7% with crimes of Dishonesty down 564 or 6.9%. The only major crime group to show an increase was Drugs & Other crimes, up 645 or 17%. In terms of Offences, Miscellaneous offences were down 1,967 or 13.9% over the period and Motoring offences were down 443 or 7.1%.

Looking at a more detailed crime & offences level, between 2004-05 and 2008-09 there was a 44% rise in Racially Aggravated Conduct and a 6% rise in the number of Breaches of the Peace. There was a 60% fall in Domestic housebreaking, a 50% fall in Public drinking offences and a 3.5% fall in Petty Assaults. There was a 0.4% fall in Drug supplying; a 1.6% rise in Drug possession but the number of crimes of Drug growing, etc. was up by 533% (32 more crimes). Acts of Vandalism were down 17%.

Hamilton had nearly a quarter of all recorded crime in 2008-09 at 23%. East Kilbride had an 18.2% share, Rutherglen had 14.5% of all crimes followed by Cambuslang with 8.1%, Larkhall with 7.3%, Blantyre with 6.2% and Lanark with 6.1%. Hamilton accounted for 22.3% of all recorded offences in South Lanarkshire in 2008-09 followed by 17.8% in East Kilbride, 16% in Rutherglen and 7% in Cambuslang, Blantyre accounted for 6.7%, 6.4% in Lanark and 6.1% in Carluke.

In 2008-09, the highest recorded crime rate per 1,000 in South Lanarkshire was in Larkhall at 88 per 1,000. The next highest was in Hamilton at 87 per 1,000, followed by 83.3 in Rutherglen, Cambuslang had a rate of 64.8 per 1,000 and Blantyre and Lanark both had crime rates of 66.1 per 1,000. The lowest rates were in Strathaven at 32 per 1,000, followed by Stonehouse at 33.1 per 1,000 and Bothwell at 35.2 per 1,000. The South Lanarkshire average was 61.8 per 1,000. In 2008-09 the recorded offences rate per 1,000 in South Lanarkshire was 58.1 per 1,000. The highest offences rate was in Rutherglen at 86.6 per 1,000 followed by Hamilton at 79.5 per 1,000, Blantyre at 67.5 per 1,000, Larkhall at 65.9 per 1,000 and Lanark at 65.2 per 1,000. The lowest rates were in Stonehouse at 25.9 per 1,000, Strathaven at 30.3 per 1,000 and Bothwell at 35.2 per 1,000.

Rutherglen, Larkhall, Carluke and Stonehouse were the four areas where levels of both crimes and offences in 2008-09 were higher than in 2004-05. Bothwell, East Kilbride and Clydesdale East were the areas where levels of both crimes & offences were down the most in 2008-09 compared to their 2004-05 levels.

Overall, 28 beats experienced an increase in the number of recorded crimes between 2004-05 and 2008-09. There were 3 beats – Shawfield-Burnhill, Hamilton Town Centre and West Mains - which experienced no change and in 36 beats the number of crimes fell. In terms of Offences, of the 67 police beats in South Lanarkshire a total of 26 experienced rises, one (Low Waters) experienced no change and 40 experienced falls.

Overall Recorded Crime in 2008-09

In 2008-09 there were 37,185 crimes and offences recorded by Strathclyde Police in South Lanarkshire. Of these 19,166 (52.1%) were Crimes and 18,019 (47.9%) were Offences.

Table 1 shows the breakdown of crimes & offences recorded in South Lanarkshire in 2009-09 by main crime group.

As this table shows, the largest single group of crimes & offences committed in South Lanarkshire in 2008-09 were Miscellaneous Offences (Breaches of the Peace, Public drinking, Race crime, etc.). There were 12,223 such offences recorded – 32.9% of the total. Next came Crimes of Dishonesty (Housebreaking, shoplifting, etc.) with 7,562 (20.3%) and then Acts of Vandalism, malicious mischief, fire raising, etc with 6,272 such crimes recorded (16.9% of all crimes and offences). Motoring offences were the next largest category with 5,796 offences (15.6%).

The smallest numbers of crimes recorded in 2008-09 were of acts of Indecency at 208 (or 0.6% of the total) and Crimes of Non-sexual Violence at 698 (1.9% of the total).

During 2008-09 a total of 8,226 Crimes were cleared up by the police – representing 42.9% of all recorded crimes. In relation to Offences, the police cleared up 15,368 – representing 85.3% of all recorded offences.

Table 1: Recorded crime in South Lanarkshire in 2008-09

2008-09	Number of crimes / offences	% of Total
Violent crime (Non-sexual)	698	1.9%
Indecency	208	0.6%
Dishonesty	7,562	20.3%
Vandalism, malicious mischief, etc.	6,272	16.9%
Drugs & Other crimes	4,426	11.9%
Total Crimes	19,166	51.5%
Miscellaneous offences	12,223	32.9%
Motoring offences	5,796	15.6%
Total Offences	18,019	48.5%
All Crimes & Offences	37,185	100%

Overall in 2008-09 there were 64.6 crimes per 1,000 residents in South Lanarkshire and 59.4 offences per 1,000 residents. Table 2 shows the main crimes & offences calculated on a rate per 1,000 resident basis.

As this table shows, Miscellaneous offences had the highest rate of crimes per 1,000 – with 39.8 recorded offences per 1,000 residents in South Lanarkshire in 2008-09. Next came Crimes of Dishonesty at 24.4 per 1,000 and then Vandalism, etc. at 20.2 per 1,000.

There were only 0.7 crimes of Indecency per 1,000 residents in South Lanarkshire and only 2.3 Violent crimes per 1,000 people in 2008-09.

Table 2: Crimes & Offences per 1,000 residents in 2008-09

Crime / Offence	Rate per 1,000
Violent crime (Non-sexual)	2.3
Indecency	0.7
Dishonesty	24.4
Vandalism, malicious mischief, etc.	20.2
Drugs & Other crimes	14.3
Total Crimes	61.8
Miscellaneous offences	39.4
Motoring offences	18.7
Total Offences	58.1

Specific Crimes & Offences in 2008-09

Table 3 shows the number of recorded incidents, their share of the All Crime or Offences figure and the incidence rate per 1,000 residents for ten specific crimes & offences in 2008-09. Between them, these ten individual crimes & offences accounted for 53.6% of all Crimes & Offences recorded in South Lanarkshire.

The largest number was for Acts of Vandalism, with 5,806 recorded offences. Next came Breaches of the Peace, 5,158, followed by Petty Assaults at 3,632 and then Drug possession at 1,923. The smallest numbers of crimes recorded were of Littering, with 54 recorded offences and crimes of Aggravated Racial Conduct at 177.

In terms of crime rates per 1,000 resident population, there were 18.7 Acts of Vandalism per 1,000 residents, followed by 16.6 per 1,000 Breaches of the Peace and 11.7 per 1,000 of Petty Assault. There were 6.2 per 1,000 for Possession of Drugs and 5.9 per 1,000 for Drinking in a Public place.

The lowest rates were for Littering at 0.2 per 1,000, followed by crimes involving Aggravated Racial Conduct at 0.6 per 1,000.

Table 3: Specific Crimes & Offences in South Lanarkshire in 2008-09

Specific crime	Numbers	% of all crimes & offences	Rate Per 1,000 residents
Domestic Housebreaking	672	1.8%	2.2
Vandalism	5,806	15.6%	18.7
Drug supplying	256	0.7%	0.8
Drug possession	1,923	5.2%	6.2
Breach of the Peace	5,158	13.9%	16.6
Public urination	413	1.1%	1.3
Aggravated Racial Conduct	177	0.5%	0.6
Littering	54	0.1%	0.2
Petty assault	3,632	9.8%	11.7
Public drinking	1,828	4.9%	5.9

Trends in Recorded Crimes & Offences

This section considers the trends in crimes & offences in South Lanarkshire. It should be noted that in October 2003 the police in South Lanarkshire introduced the new Scottish Crime Recording Standard to record crimes & offences. This makes comparisons with recorded crime data prior to 2004-05 difficult, as the new system leads to a greater recording of certain crimes & offences, in particular acts of vandalism, graffiti, etc., and certain crimes of violence and assault.

It should also be remembered that over the years a number of specific campaigns have been undertaken – both force wide and division wide – targeting particular crimes in certain periods and these will also impact on the figures.

Table 4 shows the total number of Crimes and Offences recorded by the police in South Lanarkshire for every year since 1999-2000.

Table 4: South Lanarkshire recorded crimes & offences

Year	Crimes	Offences	All crimes & offences
1999-2000	20,940	16,761	37,701
2000-2001	19,231	17,997	37,228
2001-2002	18,782	18,944	38,726
2002-2003	19,654	15,969	35,623
2003-2004	19,645	17,291	36,936
2004-2005	20,981	20,429	41,410
2005-2006	20,084	21,257	41,341
2006-2007	20,843	19,968	40,811
2007-2008	19,885	18,282	38,167
2008-2009	19,166	18,019	37,185

As this table shows, there were 19,166 recorded Crimes in South Lanarkshire in 2008-09 – the lowest recorded under the new system and the lowest recorded since - 2001-2002. The figures show a decline of 719, or 3.6% from the 2007-08 level.

The number of Offences in 2008-09 was 18,019 – the lowest since the new recording system was introduced in 2004-05 - and a fall of 263 or 1.4% on the 2007-08 level.

The Detection rate for Crimes in 2008-09 was 42.9%. This was down 0.2 of a percentage point from the figure for 2007-08 and is the 4th highest crime detection rate for South Lanarkshire since 1999-2000.

In relation to the Detection rate for Offences, it was 85.3% in 2008-09. This is the lowest detection rate for offences recorded in South Lanarkshire since 2004-05 when the new recording system was fully introduced.

Figure 1 shows the number of recorded crimes & offences in South Lanarkshire since 1999-2000. As this figure shows, the number of offences has now fallen for three consecutive years after “peaking” in 2005-06 and crimes have now fallen for two consecutive years since 2006-07.

Figure 2 shows the detection rates for Crimes & Offences in South Lanarkshire since 1999-2000. As this figure shows, the Detection rate for Offences has now fallen for eight years in a row to its lowest level ever. The Detection rate for Crimes has fallen but, as the figure shows, the detection rate tends to oscillate.

Figure 1 : South Lanarkshire recorded crimes & offences

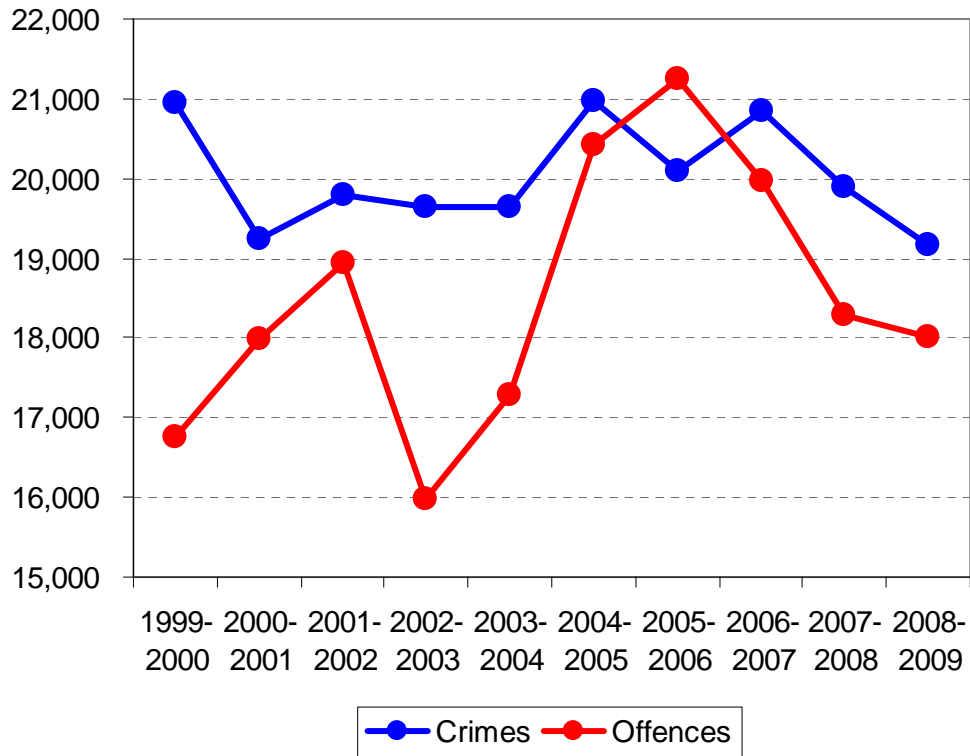


Figure 2: Detection rates for recorded crimes & offences

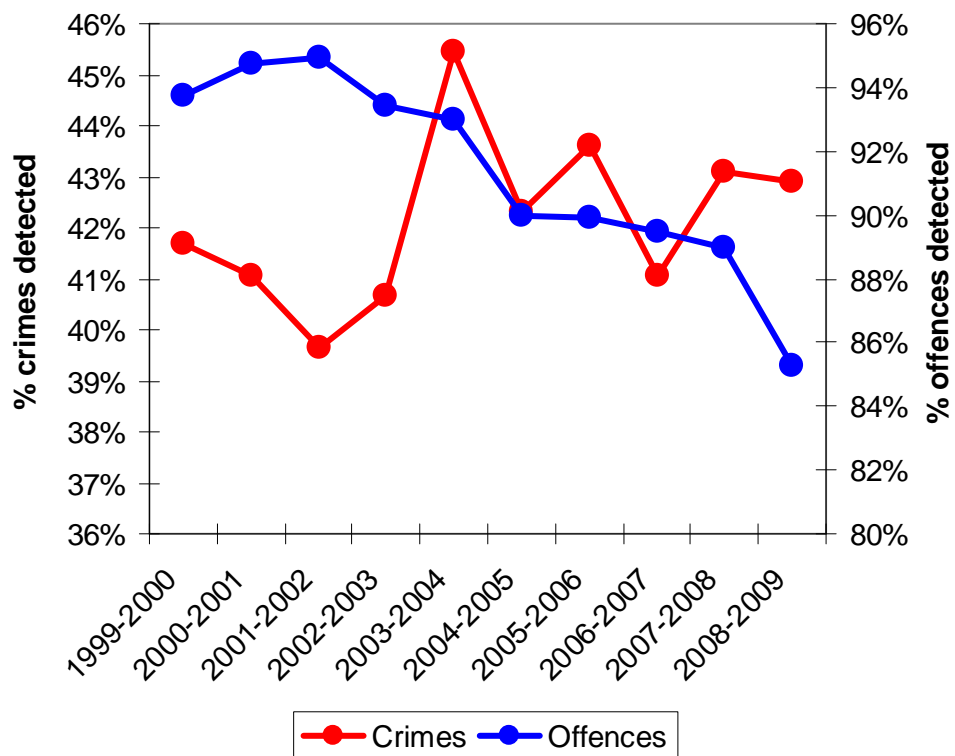


Figure 3 shows the percentage change in individual crimes & offences in South Lanarkshire between 2004-05 and 2008-09.

As this figure shows, comparing 2004-05 with 2008-09 the total number of all Crimes & Offences recorded in South Lanarkshire was down 4,225, or 10.2%. The numbers of Crimes were down by 1,815 or 8.7% and the number of Offences by 2,410, or 11.8%.

Over this period, crimes of Non-sexual Violence were down 744 or 52%. Acts of Vandalism, etc, were down 1,136 or 15% and Crimes of Indecency were down 16 or 7% with crimes of Dishonesty down 564 or 6.9%. The only major crime group to show an increase was Drugs & Other crimes, up 645 or 17%.

In terms of Offences, Miscellaneous offences were down 1,967 or 13.9% over the period and Motoring offences were down 443 or 7.1%.

Although it is not possible to compare the 2008-09 figures with those for years prior to 2004-05 due to the difference in crime recording systems – the numbers of Violent crimes in 2007-08 was the lowest since 1999-2000. Crimes of Indecency were at their highest level since 2004-05 and their 3rd highest level since 1999-2000. Drug & Other Crime levels were at their 2nd highest level recorded. Acts of Vandalism & Fire raising were at their lowest level since 2004-05. The number of Miscellaneous offences figure was the lowest since the new system began and these figures have now fallen each year since 2005-06.

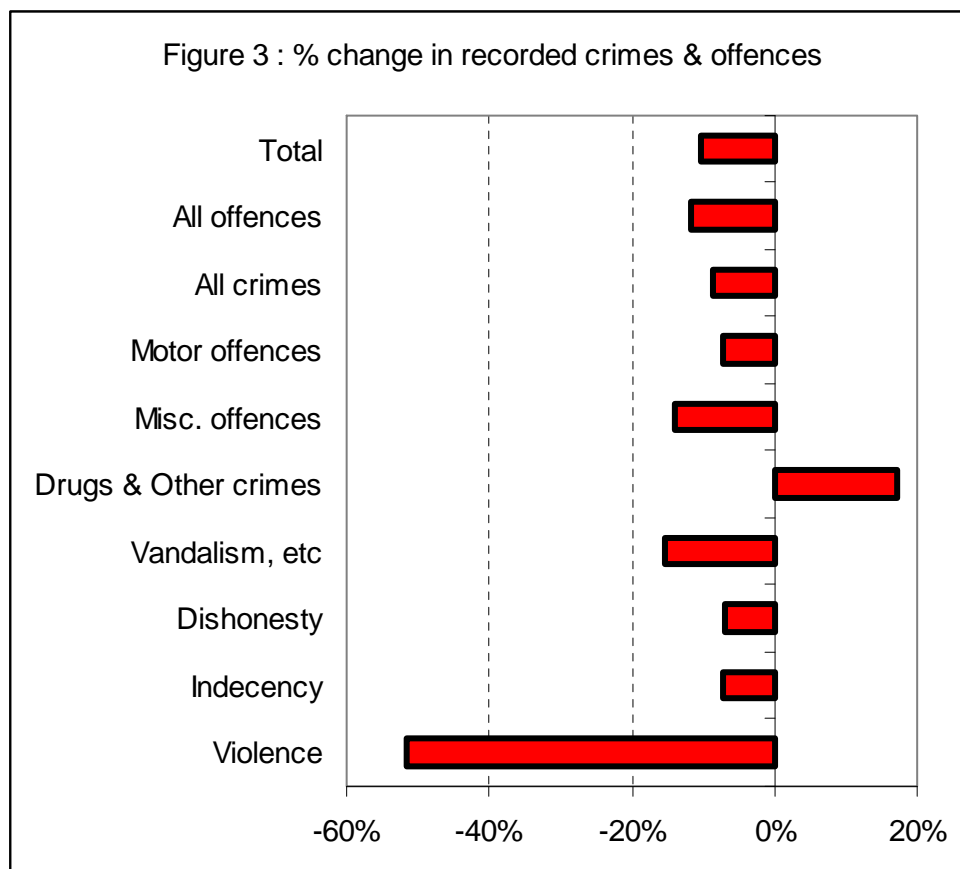


Figure 4 shows the percentage change in individual crimes & offences in South Lanarkshire between 2007-08 and 2008-09. As this figure shows, over the year the overall the number of all Crimes & Offences recorded in South Lanarkshire was down 982, or 2.6%. The number of Crimes was down by 719 or 3.6% and the number of Offences by 263 or 1.4%.

Over the year Acts of Vandalism, etc were down 850 or 11.9%, with crimes of Non-sexual Violence down 32 or 4.4%. The number of recorded Drugs & other crimes was also down, by 156 or 3.4%. However Crimes of Indecency were up 39 or 23% and crimes of Dishonesty were up 282 or 3.9%.

In terms of Offences, Miscellaneous offences were down 719 or 3.6% over the year and Motoring offences were up 61 or 1.1%

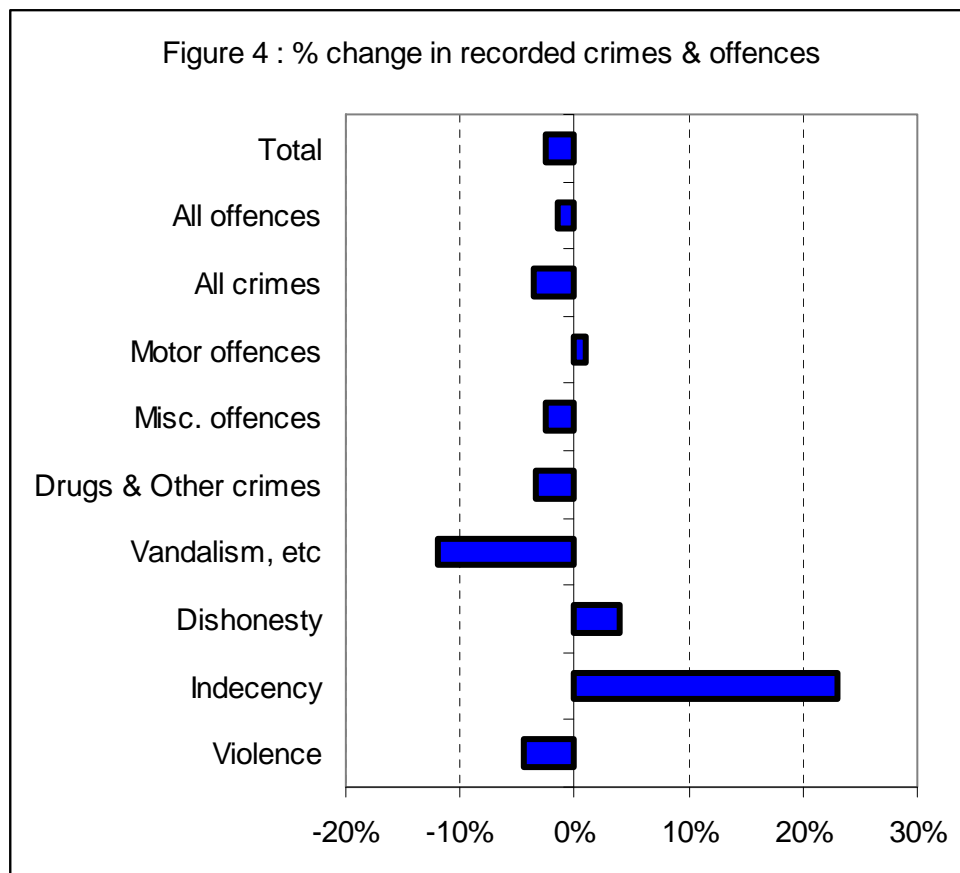


Table 5 shows the absolute and percentage change in a number of specific crimes & offences in South Lanarkshire in 2008-09 compared to 2004-05 and 2007-08.

As this table shows, between 2004-05 and 2008-09, there was a 44% rise in Racially Aggravated Conduct and a 6% rise in the number of Breaches of the Peace. All the other Crimes and Offences show falls – ranging from a 60% fall in Domestic housebreaking and a 50% fall in Public drinking offences to a 0.4% fall in Drug supplying and a 3.5% fall in Petty assaults. Although not shown in the table, the number of crimes of Drug growing, etc. was up 32 or 533% over this period.

Between 2007-08 and 2008-09, for these selected crimes, there was a 5% rise in the number of Racially Aggravated Conduct offences recorded, a 4.4% rise in Petty assaults and just over a 1% rise in Drug possessions and Breaches of the Peace. There was a 43% fall in the number of Public urination offences recorded as well as a 38% fall in Drug supplying and a 28% fall in the number of Violent, non-sexual crimes and a 27% fall in Littering. The number of crimes of Drug growing, etc. was up over the year by 22 or 137% in South Lanarkshire.

Table 5: Change in selected crimes & offences 2008-09 on 2004-05 and 2007-08

Crime / Offence	Change on 2004-05		Change on 2007-08	
	Numbers	%	Numbers	%
Domestic housebreaking	-994	-59.7%	-265	-28.3%
Vandalism	-1,196	-17.1%	-876	-13.1%
Drugs supplying	-1	-0.4%	-158	-38.2%
Drug possession	-365	-16.0%	31	1.6%
Breach of the Peace	291	6.0%	70	1.4%
Urinating	-70	-14.5%	-316	-43.3%
Racially Aggravated Conduct	54	43.9%	8	4.7%
Littering	-37	-40.7%	-20	-27.0%
Petty assault	-131	-3.5%	154	4.4%
Public drinking	-1,820	-49.9%	-832	-31.3%

Overall Crimes & Offences by Area 2008-09

Table 6 shows the recorded crimes & offences at the level of 14 'community areas' across South Lanarkshire and Table 7 shows the percentage of South Lanarkshire crimes and offences recorded in each area and the proportion of an area's crimes & offences which were crimes.

Table 6: Crimes & offences in 2008-09 within South Lanarkshire

Community	Number of Crimes	Number of Offences	All Crimes & Offences
East Kilbride	3,489	3,205	6,930
Strathaven	357	338	687
Hamilton	4,403	4,021	584
Blantyre	1,191	1,216	647
Bothwell	232	232	2,418
Larkhall	1,399	1,047	9,271
Stonehouse	279	218	2,185
Uddingston	304	281	542
Carluke	993	1,107	2,060
Clydesdale East	599	673	1,516
Lanark	1,176	1,160	2,596
Lesmahagow	431	381	927
Rutherglen	2,777	2,887	5,300
Cambuslang	1,545	1,253	2,504
South Lanarkshire	19,175	18,019	37,914

In 2008-09, Hamilton had the largest number of **Crimes**, at 4,403, followed by East Kilbride with 3,489, Rutherglen with 2,777 and Cambuslang with 1,545, Larkhall had 1,399 crimes, Blantyre 1,191 and Lanark 1,176. The smallest numbers were in Bothwell at 232, Stonehouse with 279 and Uddingston at 304.

Hamilton had nearly a quarter of all recorded crime in 2008-09 at 23%. East Kilbride had an 18.2% share, Rutherglen had 14.5% of all crimes followed by Cambuslang with 8.1%, Larkhall with 7.3%, Blantyre with 6.2% and Lanark with 6.1%.

Hamilton had 4,021 of all recorded **Offences** in South Lanarkshire in 2008-09, followed by 3,205 in East Kilbride, 2,887 in Rutherglen, 1,253 in Cambuslang, 1,216 in Blantyre and 1,160 in Lanark. There were 218 in Stonehouse, 232 offences in Bothwell and 281 in Uddingston.

Hamilton accounted for 22.3% of all offences in South Lanarkshire in 2008-09 followed by 17.8% in East Kilbride, 16% in Rutherglen and 7% in Cambuslang, Blantyre accounted for 6.7%, 6.4% in Lanark and 6.1% in Carluke.

Table 7: Share of South Lanarkshire recorded crimes & offences 2008-09

Community	Number of Crimes	Number of Offences	% Total being Crimes
East Kilbride	18.2%	17.8%	52.1%
Strathaven	1.9%	1.9%	51.4%
Hamilton	23.0%	22.3%	52.3%
Blantyre	6.2%	6.7%	49.5%
Bothwell	1.2%	1.3%	50.0%
Larkhall	7.3%	5.8%	57.2%
Stonehouse	1.5%	1.2%	56.1%
Uddingston	1.6%	1.6%	52.0%
Carluku	5.2%	6.1%	47.3%
Clydesdale East	3.1%	3.7%	47.1%
Lanark	6.1%	6.4%	50.3%
Lesmahagow	2.2%	2.1%	53.1%
Rutherglen	14.5%	16.0%	49.0%
Cambuslang	8.1%	7.0%	55.2%
South Lanarkshire	100%	100%	51.6%

In terms of the make up of recorded crimes and offences, in South Lanarkshire in 2008-09, 51.6% were recorded crimes. In seven communities, crimes accounted for a higher proportion of all crimes & offences than the South Lanarkshire average. In Larkhall 57% of all crimes & offences were crimes, as were 56% in Stonehouse, 55% in Cambuslang and 53% in Lesmahagow. In Carluku and Clydesdale East only 47% of all crimes & offences were crimes.

Table 8 shows the number of recorded crime and offences on a per 1,000 residents basis in 2008-09.

In 2008-09, the highest **recorded crime rate** per 1,000 in South Lanarkshire was in Larkhall at 88 per 1,000. The next highest were in Hamilton at 87 per 1,000, followed by 83.3 in Rutherglen. Cambuslang had a rate of 64.8 per 1,000 and Blantyre and Lanark both had crime rates of 66.1 per 1,000. The lowest rates were in Strathaven

at 32 per 1,000, followed by Stonehouse at 33.1 per 1,000 and Bothwell at 35.2 per 1,000. The South Lanarkshire average was 61.8 per 1,000.

Table 8: Crimes & Offences in 2008-09 on a per 1,000 basis

2008-09	Crimes Per 1,000	Offences Per 1,000	Relative Crime Rate	Relative Offences Rate
East Kilbride	46.0	42.2	74%	73%
Strathaven	32.0	30.3	52%	52%
Hamilton	87.0	79.5	141%	137%
Blantyre	66.1	67.5	107%	116%
Bothwell	35.2	35.2	57%	61%
Larkhall	88.0	65.9	142%	113%
Stonehouse	33.1	25.9	54%	45%
Uddingston	52.8	48.8	85%	84%
Carluke	50.1	55.8	81%	96%
Clydesdale East	41.8	46.9	68%	81%
Lanark	66.1	65.2	107%	112%
Lesmahagow	49.8	44.0	81%	76%
Rutherglen	83.3	86.6	135%	149%
Cambuslang	64.8	52.6	105%	90%
South Lanarkshire	61.8	58.1	100%	100%

In 2008-09, the **recorded offences rate** per 1,000 in South Lanarkshire was 58.1 per 1,000. The highest offences rate was in Rutherglen at 86.6 per 1,000 followed by Hamilton at 79.5 per 1,000, Blantyre at 67.5 per 1,000, Larkhall at 65.9 per 1,000 and Lanark at 65.2 per 1,000. The lowest incidence rates were in Stonehouse at 25.9 per 1,000, Strathaven at 30.3 per 1,000 and Bothwell at 35.2 per 1,000.

Table 9 shows the recorded crimes and offences detection rates for 2008-09.

Table 9: Detection rate of Crimes & Offences in 2008-09

2008-09	Crimes Detection rate	Offences Detection rate
East Kilbride	42.2%	84.1%
Strathaven	31.4%	83.7%
Hamilton	50.3%	87.0%
Blantyre	39.6%	85.0%
Bothwell	28.9%	89.7%
Larkhall	35.2%	86.1%
Stonehouse	34.8%	85.3%
Uddingston	27.6%	85.1%
Carluke	41.7%	90.2%
Clydesdale East	31.9%	90.6%
Lanark	45.1%	92.3%
Lesmahagow	46.2%	84.5%
Rutherglen	45.5%	76.6%
Cambuslang	39.7%	88.6%
South Lanarkshire	40.2%	89.5%

In 2008-09, 40.2% of all recorded crime was detected in South Lanarkshire. The highest community **crime detection rate** was in Hamilton at 50.3%. The next highest were in Lesmahagow at 46.2%, 45.5% in Rutherglen and 45.1% in Lanark. The lowest crime detection rates were in Uddingston at 27.6%, Bothwell at 28.9%, Strathaven at 31.4% and Clydesdale East at 31.9%.

The overall **offences detection rate** in 2008-09 in South Lanarkshire was 89.5%. The highest rate was in Lanark at 92.3%. In Clydesdale East the figure was 90.6%, followed by Carluke at 90.2% and Bothwell at 89.7%. The lowest offences detection rates were in Rutherglen at 76.6%, Strathaven at 83.7%, East Kilbride at 84.1% and Lesmahagow at 84.5%.

Incidences of Crimes & Offences by Area 2008-09

This section looks at the numbers of recorded crimes per 1,000 residents by broad crime group in each community area in 2008-09.

In relation to the incidence of the main crime groups, in terms of **Violent (non-sexual) crime** in 2008-09, the highest incidences were in Larkhall, Rutherglen, Hamilton and Blantyre. In the case of Larkhall, the incidence of violent crime was over three-quarters higher than the council average of 2.3 per 1,000 at 4.1 per 1,000. In Rutherglen, the rate at 3.8 per 1,000 was over two-thirds higher than the average. The Hamilton rate was 60% higher and the rate in Blantyre was over a third higher. In both Strathaven and Lanark, the rate of Violent non-sexual crime was less than half the South Lanarkshire average in 2008-09.

In relation to **crimes of Indecency**, the highest incidence rates were in Larkhall and Uddingston at 1.2 per 1,000 – nearly four-fifths higher than the South Lanarkshire average in 2008-09. The rate in Rutherglen at 0.9 per 1,000 was over a third higher. The rate in Cambuslang was only a fifth of the South Lanarkshire average at 0.1 per 1,000 with the rate in Lesmahagow being just over a third of the average.

In 2007-08, the incidence of crimes of **Dishonesty** was close to 50% higher in Larkhall and Hamilton (at 36 and 35 per 1,000) and nearly a fifth higher in Lanark at 29 per 1,000. The incidence rate in Stonehouse and Strathaven was the lowest in South Lanarkshire at 14.2 per 1,000 and 15.3 per 1,000 – at less than two-thirds of the average of 24.4 per 1,000.

The incidence of **Vandalism** in South Lanarkshire was 19.9 per 1,000. The highest rate was in Larkhall at 31.1 per 1,000 (nearly 50% higher) followed by Rutherglen at 27.9 per 1,000 (two fifths higher) and Blantyre at 26.6 per 1,000 (a third higher). The lowest rates were in Stonehouse at 14.2 per 1,000 and 15.3 per 1,000 for Strathaven – less than two-thirds of the South Lanarkshire average.

The highest incidence of **Drugs & Other crimes** was in Rutherglen – nearly three-quarters higher than the South Lanarkshire average – at 25.1 per 1,000 compared to the South Lanarkshire of 14.3 per 1,000. The next highest rate was in Hamilton at 24.1 per 1,000 (over two-thirds higher) and in Lanark (a quarter higher at 17.8 per 1,000). The lowest incidence of this type of crime occurred in Strathaven and Stonehouse – around a quarter of the South Lanarkshire average at 3.7 per 1,000 and 3.9 per 1,000 respectively.

The **Miscellaneous offences** rate was 50% higher than the average in Hamilton in 2008-09 at 59.3 per 1,000 compared with the South Lanarkshire average of 39.4 per 1,000. At 53.9 per 1,000 the rate in Rutherglen was nearly two-fifths higher and at 48.4 per 1,000 the rate was nearly 25% higher in Blantyre. In Bothwell and Stonehouse the rates were less than half the South Lanarkshire average, at 16.7 per 1,000 and 19.3 per 1,000 respectively.

The incidence of **Motoring offences** was 18.7 per 1,000 in South Lanarkshire as a whole in 2008-09. The rate was three-quarters higher in Rutherglen at 32.7 per 1,000, with the next highest rate being 29.8 per 1,000 in Lanark – over 50% higher – and Carluke had the next highest rate at 23.8 per 1,000 – over a quarter higher. The lowest rates were in Stonehouse and Strathaven at less than half the average, with rates of 6.5 per 1,000 and 7.4 per 1,000 respectively.

Trends in Crimes & Offences by Community since 2004-05

Between 2004-05 and 2008-09 all crimes & offences fell by 4,216 or 10.2%. The number of Crimes fell by 1,806 or -8.6% whilst the number of Offences fell by -2,410 or 11.8%.

Table 10 shows the percentage change in All Crimes, Offences and both Crimes & Offences at a community area level between 2004-05 and 2008-09.

Table 10: % change in Crimes & Offences 2008-09 on 2004-05

Community	Crimes	Offences	Crimes & Offences
East Kilbride	-15.8%	-25.5%	-20.7%
Strathaven	-14.2%	-50.4%	-36.6%
Hamilton	-6.3%	-15.8%	-11.1%
Blantyre	-26.1%	-14.1%	-20.5%
Bothwell	-42.6%	-31.0%	-37.3%
Larkhall	12.5%	5.5%	9.4%
Stonehouse	21.3%	1.4%	11.7%
Uddingston	-10.3%	-5.7%	-8.2%
Carluke	2.3%	9.6%	6.0%
Clydesdale East	-24.0%	-25.5%	-24.8%
Lanark	-7.8%	-22.9%	-16.0%
Lesmahagow	9.4%	-28.2%	-12.2%
Rutherglen	1.2%	29.6%	13.9%
Cambuslang	-10.3%	1.2%	-5.5%
South Lanarkshire	-8.6%	-11.8%	-10.2%

As this table shows, in terms of All Crimes & Offences four communities had higher numbers in 2008-09 than in 2004-05. Rutherglen had the largest increase – of 13.9% followed by Stonehouse with an 11.7% rise, Larkhall, up 9.4% and Carluke up 6%. All the other ten communities had fewer, with the number of all crimes & offences being down 37.3% in Bothwell, 36.6% in Strathaven, 24.8% in Clydesdale East and 20.7% down in East Kilbride.

There were five communities out of fourteen where the numbers of **Recorded Crimes** in 2008-09 were above those for 2004-05. In the case of Stonehouse the increase was 21.3%, in Larkhall it was 12.5% and Lesmahagow experienced a 9.4% increase. Carluke had a 2.3% rise and Rutherglen a 1.2% rise. The largest percentage fall in recorded crime was in Bothwell, down 42.6%. Next came Blantyre with a 26.1% fall, Clydesdale East with a decline of 24% and then East Kilbride with a fall of 15.8%.

In relation to **Recorded Offences**, the number has risen in five communities over the 2004-05 to 2008-09 period and fallen in nine. The largest percentage rises were in Rutherglen, up 29.6%, Carluke, up 9.6%, Larkhall up 5.5% and Stonehouse, up 1.4%. The largest percentage falls in the remaining nine community areas were in Strathaven, down 50.4%, in Bothwell, down 31%, Lesmahagow, down 28.2% and East Kilbride and Clydesdale East, both down 25.5%.

In terms of Detection rates overall, the **detection rate for All crimes & offences** was higher in only three communities – in Cambuslang, Carluke and Bothwell. The largest falls were in Strathaven, Stonehouse and Lesmahagow.

In terms of the **Detection rate for crimes**, there were 6 communities with a higher crime detection rate in 2008-09 than in 2004-05 with the greatest improvements being in Carluke, Cambuslang, Hamilton and East Kilbride. Strathaven, Stonehouse and Blantyre had the largest declines in their crime detection rates between these dates.

For the **Detection rate for offences**, there were four communities where the detection rate was higher in 2008-09 than in 2004-05 – Rutherglen, Carluke, Cambuslang and Larkhall. Of the remaining nine, the largest declines in offences detection rates were in Strathaven, Lesmahagow and Bothwell.

Main Crimes & Offences by Police Beat 2008-09

Table 11 shows the twenty police beats in South Lanarkshire which accounted for the greatest share of crimes and offences recorded by the police in 2008-09. It should be noted that certain crimes & offences can be concentrated in particular locations – in or near licensed premises or shops or public transport sites (taxi ranks, bus stops, etc.). Motoring offences can also be concentrated at particular locations, such as trunk roads or the M74 or particular speeding blackspots. This is the main reason why town centres and some rural and urban locations tend to show concentrations of crimes and offences.

In terms of **Crimes**, the beat covering Hamilton Town Centre was where 5.8% of all crimes were recorded in 2008-09, followed by Carluke Town Centre at 4.24%, Lanark Town Centre at 4.1% and the Whitehill-Burnbank area at 3.35% and the Greenhills area of East Kilbride at 2.95%. The Crossford, Thorntonhall and Crawford-Leadhills beats had the smallest number of crimes recorded in 2008-09.

In relation to **Offences**, 6.95% of all offences recorded by the police in 2008-09 took place in Hamilton Town Centre, followed by 5% in Carluke Town Centre, 4.6% in Lanark Town Centre and 3.8% in Rutherglen-Gallowflat-Clinicarhill. Next came East Kilbride Town Centre at 3.8% and the Whitehill-Burnbank beat with a 3.5% share. The Crossford, Thorntonhall and Quarter beats had the lowest number of offences recorded in South Lanarkshire at a beat level in 2007-08.

Table 11: Recorded crimes & offences in 2008-09 – Police beats

POLICE BEAT	% CRIMES	POLICE BEAT	% OFFENCES
Hamilton Town Centre	5.80%	Hamilton Town Centre	6.95%
Carluke Town Centre	4.24%	Carluke Town Centre	5.01%
Lanark Town Centre	4.10%	Lanark Town Centre	4.56%
Whitehill-Burnbank	3.35%	Rutherglen - Gallowflat – Cl'thill	3.82%
Greenhills	2.95%	East Kilbride Town Centre	3.77%
Larkhall - Hareleeshill	2.93%	Whitehill-Burnbank	3.50%
Rutherglen - Gallowflat – Cl'rthill	2.86%	Blantyre - West End	3.22%
Westburn - Newton - Hallside	2.81%	Greenhills	2.89%
Larkhall - Strutherhill	2.78%	Hillhouse	2.75%
Hillhouse	2.76%	Larkhall - Hareleeshill	2.59%
East Kilbride Town Centre	2.71%	Shawfield - Burnhill	2.53%
Westwood	2.69%	Westwood	2.47%
Blantyre - West End	2.61%	Cambuslang - Silverbank	2.44%
Cambuslang - Silverbank	2.44%	Calderwood	2.20%
Calderwood	2.43%	Larkhall - Strutherhill	2.20%
Almada Street	2.17%	Westburn - Newton - Hallside	2.15%
Shawfield - Burnhill	2.05%	High Blantyre	2.03%
Fernhill	1.91%	Almada Street	1.97%
Whitlawburn	1.90%	Bankhead - Spittal	1.87%
West Mains	1.89%	High Burnside - Springhall	1.82%

Table 12 shows the rate of All crimes per 1,000 residents in 2008-09 for the twenty police beats with the highest rates.

In 2008-09, the overall South Lanarkshire **incidence of crimes** was 61.8 per 1,000. At a police beat level, the highest rates were for East Kilbride Town Centre, at 720 per 1,000 residents and Hamilton Town Centre at 354 per 1,000. It should be noted that while town centres are areas with large numbers of premises which are main locations for criminal activity, they also have low *resident population* numbers, resulting in high incidence rates. After these two Town Centres, the highest incidence rates per 1,000 residents were in Shawfield-Burnhill at 191 per 1,000, followed by Whitehill-Burnbank at 150 per 1,000 and Rigside at 143 per 1,000.

The lowest All crimes per 1,000 residents rates were in the Landward area of Biggar at 11 per 1,000, followed by Crossford at 14 per 1,000 and the Landward area of Carluke at 15 crimes per 1,000.

Table 12: Incidence per 1,000 of All crimes 2008-09

POLICE BEAT	All Crimes per 1,000 residents
East Kilbride Town Centre	720
Hamilton Town Centre	354
Shawfield-Burnhill	191
Whitehill-Burnbank	150
Rigside	143
Almada Street	143
Rutherglen-Gallowflat-Clincarthill	128
Springwells	121
Cambuslang-Silverbank	120
The Village	119
Larkhall-Strutherhill	118
Whitlawburn	114
Lanark Town Centre	111
Larkhall-Fairholm	102
Farme Cross	87
Abington	83
Carluke Town Centre	77
Kirkhill-Vicarland	76
High Burnside-Cathkin-Springhall	76
Udston	76

Table 13 shows the rate of All Offences per 1,000 residents in 2008-09 by police beat for the twenty beats with the highest rates.

In 2008-09, the overall South Lanarkshire **incidence of offences** was 58.1 per 1,000. At a police beat level, the highest figures were for East Kilbride Town Centre, at 943 per 1,000 residents and Hamilton Town Centre at 400 per 1,000. Again it should be noted that while these are areas with large numbers of premises which are main locations for criminal activity, they also have low resident population levels, thus giving them high incidence rates. After these two Town Centres the highest incidence rates per 1,000 residents were in Shawfield-Burnhill at 239 per 1,000, the East Kilbride Village area at 173 per 1,000 and Rutherglen-Gallowflat-Clincarthill at 160 per 1,000.

The lowest rates of All Offences per 1,000 residents were in the Glassford-Chapelton beat at 10 per 1,000, followed by a rate of 12 per 1,000 in the Landward area of Carluke, 15 per 1,000 in Symington and 16 per 1,000 in both the Symington and Quarter beats.

Table 13: Incidence per 1,000 of All Offences 2008-09

POLICE BEAT	All Offences – per 1,000 residents
East Kilbride Town Centre	943
Hamilton Town Centre	400
Shawfield-Burnhill	239
The Village	173
Rutherglen-Gallowflat-Clincarthill	160
Whitehill-Burnbank	147
Almada Street	122
Lanark Town Centre	116
Cambuslang-Silverbank	113
Springwells	94
Whitlawburn	89
Larkhall-Strutherhill	88
Carluke Town Centre	85
Farne Cross	79
Rigside	77
Carstairs	75
High Blantyre	75
Abington	74
High Burnside-Cathkin-Springhall	71
Fernhill	61

Changes in Crimes & Offences by Beat 2004-05 to 2007-08

Table 14 shows the ten beats in South Lanarkshire which experienced the largest percentage increases and declines in both Crimes and Offences over the 2004-05 to 2008-09 period.

Overall, 28 beats experienced an increase in the number of recorded crimes between 2004-05 and 2008-09. There were 3 beats – Shawfield-Burnhill, Hamilton Town Centre and West Mains - which experienced no change and in 36 beats the number of crimes fell.

The largest percentage rises over this period in relation to recorded Crimes were in Thorntonhall, up 220% (11 more crimes) and Quarter up 181% (also up 11). There was a 49% rise in Rigside, a 44.5% rise in Larkhall-Fairholm and a 43.4% rise in both the Farne Cross and Larkhall-Strutherhill beats.

In terms of the largest percentage falls, these were in the Crossford beat, down 63%, the Crawford-Leadhills beat, down 52.9%, Bothwell, down 42.6% Fairhill, down 40.7% and Forth, down 40.2%.

Table 14: Largest percentage rises and declines in Crimes & Offences since 2004-05

Beat – Crime	% change Crimes	Beat – Offences	% change Offences
Thorntonhall	220.0%	Eastfield	98.6%
Quarter	161.5%	Symington	85.7%
Rigside	49.5%	Cambuslang – Silverbank	82.2%
Larkhall - Fairholm	44.5%	Farme Cross	76.7%
Farme Cross	43.4%	Shawfield – Burnhill	42.6%
Larkhall - Strutherhill	43.4%	Westburn - Newton - Hallside	36.6%
Lanark Landward area	41.9%	East Crosshill	36.2%
Coalburn	37.9%	Larkhall – Strutherhill	32.4%
Westburn - Newton - Hallside	36.2%	High Burnside – Springhall	24.2%
The Bent	28.7%	Quarter	21.1%
Blantyre – West End	-32.5%	Abington	-38.2%
Rutherglen-Gallowflat-CI'rthill	-32.7%	Ashgill	-39.2%
Biggar Town Centre	-33.1%	Coalburn	-40.6%
Biggar Landward Area	-34.0%	Laighstonehall	-42.2%
Eastfield	-34.1%	Kirkmuirhill-Blackwood	-43.4%
Forth	-40.2%	Westwood	-44.4%
Fairhill	-40.7%	Fairhill	-44.7%
Bothwell	-42.6%	Glassford-Chapelton	-48.1%
Crawford & Leadhills	-52.9%	Strathaven	-50.8%
Crossford	-63.0%	Crossford	-62.1%

Overall, in terms of Offences, of the 67 police beats in South Lanarkshire, a total of 26 experienced rises, one (low Waters) experienced no change and 40 experienced falls.

The largest percentage increases in Offences between 2004-05 and 2008-09 was in Eastfield, at 98.6%. There was an 86% rise in Offences over this period in Symington, an 82% rise in Cambuslang-Silverbank, with a 77% rise in the Farme Cross area and a 43% rise in Shawfield-Burnhill.

The largest percentage fall was in Crossford, down 62%. The next largest percentage falls were in Strathaven (down 51%), Glassford-Chapelton (down 48%), Fairhill (-45%) and Westwood, down 44%.

Specific Anti-Social Behaviour Crimes & Offences in 2008-09

Table 15 shows figures for selected specific recorded anti-social behaviour crimes & offences. In 2008-09 there were 17,096 crimes & offences in this grouping. Of these, 34% (5,806) were acts of Vandalism, 30% were Breaches of the Peace (5,158), followed by 21% being Petty Assaults (3,632) and 11% being Public Drinking (1,828).

Overall, the rate of these forms of Anti-Social Behaviour in 2008-09 in South Lanarkshire was 55.1 per 1,000 resident population. This varied from a figure of 18.7

per 1,000 for acts of Vandalism and 16.6 per 1,000 for Breaches of the Peace, to 11.7 per 1,000 for Petty Assault, 5.9 per 1,000 for Public drinking offences, and 2.2 per 1,000 for Domestic housebreaking.

Table 15: Main Anti-Social Behaviour crimes & offences in 2008-09

ASB CRIMES, ETC	Numbers	% Share	PER 1,000
Domestic housebreaking	672	5.0%	2.2
Vandalism	5,806	35.9%	18.7
Breach of the Peace	5,158	26.1%	16.6
Petty Assault	3,632	18.7%	11.7
Public drinking	1,828	14.3%	5.9
Total	17,096	100%	55.1

Table 16 shows the beats which contained the greatest numbers of these Anti-Social Behaviour crimes & offences in 2008-09. The Hamilton Town Centre beat had the largest number at 909 (5.3% of the total). Carluke Town Centre came next with 812 (4.7%) followed by Greenhills with 847 (4.1%), Lanark Town Centre with 642 (3.7%) and Whitehill-Burnbank with 641 (3.7%).

The smallest number of Anti-Social Behaviour crimes & offences were recorded in Crossford with 6, Thorntonhall with 9 and Crawford-Leadhills and Abington with 12 each.

Table 16: Main Anti-Social Behaviour offences and incidences in 2008-09 by beat

BEAT	NUMBERS	BEAT	PER 1000
Hamilton Town Centre	909	East Kilbride Town Centre	723
Carluke Town Centre	812	Hamilton Town Centre	290
Greenhills	696	Whitehill-Burnbank	150
Lanark Town Centre	642	The Village	146
Whitehill-Burnbank	641	Shawfield - Burnhill	121
Blantyre - West End	594	Rutherglen-Gallowflat-CI'rthill	110
Hillhouse	562	Springwells	107
East Kilbride Town Centre	521	Larkhall - Strutherhill	105
Westwood	498	Almada Street	103
Larkhall - Strutherhill	471	Whitlawburn	103
Rutherglen - Gallowflat – CI'rthill	470	Rigside	98
Larkhall - Hareleeshill	467	Lanark Town Centre	91
Calderwood	436	Cambuslang - Silverbank	82
Westburn - Newton - Hallside	425	High Burnside - Springhall	79
Fernhill	383	Fernhill	77
High Burnside - Springhall	366	Carluke Town Centre	77
High Blantyre	348	High Blantyre	71
Shawfield - Burnhill	348	Udston	70
Fairhill	335	Carstairs	64

In relation to the incidence rates of the main forms of police recorded Anti-Social Behaviour in 2008-09, the highest rates were again in East Kilbride and Hamilton Town Centres, at 723 per 1,000 and 290 per 1,000 respectively. The next rates were in Whitehill-Burnbank at 150 per 1,000, followed by The Village in East Kilbride at 146 per 1,000 and Shawfield-Burnhill at 121 per 1,000.

The lowest rates of recorded Anti-Social Behaviour crimes & offences were in the Landward area of Biggar at 5 per 1,000, followed by the Landward area of Carluke at 7 per 1,000 and then Crossford at 8 per 1,000.